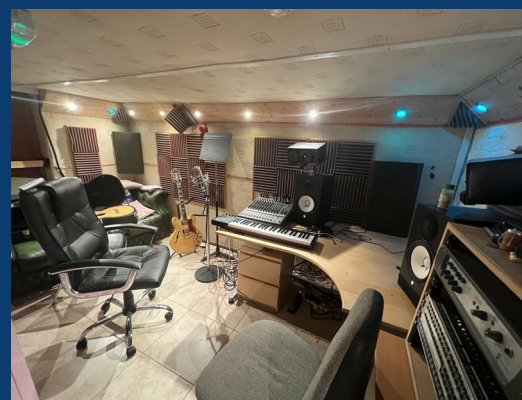
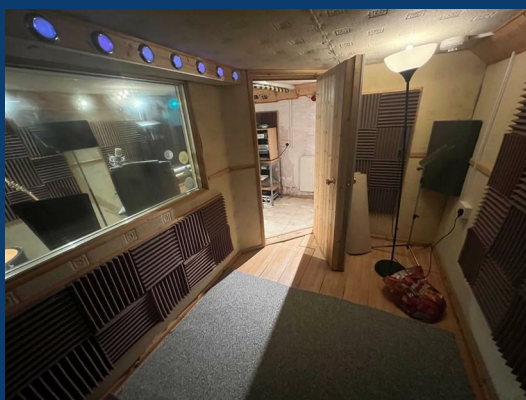




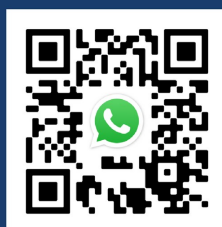
Shaw Heath Stockport



£450 Per month




SEND US A
MESSAGE



SPENCER
HARVEY

PASSIONATE ABOUT PROPERTY



Energy Efficiency Rating		
	Current	Potential
Very energy efficient - lower running costs		
(92 plus) A		
(81-91) B		
(69-80) C		
(55-68) D		
(39-54) E		
(21-38) F		
(1-20) G		
Not energy efficient - higher running costs		
England & Wales		EU Directive 2002/91/EC 

PROPERTY DESCRIPTION

**** AVAILABLE DECEMBER** *ROOM SHARE ACCOMMODATION* *RENT INCLUSIVE OF BILLS***

FIRST floor FURNISHED BEDROOM to rent in this PROFESSIONAL house share accommodation! The property is positioned in a CONVENIENT location within walking distance of Stockport Railway Station suitable for the regular commuter, shops suitable for daily needs and bus routes direct into Stockport, Manchester and beyond are also close at hand. This SPACIOUS shared home has a communal living area, a large galley fitted kitchen complete with appliances, shower room. Externally there is a shared communal yard area.

Viewings come highly recommended to fully appreciate the accommodation on offer. Call TODAY to arrange your viewing. Do NOT miss out.

This property is suitable for one applicant only!

KEY FEATURES

- Available December
- Single bedroom
- Fully furnished
- All bills included

LET AVAILABLE DATE:

12th December 2025

DEPOSIT:£519

MIN TENANCY: Add Text

LET TYPE: Add Text

FURNISH TYPE: Furnished

EPC RATING:

**COUNCIL TAX
BAND:
A**

