



Watermead Close, Stockport,

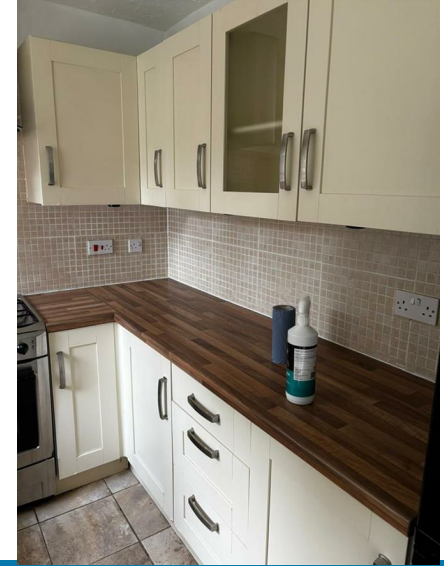
 2 |  1 |  1

£219,000



## Property Details

# Watermead Close, Stockport,



## Key Features

A beautifully presented two double bedroom semi-detached home, perfectly positioned in a popular residential area close to excellent transport links, major motorway networks, and a great range of local amenities just a short drive away.

The accommodation comprises a welcoming entrance hallway with useful storage, leading into a spacious reception room offering plenty of space for both living and dining. To the rear sits a modern fitted kitchen complete with oven, hob, and extractor. Stairs from the reception room lead to the first floor landing, where you'll find two generous double bedrooms, each featuring built-in storage cupboards, and a stylish family bathroom with shower over the bath.

Occupying a desirable corner plot, the property enjoys lawned gardens and benefits from a garage and driveway with ample on-street parking for visitors. An ideal home for first-time buyers or those seeking a well-located, move-in-ready property.

- Beautifully presented two double bedroom semi-detached home
- Situated in a popular residential area close to transport links and local amenities
- Modern fitted kitchen with oven, hob, and extractor
- Corner plot position with lawned gardens



### Kitchen Diner

open plan kitchen diner with door to rear garden

### Living Room

Light bright living room with stairs up to first floor

### Bedroom 1

Principal Bedroom with views to front aspect

### Bedroom 2

Double bedroom with views to the rear aspect

### Bathroom

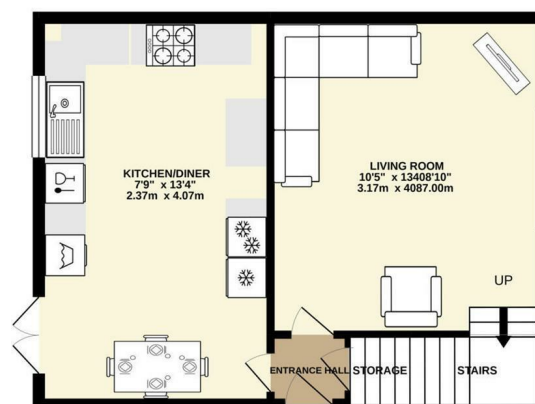
3 piece white suite with shower over bath



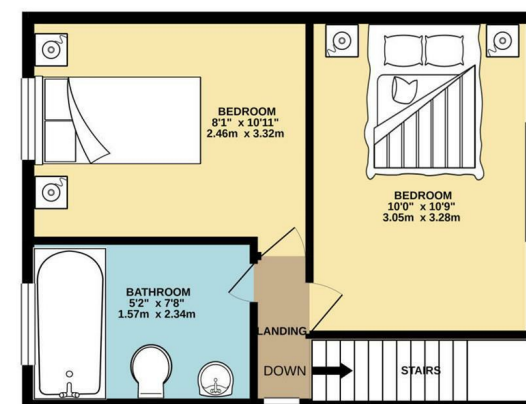
At Spencer Harvey, we are delighted to say that we are independent estate agents, which means that we will put your needs first at all times. If you want to learn more about why we are amongst the fastest growing independent estate agents in Manchester, please get in touch to arrange an appointment.



GROUND FLOOR  
455 sq.ft. (42.2 sq.m.) approx.



1ST FLOOR  
455 sq.ft. (42.2 sq.m.) approx.



TOTAL FLOOR AREA: 909 sq.ft. (84.5 sq.m.) approx.

Whilst every attempt has been made to ensure the accuracy of the floorplan contained here, measurements of doors, windows, rooms and any other items are approximate and no responsibility is taken for any error, omission or mis-statement. This plan is for illustrative purposes only and should be used as such by any prospective purchaser. The services, systems and appliances shown have not been tested and no guarantee as to their operability or efficiency can be given.  
Made with Metroplan ©2020



## Contact Us

 137 Shaw Heath Stockport

 0161 480 8888

 Sales@spencerharvey.co.uk

www.spencerharvey.co.uk

OR SEND US A  
MESSAGE



COUNCIL TAX BAND:

B

TENURE:

EPC RATING:

C

LOCAL AUTHORITY:

Stockport