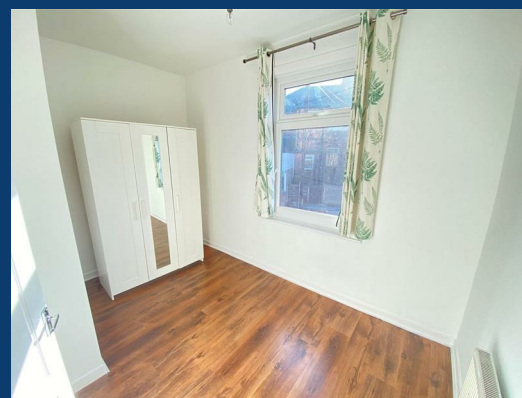




Gorsey Mount Street

Stockport



£1,050 Per month

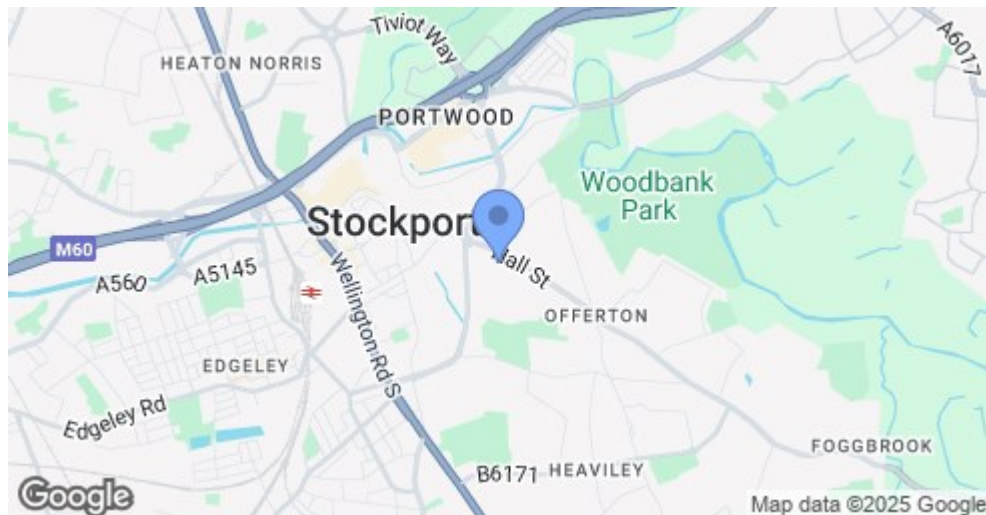
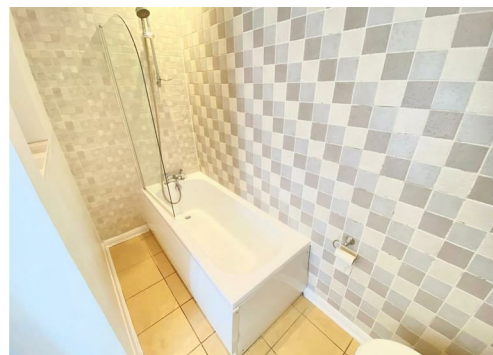
2 | 1 | 2

SEND US A
MESSAGE



SPENCER
HARVEY

PASSIONATE ABOUT PROPERTY



Energy Efficiency Rating		
	Current	Potential
Very energy efficient - lower running costs		
(92 plus) A		
(81-91) B		87
(69-80) C		
(55-68) D	68	
(39-54) E		
(21-38) F		
(1-20) G		
Not energy efficient - higher running costs		
England & Wales	EU Directive 2002/91/EC	

PROPERTY DESCRIPTION

Available November , Two double bedroom property.

This well presented spacious two bedroom , mid-terraced property, benefits from a Great Location, close to Woodbank park, Stockport city centre, M60 and A6. This property would best suit a young professional couple.

The property greets you with bright, spacious living room, generous and galley kitchen located to the rear of the property. On the first floor you will find a master double bedroom,

Generously sized second bedroom and modern three piece suite. To the rear of the property you will find low maintenance yard. There is on street parking available.

KEY FEATURES

- Available November
- Sought After Location
- Private Garden
- Two reception rooms
- Modern Décor
- Central location

LET AVAILABLE DATE:

7th November 2025

DEPOSIT:£1,211

MIN TENANCY: Add Text

LET TYPE: Add Text

FURNISH TYPE: Unfurnished

EPC RATING:

D

COUNCIL TAX

BAND:

A

