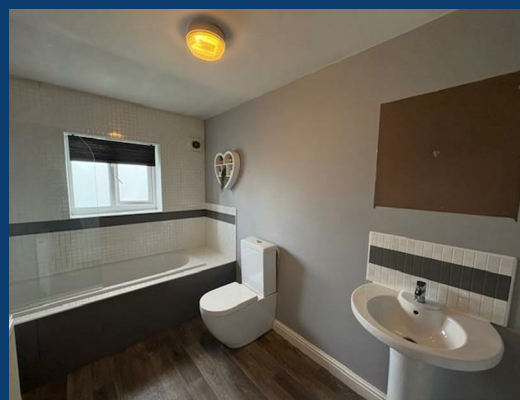
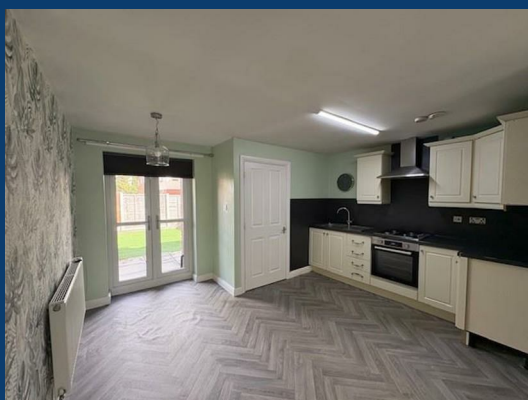




# Louisa Mews

*Denton*



£245,000

4 | 2 | 1

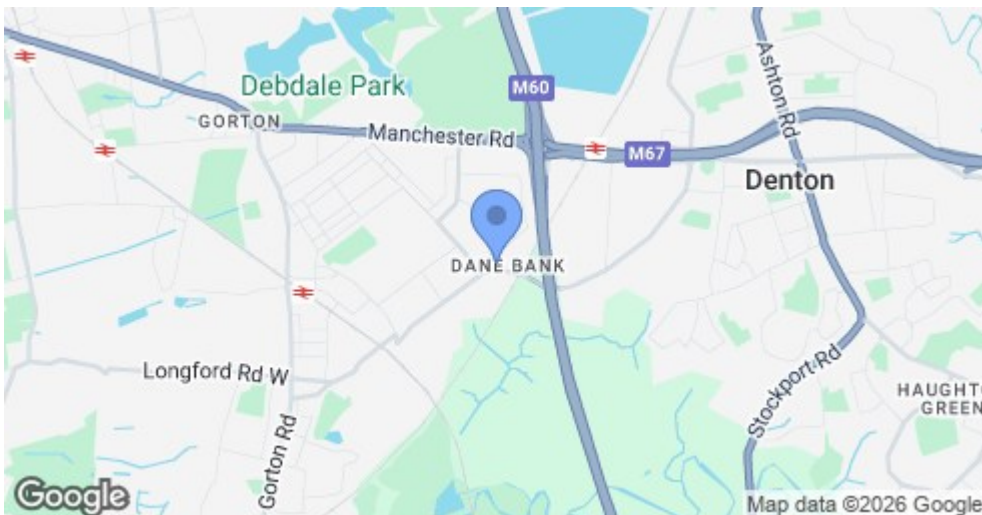
SEND US A  
MESSAGE



**SPENCER  
HARVEY**

PASSIONATE ABOUT PROPERTY





Energy Efficiency Rating		
	Current	Potential
Very energy efficient - lower running costs		
(92 plus) <b>A</b>		
(81-91) <b>B</b>		
(69-80) <b>C</b>		
(55-68) <b>D</b>		
(39-54) <b>E</b>		
(21-38) <b>F</b>		
(1-20) <b>G</b>		
Not energy efficient - higher running costs		
<b>England &amp; Wales</b>	EU Directive 2002/91/EC	

## PROPERTY DESCRIPTION

### Stunning 4-Bedroom Modern Mews Home – Dane Bank

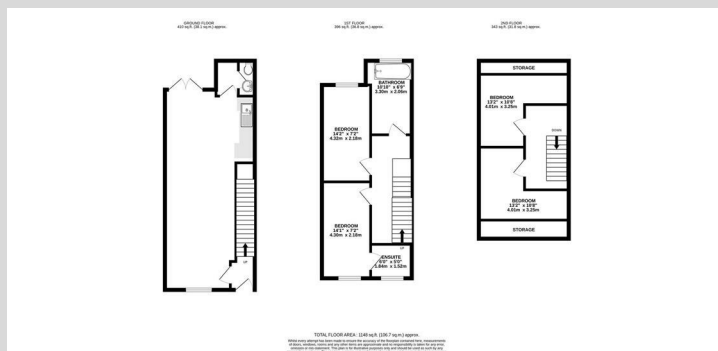
Situated in the ever-popular Dane Bank area, this well presented four-bedroom home offers stylish, versatile living set across three spacious floors. The property boasts a bright open-plan living, dining and kitchen area, complete with modern fittings and patio doors leading directly onto the rear garden, which is mainly laid to lawn – perfect for families and entertaining. A separate utility room and downstairs W.C. add further practicality. Upstairs, the home continues to impress with a generously sized main bedroom featuring a private en-suite, along with three further bedrooms and a modern family bathroom.

Externally, the garden provides a safe and sunny retreat, ideal for children or those who enjoy outdoor living.

With its contemporary layout, spacious accommodation, and sought-after location close to schools, transport links, and local amenities, this property is perfect for growing families or professionals alike.

## KEY FEATURES

- Fantastic Dane Bank Location
- 4 Double Bedrooms
- 2 Bathrooms
- Downstairs WC
- Utility Room
- Open plan Living
- 2 Off Road allocated parking spaces
- Enclosed Rear Garden



EPC RATING:  
**C**

COUNCIL TAX  
BAND:  
**C**

