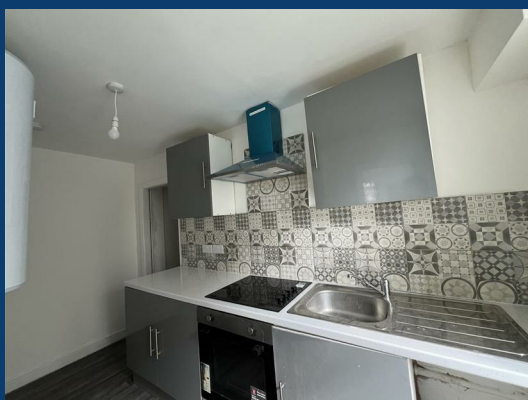
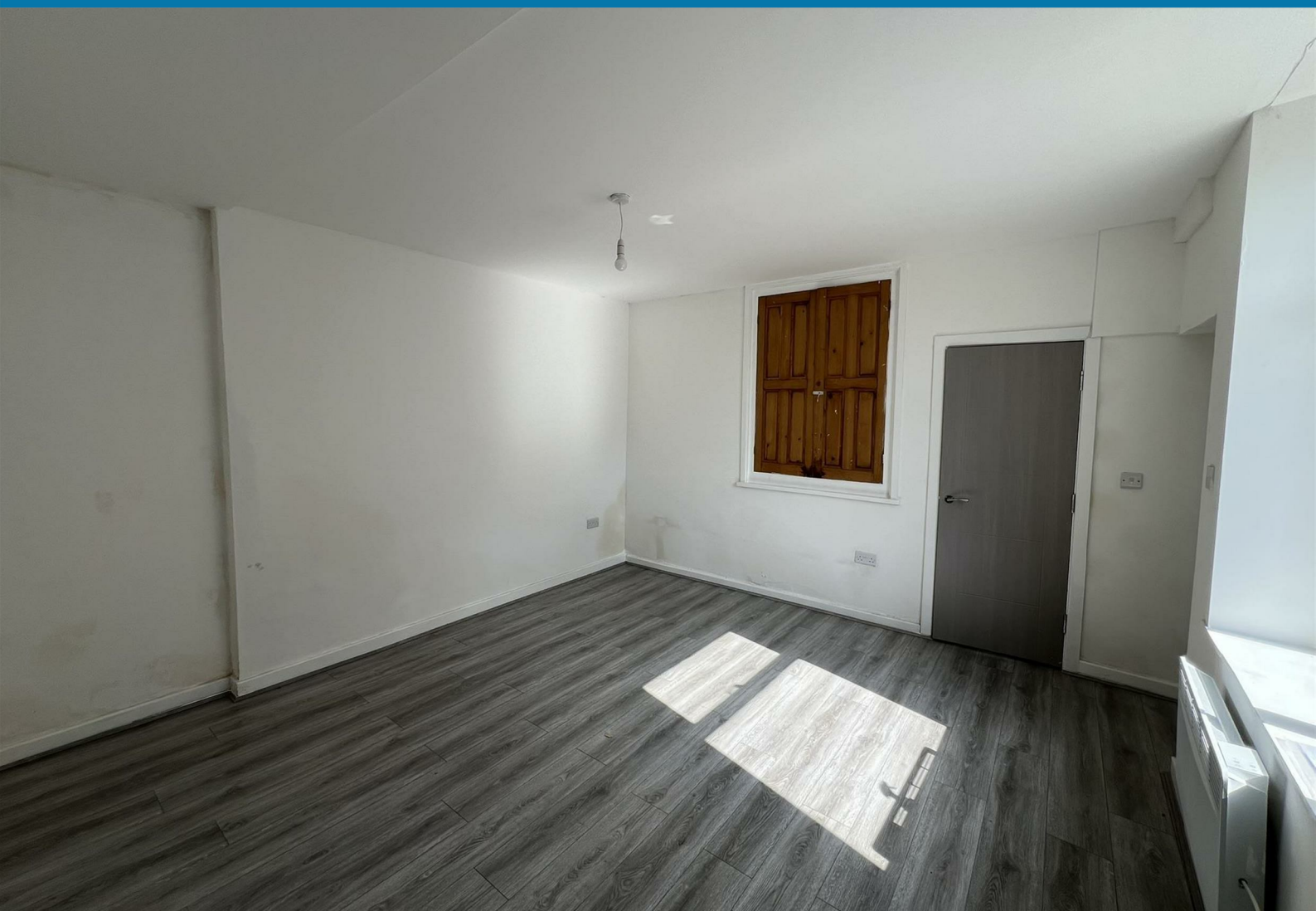




Meadow Street

Hyde



£975 Per month

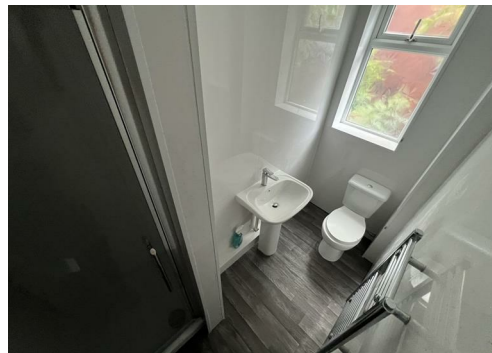
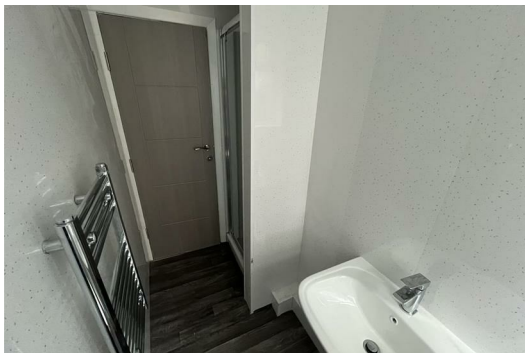
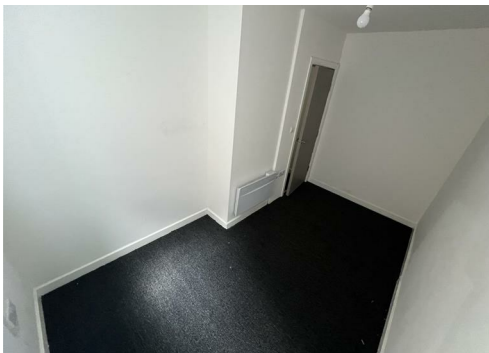
2 | 1 | 1


SEND US A
MESSAGE



SPENCER
HARVEY

PASSIONATE ABOUT PROPERTY



Energy Efficiency Rating		
	Current	Potential
Very energy efficient - lower running costs		
(92 plus) A		
(81-91) B		
(69-80) C		
(55-68) D		
(39-54) E		
(21-38) F		
(1-20) G		
Not energy efficient - higher running costs		
England & Wales	EU Directive 2002/91/EC 	

PROPERTY DESCRIPTION

Recently Renovated 2-Bedroom Flat – Hyde, Tameside | Available Now

Located in a convenient part of Hyde, this recently refurbished 2-bedroom flat offers a clean and practical living space, ideal for professionals, couples, or small families looking for an affordable home with good local connections.

The flat has been freshly painted throughout, with new flooring and a simple, modern finish. The living room is bright and comfortable, and the separate kitchen includes updated units with space for appliances.

There are two good-sized bedrooms and a newly fitted bathroom with a shower over the bath and modern tiling.

Situated close to Hyde town centre, transport links, and local amenities, this flat is offered unfurnished and is available now. White goods NOT included. On-street parking available nearby.

Early viewing recommended.

KEY FEATURES

- 2 bed
- Available Now
- Ideal Location
- Great for commuters
- Recently redecorated

LET AVAILABLE DATE:

16th June 2025

DEPOSIT:£1,125

MIN TENANCY: Add Text

LET TYPE: Add Text

FURNISH TYPE: Unfurnished

EPC RATING:

COUNCIL TAX

BAND:

B

