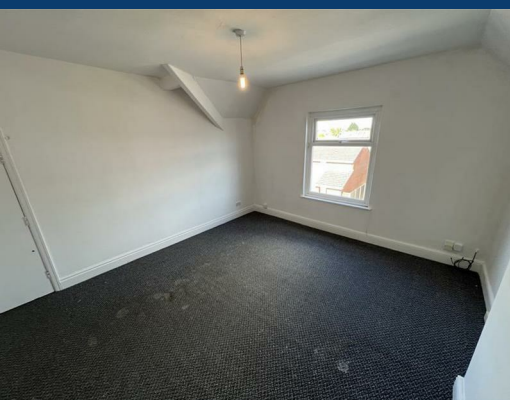




Shaw Heath

Stockport



£750 Per month

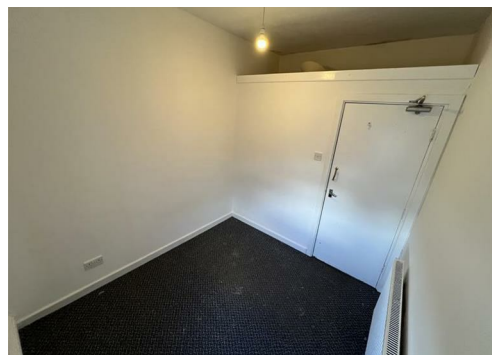


SEND US A
MESSAGE



SPENCER
HARVEY

PASSIONATE ABOUT PROPERTY



Energy Efficiency Rating		
	Current	Potential
Very energy efficient - lower running costs		
(92 plus) A		
(81-91) B		
(69-80) C		
(55-68) D		
(39-54) E		
(21-38) F		
(1-20) G		
Not energy efficient - higher running costs		
England & Wales		EU Directive 2002/91/EC

PROPERTY DESCRIPTION

Spacious Top-Floor 1-Bedroom Apartment to Rent in Shaw Heath – Ideal for Commuters

Available to rent, this spacious top-floor one-bedroom apartment is located in the sought-after Shaw Heath area – a great option for commuters or a young professional. The property benefits from excellent transport links, local shops and amenities, garage access, and is close to the green open space of Cale Green Park.

Inside, the apartment offers a generous living space, with a welcoming entrance hallway, a bright and roomy living room, a well-proportioned double bedroom, and a modern bathroom fitted with a white three-piece suite including a bath with electric shower, toilet, and wash basin.

The separate fitted kitchen includes an electric oven, four-ring hob, and fridge-freezer.

?? Contact us today to arrange a viewing – this well-located top-floor flat is expected to let quickly!

KEY FEATURES

- Available Now
- Spacious Top floor apartment
- Ideal location
- White goods included

LET AVAILABLE DATE:

3rd June 2025

DEPOSIT: £865

MIN TENANCY: Add Text

LET TYPE: Add Text

FURNISH TYPE: Unfurnished

EPC RATING:

COUNCIL TAX

BAND:

A

