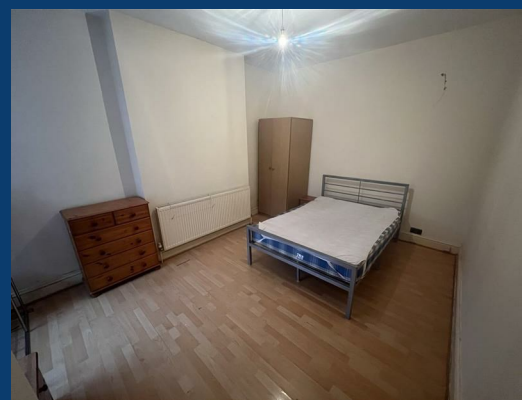




# Kennerley Road

## Stockport



£900 Per month



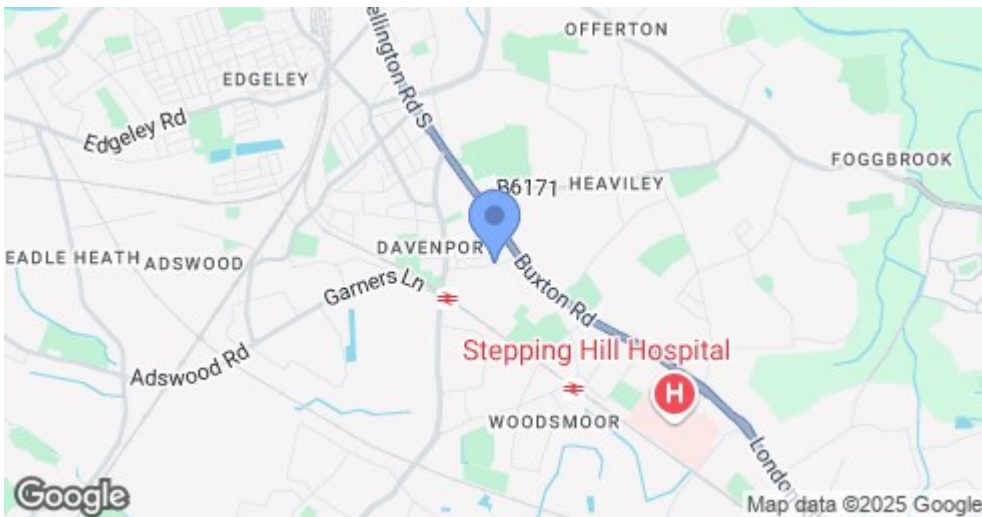
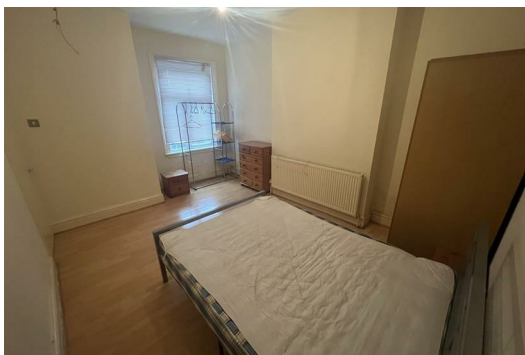
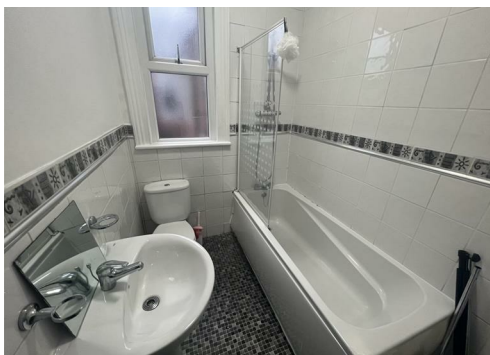
SEND US A  
MESSAGE



SPENCER  
HARVEY

PASSIONATE ABOUT PROPERTY





Energy Efficiency Rating		
	Current	Potential
Very energy efficient - lower running costs		
(92 plus) A		
(81-91) B		
(69-80) C		
(55-68) D	61	75
(39-54) E		
(21-38) F		
(1-20) G		
Not energy efficient - higher running costs		
England & Wales		EU Directive 2002/91/EC

## PROPERTY DESCRIPTION

This perfectly located one bedroom first floor flat is located in the heart of Davenport close to many local amenities and walking distance to Davenport Train Station.

The property comprises of a large, bay fronted reception room with high ceilings, a large double bedroom, a decent sized kitchen and a modern three piece bathroom suite . There is also a large shared garden to the rear of the property.

Ideal for a young professional looking for accommodation with great transport links.

The property won't be on the market long so call today to book in a viewing!

### KEY FEATURES

- Available June
- First Floor apartment

### LET AVAILABLE DATE:

30th June 2025

**DEPOSIT:** £1,038

**MIN TENANCY:** Add Text

**LET TYPE:** Add Text

**FURNISH TYPE:** Part furnished

**EPC RATING:**

D

**COUNCIL TAX**

**BAND:**

A

