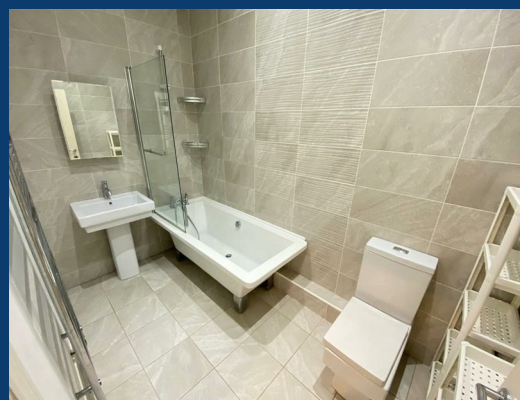
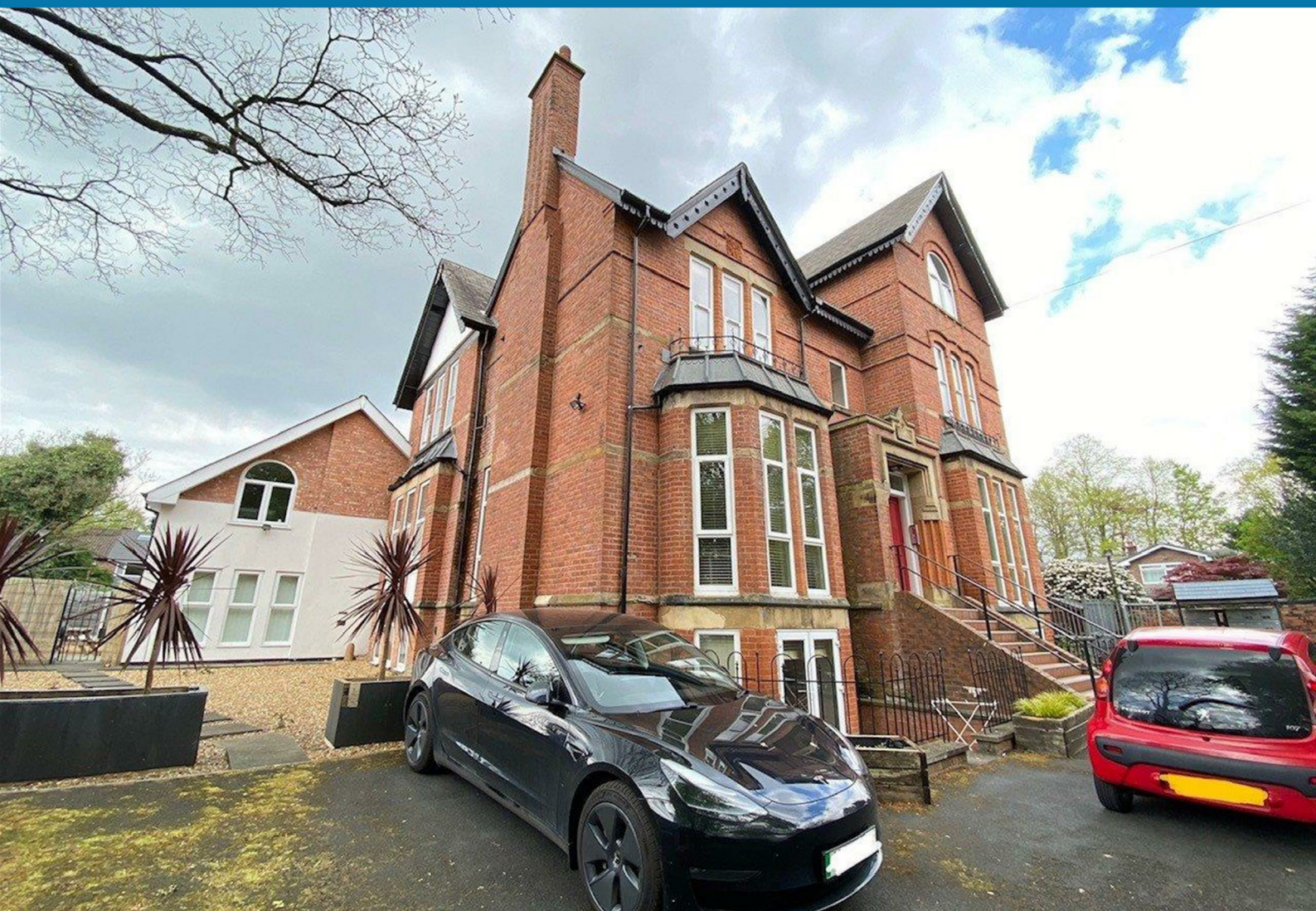




27 Cavendish Road

Manchester



£1,100 Per month

2 | 1 | 1


SEND US A
MESSAGE



SPENCER
HARVEY

PASSIONATE ABOUT PROPERTY



Energy Efficiency Rating		
	Current	Potential
Very energy efficient - lower running costs		
(92 plus) A		
(81-91) B		
(69-80) C		
(55-68) D		
(39-54) E		
(21-38) F		
(1-20) G		
Not energy efficient - higher running costs		
England & Wales	EU Directive 2002/91/EC 	

PROPERTY DESCRIPTION

Cavendish House is a beautiful development sat in Ellesmere Park, the converted period building now houses a bunch of lovely apartments. Apartment 12 is a beauty and is split over two floors (over the 2nd and 3rd floor) internally it offers you a bright, great space with a good sized open plan living room / modern kitchen, two nicely sized double bedrooms and an up to date bathroom.

As mentioned earlier, you are based in Ellesmere Park which if you don't already know is a hugely sought after location, nearby you have a whole host of amenities in the ever popular and vibrant Monton Village and Eccles Town Centre, along with numerous transport links including the tram, train and several bus routes close by.

KEY FEATURES

- Available End May
- Duplex
- Ideal location
- Communal Car Park

LET AVAILABLE DATE:

30th May 2025

DEPOSIT: £1,269

MIN TENANCY: Add Text

LET TYPE: Add Text

FURNISH TYPE: Unfurnished

EPC RATING:

**COUNCIL TAX
BAND:
B**

