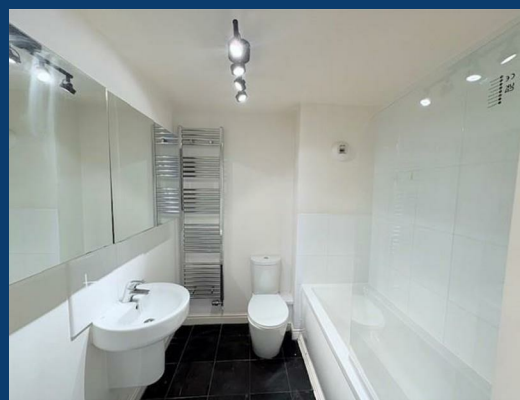




Cooper Court

Stockport



£175,000

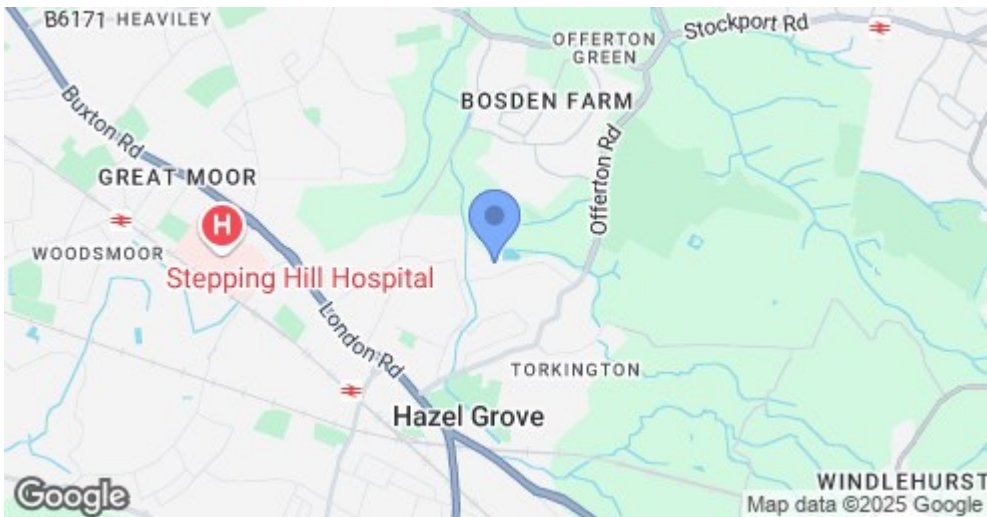
2 | 2 | 1

SEND US A
MESSAGE



SPENCER
HARVEY

PASSIONATE ABOUT PROPERTY



Energy Efficiency Rating

	Current	Potential
Very energy efficient - lower running costs		
(92 plus) A		
(81-91) B		
(69-80) C		
(55-68) D		
(39-54) E		
(21-38) F		
(1-20) G		
Not energy efficient - higher running costs		
England & Wales	EU Directive 2002/91/EC	

PROPERTY DESCRIPTION

Superb First Floor Apartment with Stunning Views-Turnkey and Ready to Move In.

Welcome to this well presented two bedroom, two bathroom, first-floor apartment, offering a perfect blend of style, space and convenience. Situated in Hazel Grove, close to the hospital and excellent transport links, this light filled home is ideal for first-time buyers, downsizers or investors alike.

With an open-plan kitchen, dining and living area, designed for modern living and entertaining. Large windows flood the space with natural light, creating a warm and inviting atmosphere while offering lovely views.

Both double bedrooms are generously sized, with the master benefiting from an en-suite shower room for added comfort. A further family bathroom completes this great home.

Contact us today to book a viewing.

KEY FEATURES

- Well presented Two Bed Two Bath Apartment
- Open Plan Kitchen, Dining, Living Room
- En-Suite Shower Room
- Close to Local Amenities
- Close to Local Transport Links
- Lovely Views
- Allocated Parking



EPC RATING:
C

COUNCIL TAX
BAND:
B

