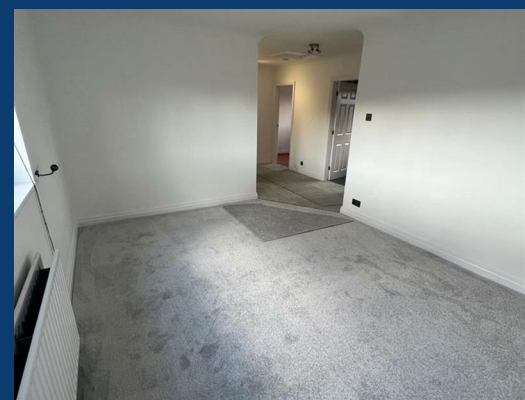
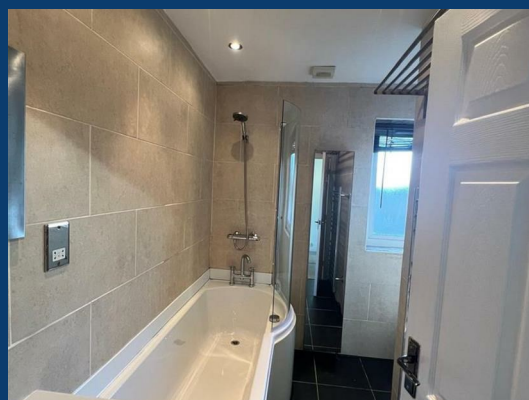




# Firwood Close

Stockport



£155,000

2 | 1 | 1

SEND US A MESSAGE




**SPENCER HARVEY**

PASSIONATE ABOUT PROPERTY





Energy Efficiency Rating		Current	Potential
Very energy efficient - lower running costs			
(92 plus) A			
(81-91) B			
(69-80) C		75	75
(55-68) D			
(39-54) E			
(21-38) F			
(1-20) G			
Not energy efficient - higher running costs			
<b>England &amp; Wales</b>		EU Directive 2002/91/EC 	

## PROPERTY DESCRIPTION

Ready-to-Move-Into, First Floor, 2-Bed Apartment in a Peaceful Cul-de-Sac

Located in a quiet cul-de-sac in a popular neighbourhood, this delightful, purpose-built, first floor, 2-bedroom apartment has been recently decorated and carpeted throughout so is ready to move into. With its own private entrance downstairs and accommodation on the first floor the property feels more like a home than an apartment.

Inside, you'll find well proportioned rooms with fresh, tasteful décor and brand-new carpets underfoot, creating a warm and stylish atmosphere.

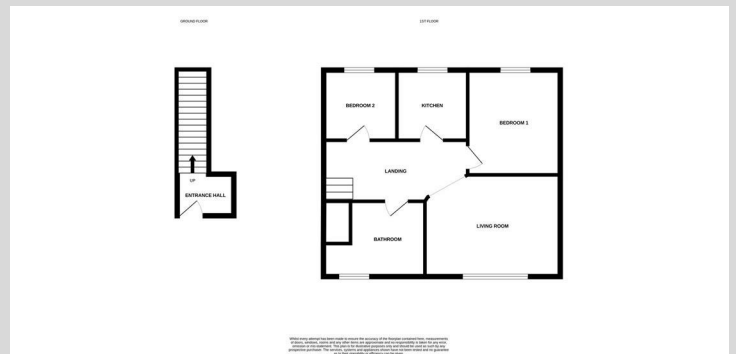
A highlight is the pleasant outlook over communal gardens, offering a sense of greenery and calm.

The exterior of the property also benefits from 2 designated car parking spaces conveniently close to the front door. The very good energy rating is supported by replacement windows and a central heating boiler all installed within the last 6 years.

Ideal for first-time buyers or downsizers seeking a low-maintenance lifestyle, this charming apartment combines a peaceful setting with convenient access to local amenities. Don't miss this gem.

## KEY FEATURES

- Peaceful Cul-de-Sac
- Own private entrance
- 2 designated car parking



EPC RATING:  
C

COUNCIL TAX  
BAND:  
B

