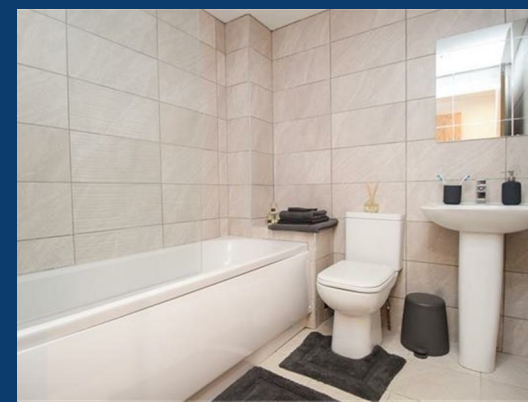




St Mary's Court

Stockport



£800 Per month




SEND US A MESSAGE



SPENCER HARVEY
PASSIONATE ABOUT PROPERTY



Energy Efficiency Rating		
	Current	Potential
Very energy efficient - lower running costs		
(92 plus) A		
(81-91) B		
(69-80) C		
(55-68) D		
(39-54) E		
(21-38) F		
(1-20) G		
Not energy efficient - higher running costs		
England & Wales	EU Directive 2002/91/EC 	

PROPERTY DESCRIPTION

Unfurnished! Available September!

This stunning one double bedroom apartment in this modern apartment block.

Set over four floors, this luxury accommodation manages to combine a sense of traditional style with modern day living, making this a fantastic opportunity for people looking for the best of both worlds in Stockport.

These beautiful apartments are absolutely unique, set in a listed building within a conservation area right in the heart of the town centre. This area is a superb residential location with stunning local architecture, in what has become a quirky shopping centre, with an abundance of one off shops, and just a few strides from the historic town market (Foodie Friday is a must from this distance!)

KEY FEATURES

- White goods included
- Available September
- Second Floor

LET AVAILABLE DATE:
4th September 2024
DEPOSIT: £923
MIN TENANCY: Add Text
LET TYPE: Add Text
FURNISH TYPE: Unfurnished

EPC RATING:

COUNCIL TAX BAND:
A