



Shaw Road South, Stockport,

 2 |  1 |  2

£215,000



Shaw Road South, Stockport,

Property Details

Welcome to this charming terraced house located on Shaw Road South in Stockport! This lovely property boasts two reception rooms, perfect for entertaining guests or simply relaxing with your loved ones. With two cosy bedrooms, there's plenty of space for a small family or for those who enjoy having a guest room or a home office. The house features a well presented bathroom, ensuring your comfort and convenience. The traditional terraced style of this property adds character and a sense of community, making it a wonderful place to call home.

Located in Stockport, you'll have easy access to local amenities, schools, and transport links, making daily life a breeze. Whether you're looking to settle down or invest in a property with great potential, this terraced house on Shaw Road South is definitely worth considering.

Key Features

- TWO bedrooms
- TWO reception rooms
- Useful basement area
- UPVC double glazing
- Gas central heating system
- Viewing highly recommended !!

Lounge

3.72m x 3.45m

Radiator, UPVC double glazed window, feature fire surround.

Dining Room

3.74m into recess x 3.60m

UPVC double glazed window, radiator.

Kitchen

2.08m x 3.56m

Attractive range of wall and base units, work surfaces, single drainer sink unit with mixer tap. Two UPVC double glazed windows, radiator, door to outside.

Basement

3.78m x 3.48m

Gas and electric meters.

First Floor Landing

Bedroom 1

3.77m into recess x 2.59m

Two UPVC double glazed windows, radiator, cupboard housing gas central heating boiler.

Bedroom 2

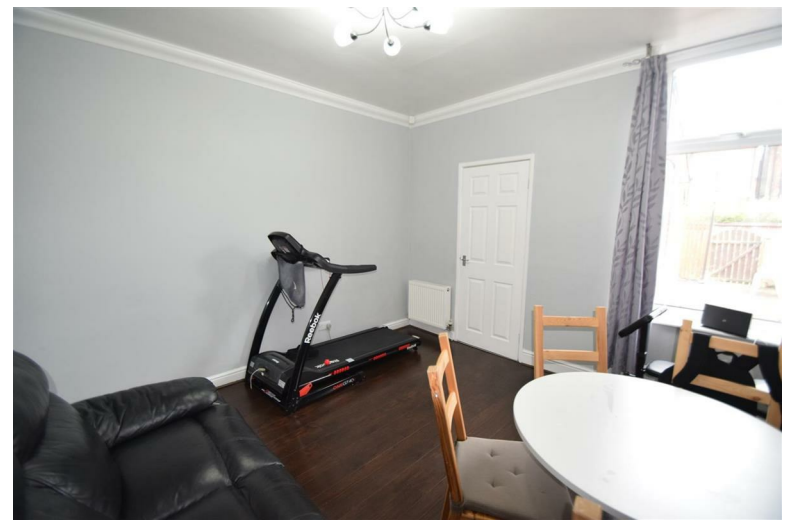
2.77m x 2.46m

UPVC double glazed window, radiator.

Bathroom

1.79m x 1.73m

Comprising: w.c., wash hand basin, bath with over head shower.



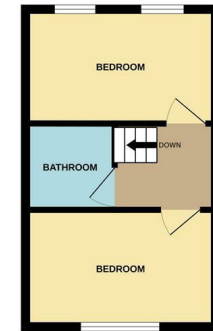
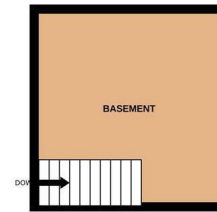
At Spencer Harvey, we are delighted to say that we are independent estate agents, which means that we will put your needs first at all times. If you want to learn more about why we are amongst the fastest growing independent estate agents in Manchester, please get in touch to arrange an appointment.



BASEMENT

GROUND FLOOR

1ST FLOOR



Whilst every attempt has been made to ensure the accuracy of the floorplan contained here, measurements of doors, windows, rooms and any other levels are approximate and no responsibility is taken for any error, omission or mis-statement. This plan is for illustrative purposes only and should be used as such by any prospective purchaser. The services, systems and appliances shown have not been tested and no guarantee as to their operability or efficiency can be given.
Made with Metropix ©2024



Contact Us

 137 Shaw Heath Stockport

 0161 480 8888

 Sales@spencerharvey.co.uk

www.spencerharvey.co.uk

OR SEND US A
MESSAGE



COUNCIL TAX BAND:

A

TENURE:

Leasehold

EPC RATING:

D

LOCAL AUTHORITY:

Stockport