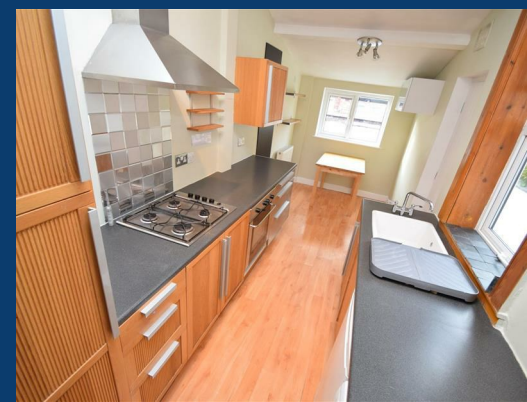
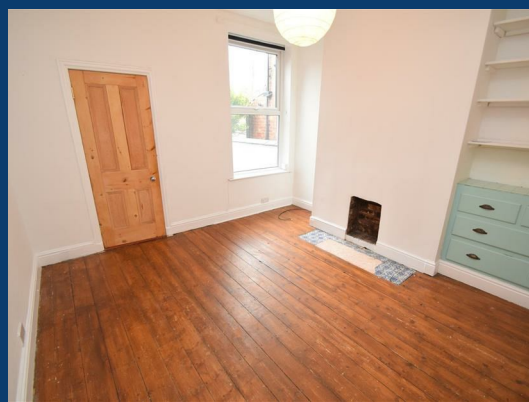




Adelaide Road

Stockport



£1,050 Per annum

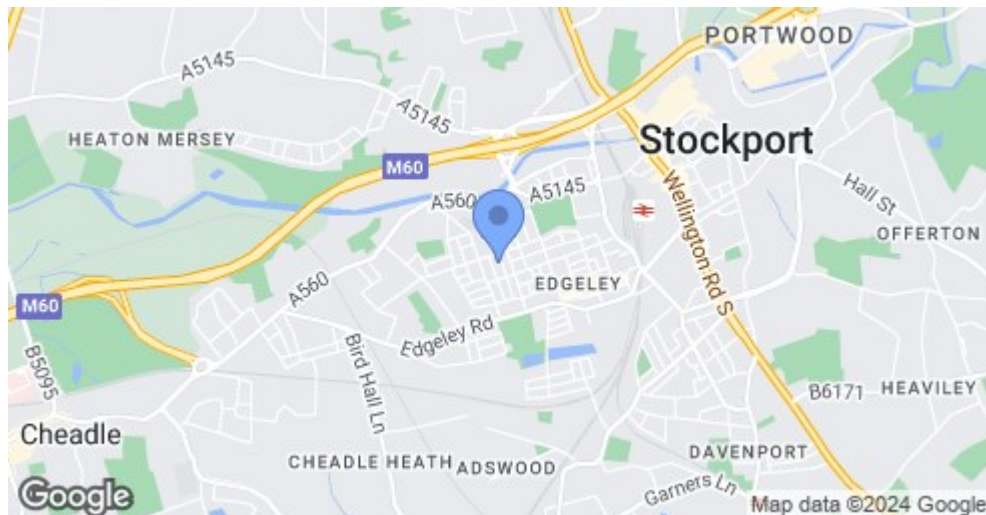
2 | 1 | 2


SEND US A MESSAGE



SPENCER HARVEY

PASSIONATE ABOUT PROPERTY



Energy Efficiency Rating		Current	Potential
Very energy efficient - lower running costs			
(92 plus)	A		
(81-91)	B		
(69-80)	C		
(55-68)	D	60	76
(39-54)	E		
(21-38)	F		
(1-20)	G		
Not energy efficient - higher running costs			
England & Wales		EU Directive 2002/91/EC 	

PROPERTY DESCRIPTION

AVAILALBE AUGUST****ORIGINAL WOODEN FLOORING THROUGHOUT** **MODERN FIXTURES AND FITTINGS**

Two bedroom mid terrace house located in the heart of Edgely.

This well presented property offers a lounge with wood flooring and iron fire place which leads to the well proportioned dining room which allows access into the cellar, an excellent storage point.

The modern fitted kitchen houses beech units with a electric oven and gas hob, washing machine & fridge. To the first floor there is a master bedroom with wooden floors and built in storage and a feature fireplace, LARGE SINGLE bedroom and a bathroom offers a three piece white suite with a main wires shower. To the rear of the property is a courtyard.

KEY FEATURES

- Avaiable August
- 2 Reception rooms
- Unfurnished
- Sought after location

LET AVAILABLE DATE:

11th August 2023

DEPOSIT:£1,211

MIN TENANCY: Add Text

LET TYPE: Add Text

FURNISH TYPE: Unfurnished

EPC RATING:

D

COUNCIL TAX

BAND:

B

