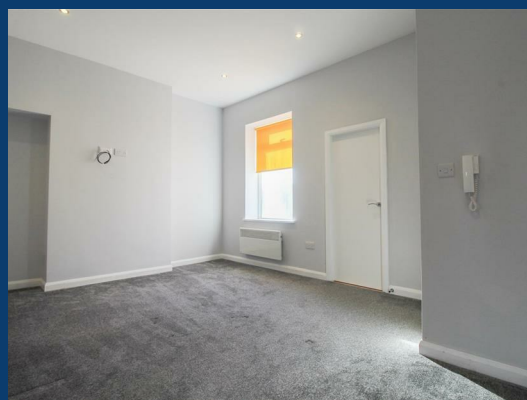




Buxton Road

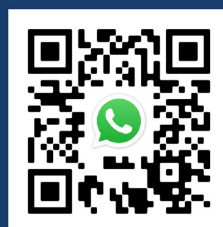
Stockport



£800 Per month



SEND US A MESSAGE



SPENCER HARVEY

PASSIONATE ABOUT PROPERTY



Energy Efficiency Rating		Current	Potential
Very energy efficient - lower running costs			
(92 plus) A			
(81-91) B			
(69-80) C			69
(55-68) D		45	
(39-54) E			
(21-38) F			
(1-20) G			
Not energy efficient - higher running costs			
England & Wales		EU Directive 2002/91/EC	

PROPERTY DESCRIPTION

**** AVAILABLE NOW *** ONE BEDROOM APARTMENT ****

This beautifully presented first floor ONE BEDROOM apartment is located just a short walking distance from Woodsmoor train station (commute to Manchester City Centre within 20 minutes). On your doorstep you will find Hazel Grove's great selection of shops and Stepping Hill hospital. The property itself is on the main road A6 and benefits from great transport links.

This property is ideally suited to a young professional or a young professional couple.

The apartment greets you with a fantastic open living space; to your right you will find fully fitted modern kitchen. To your left you will find a storage cupboard, modern three piece bathroom and a very good size DOUBLE BEDROOM. Externally there is low maintenance courtyard which is shared with one other apartment.

EPC Rating E

KEY FEATURES

- Stepping Hill Hospital
- Woodsmoor train station
- EPC E
- Council Tax A
- Local shops
- Great transport links
- A6
- Ideal for a young professional
- Part Furnished

LET AVAILABLE DATE:
20th February 2024
DEPOSIT: £923
MIN TENANCY: Add Text
LET TYPE: Add Text
FURNISH TYPE: Unfurnished

EPC RATING:
E

COUNCIL TAX
BAND:
A

