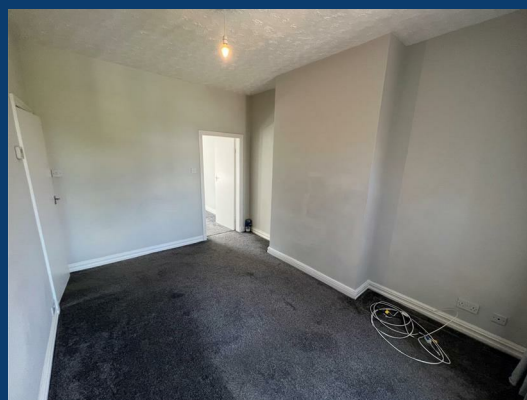




# Brookfield Terrace

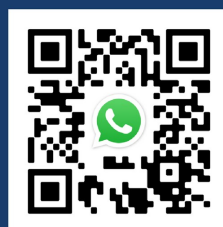
Stockport



£795 Per month



SEND US A MESSAGE



 **SPENCER HARVEY**  
PASSIONATE ABOUT PROPERTY



Energy Efficiency Rating		Current	Potential
Very energy efficient - lower running costs			
(92 plus) A			
(81-91) B			
(69-80) C			
(55-68) D			
(39-54) E			
(21-38) F			
(1-20) G			
Not energy efficient - higher running costs			
<b>England &amp; Wales</b>		EU Directive 2002/91/EC	
		63	78

## PROPERTY DESCRIPTION

**\*\*Available July\*\* Unfurnished\*\* Great location\*\***

This beautifully presented first floor one bedroom apartment is located in walking distance from Hazel Grove train station (commute to Manchester City Centre within 20 minutes).

On your doorstep you will find Hazel Grove's great selection of shops and Stepping Hill hospital. The Location of the property benefits from great transport links.

The apartment greets you with a fantastic living space; to your right you will find a modern kitchen. To your left you will find a storage cupboard, modern three piece bathroom and very good size double bedroom .

This property will suit commuters and professionals alike!

White goods can be gifted - Washing Machine, undercounter Fridge and Freezer

\*A Holding deposit of 1 weeks rent will be requested to be paid in order to reserve the property prior to let agreed.

## KEY FEATURES

- Available July
- First Floor Apartment
- Sough after location
- Unfurnished
- Double bedroom
- White goods can be gifted - Washing Machine, undercounter Fridge and Freezer
- EPC D

**LET AVAILABLE DATE:**

5th July 2023

**DEPOSIT:£917**

**MIN TENANCY: Add Text**

**LET TYPE: Add Text**

**FURNISH TYPE: Unfurnished**

**EPC RATING:**

D

**COUNCIL TAX**

**BAND:**

A

