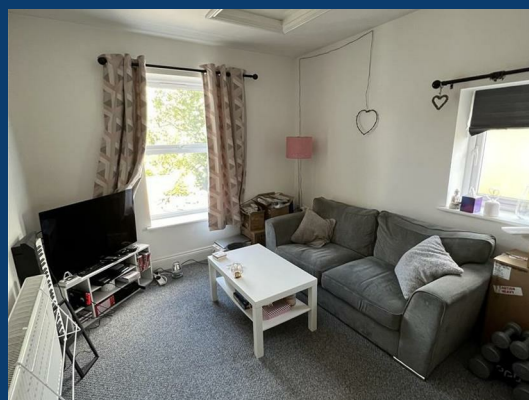
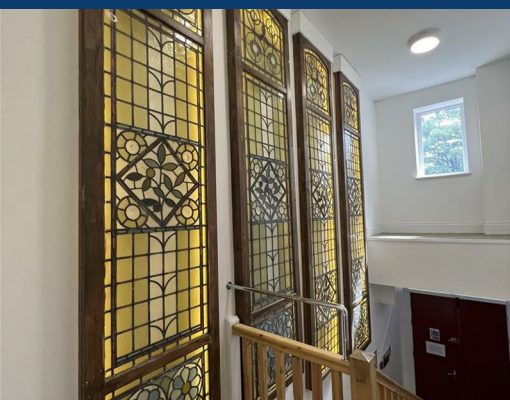




Cavendish Road

Manchester



£1,100 Per month

2 | 1 | 1


SEND US A MESSAGE



SPENCER HARVEY

PASSIONATE ABOUT PROPERTY



Energy Efficiency Rating		
	Current	Potential
Very energy efficient - lower running costs		
(92 plus) A		
(81-91) B		
(69-80) C		
(55-68) D		
(39-54) E		
(21-38) F		
(1-20) G		
Not energy efficient - higher running costs		
England & Wales		EU Directive 2002/91/EC 

PROPERTY DESCRIPTION

Located in a private development close to Monton Village this 2 bedroom apartment is ideal for commuters into Manchester and beyond!

The property is Available Late May on an Unfurnished basis with a minimum 12 month tenancy.

The apartment comprises of a entrance hallway leading to a generous open plan living/ dining room, a modern fitted kitchen with a Washing Machine and fridge freezer , two generous double bedrooms, and a separate modern fitted bathroom. Outside, the property benefits from well-maintained communal gardens, an allocated parking space with a visitors parking space.

EPC Rating C | Council Tax Band B

KEY FEATURES

- Available Late May
- 2 Bedroom Apartment
- Allocated Parking
- Close to Monton
- EPC Rating C
- Council Tax Band B
- Beautiful Communal Areas

LET AVAILABLE DATE:

DEPOSIT: £1,269

MIN TENANCY: Add Text

LET TYPE: Add Text

FURNISH TYPE: Unfurnished

EPC RATING:

COUNCIL TAX

BAND:

B

