



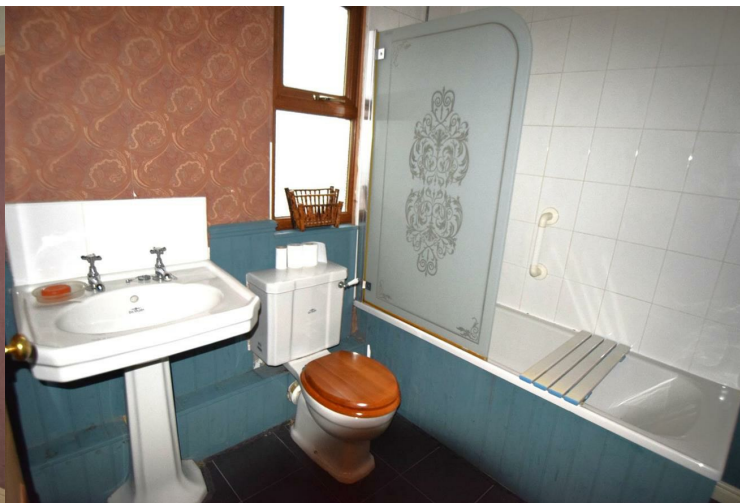
## Moscow Road East, Stockport,



Guide  
price

£250,000





## Moscow Road East, Stockport,

### Property Details

Moscow Road is such a highly sought after location with views over the reservoir this property is certain to attract a great deal of attention !!!

The property does require updating but offers FABULOUS potential for the right buyer.

The property occupies a corner position and briefly comprises: entrance hall, lounge, dining room, kitchen, useful basement area, two generous sized bedrooms plus a third bedroom/box room. To the rear there is a garden area along with storage/potential for garage subject to any appropriate consents.

This property has POTENTIAL written all over it, affording a variety of traditional features along with such a sought after location and simply SUPERB aspect from the front this really is an opportunity not to be missed !!!!

### Key Features

- Garden fronted end terraced
- Two generous bedrooms plus third bedroom/box room
- Lounge and dining room
- Useful basement area
- Superb location and aspect
- NO VENDOR CHAIN

#### Entrance Hall

#### Lounge

3.34m into recess x 4.29m into bay

Radiator, attractive feature place, UPVC double glazed window.

#### Dining Room

3.89m into recess x 4.33m

Radiator, attractive feature place, UPVC double glazed window.

#### Kitchen

2.87m x 3.09m

Sink unit, tiled flooring, UPVC double glazed window, door to outside, access to basement.

#### Basement

3.53m x 3.56m

#### First Floor Landing

#### Bedroom 1

4.67m into recess x 3.56m

Two UPVC double glazed windows, attractive feature fire place, radiator.

#### Bedroom 2

3.22m into recess x 4.34m into recess

UPVC double glazed window, radiator.

#### Bedroom 3 / Box Room

Gas central heating boiler, radiator, UPVC double glazed window.

## Bathroom

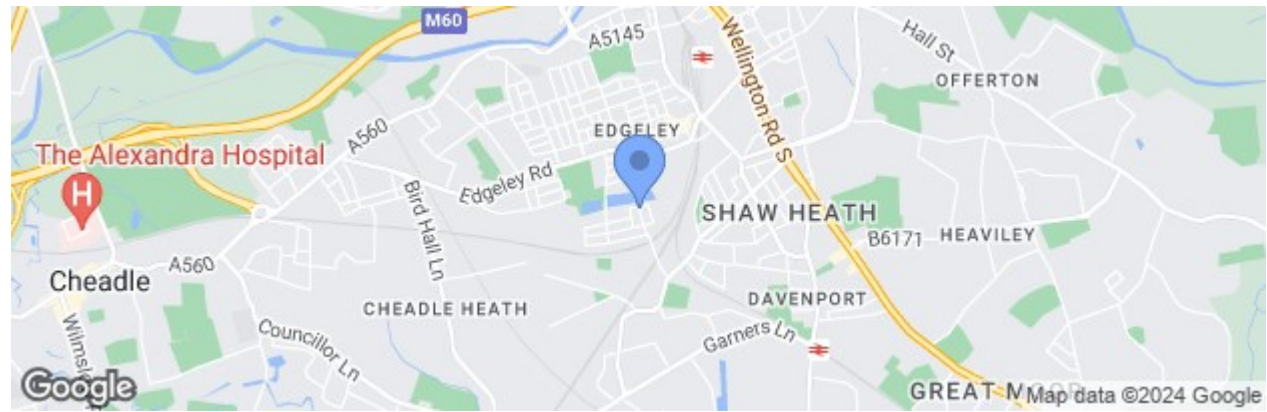
2.01m x 2.23m

Comprising: panel bath with overhead shower, wash hand basin, w.c., UPVC double glazed window, radiator.





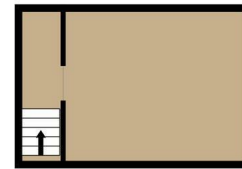
At Spencer Harvey, we are delighted to say that we are independent estate agents, which means that we will put your needs first at all times. If you want to learn more about why we are amongst the fastest growing independent estate agents in Manchester, please get in touch to arrange an appointment.



BASEMENT

GROUND FLOOR

1ST FLOOR




Whilst every attempt has been made to ensure the accuracy of the floorplan contained here, measurements of doors, windows, rooms and any other items are approximate and no responsibility is taken for any error, omission or mis-statement. This plan is for illustrative purposes only and should be used as such by any prospective purchaser. The services, systems and appliances shown have not been tested and no guarantee as to their operability or efficiency can be given.  
Made with Metropix ©2023



## Contact Us

 137 Shaw Heath Stockport

 0161 480 8888

 Sales@spencerharvey.co.uk

www.spencerharvey.co.uk

OR SEND US A  
MESSAGE



**COUNCIL TAX BAND:**

**B**

**TENURE:**

**Leasehold**

**EPC RATING:**

**E**

**LOCAL AUTHORITY:**

**Stockport**