



Thomson Street, Stockport,

 2 |  1 |  1

£155,000



Property Details

Thomson Street, Stockport,

Situated within a hop skip and jump away from vibrant Stockport town centre and its many varied recreational amenities and transport links this impressive top floor apartment really should be at the top of your list of properties to view.

Two superb bedrooms are complemented with a lounge, kitchen with a modern range of units and a generous sized bathroom. There is also the added bonus of an allocated parking space and there is also a lift to all floors.

With NO VENDOR CHAIN this really is a fabulous opportunity for anyone looking to buy their first home or indeed looking for a bolt hole property and take advantage of the nearby transport links.

NO TO BE MISSED !!!!

Key Features

- TOP FLOOR APARTMENT
- GREAT TOWN CENTRE LOCATION
- TWO BEDROOMS
- ALLOCATED PARKING SPACE
- NO VENDOR CHAIN
- VIEWING HIGHLY RECOMMENDED !!

Entrance Hall

Electric storage heater, laminate flooring.

Lounge

3.95m x 3.57m

Double glazed window, electric storage heater, useful storage cupboard.

Kitchen

Modern range of fitted wall and base units and work surfaces.

Bedroom 1

3.12m mx 3.60m into recess

Electric storage heater, double glazed window, mirror fronted wardrobes.

Bedroom 2

3.20m x 2.21m into wardrobes

Electric heater, double glazed window, mirror fronted wardrobes, laminate flooring.

Bathroom

2.66m x 2.24m

Comprising: panel bath with over head shower, wash hand basin, w.c., double glazed window,.

Anti Money Laundering Checks

Please be advised that, in accordance with legal requirements and to maintain compliance with Anti-Money Laundering regulations, prospective buyers are obligated to undergo AML checks upon acceptance of their offer for the property

listed in this brochure.

These AML checks are a mandatory part of the property transaction process and are designed to prevent and detect potential money laundering activities. The cost associated with each AML check is £30 per applicant, and this fee will be charged to the respective individuals undergoing the checks.

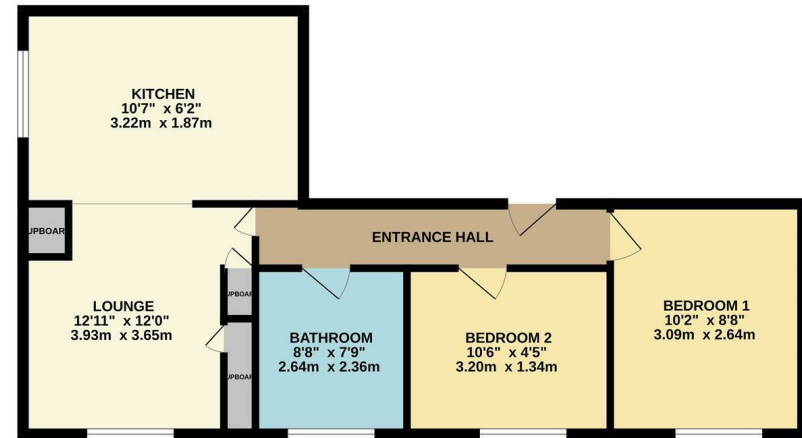
Please note that failure to comply with these AML checks may result in delays or complications in the completion of the property transaction.



At Spencer Harvey, we are delighted to say that we are independent estate agents, which means that we will put your needs first at all times. If you want to learn more about why we are amongst the fastest growing independent estate agents in Manchester, please get in touch to arrange an appointment.



GROUND FLOOR



Whilst every attempt has been made to ensure the accuracy of the floorplan contained here, measurements of doors, windows, rooms and other items are approximate and no responsibility is taken for any error, omission or mis-statement. This plan is for illustrative purposes only and should be used as such by any prospective purchaser. The services, fixtures and appliances shown have not been tested and no guarantee is to their operability or efficiency can be given.
Made with Metrepx (2023)



Contact Us

 137 Shaw Heath Stockport

 0161 480 8888

 Sales@spencerharvey.co.uk

www.spencerharvey.co.uk

OR SEND US A
MESSAGE



COUNCIL TAX BAND:

B

TENURE:

Leasehold

EPC RATING:

D

LOCAL AUTHORITY:

Stockport