

**TO LET**



**Fernley Park, Uckfield**  
**£1,700 pcm**

  
**MARTIN&CO**



## Fernley Park, Uckfield

Semi-Detached House,  
3 bedroom, 2 bathroom

£1,700 pcm

Date available: 24th May 2025

Deposit: £1961

Unfurnished

Council Tax band: D

- Virtual Tour Available
- Garage
- Sought-after Fernley Park development
- Enclosed Rear Garden

Available Date - From 24th May 2025

Holding Deposit - £392.00

Rent - £1700pcm

Deposit - £1961

Council Tax Band – 'D'

Electricity Supply – Mains services

Water Supply – Mains services

Sewerage – Mains services

Heating – Gas

Broadband – Ultrafast available (According to Ofcom)

Mobile Signal Coverage – Limited indoor & likely outdoor



(According to Ofcom)  
Parking – Off street

GROUND FLOOR

ENTRANCE HALL Cloakroom fitted with a modern suite.  
Under stair storage cupboard.

KITCHEN/DINER 17' 9" x 11' 2" (5.41m x 3.4m) Fully  
integrated kitchen with a range of eye level and base units,  
electric fan assisted oven with gas hob, integrated  
fridge/freezer, dishwasher and washer dryer. French doors  
leading to rear garden and patio area.

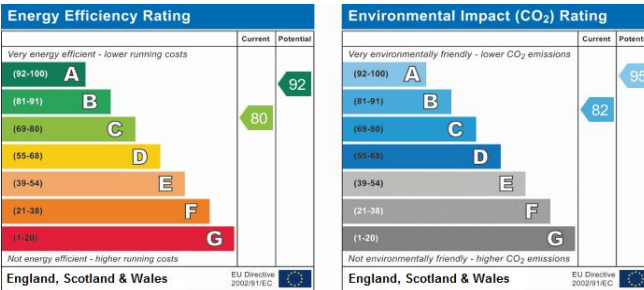
LIVING ROOM 17' 9" x 11' 2" (5.41m x 3.4m) Spacious  
room with doors leading to dining area.

FIRST FLOOR

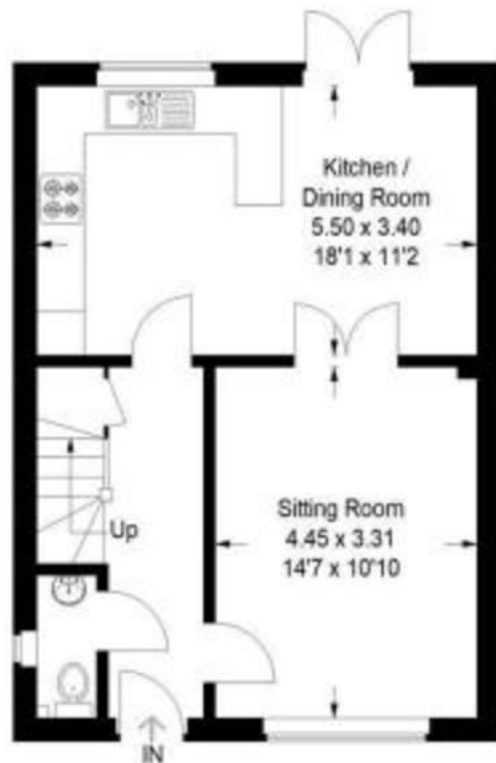
MASTER BEDROOM 11' 3" x 10' 7" (3.43m x 3.23m)  
Spacious Double with en-suite shower room fitted with a  
contemporary style suite and double shower.

BEDROOM TWO 11' 0" x 10' 7" (3.35m x 3.23m) Spacious  
double

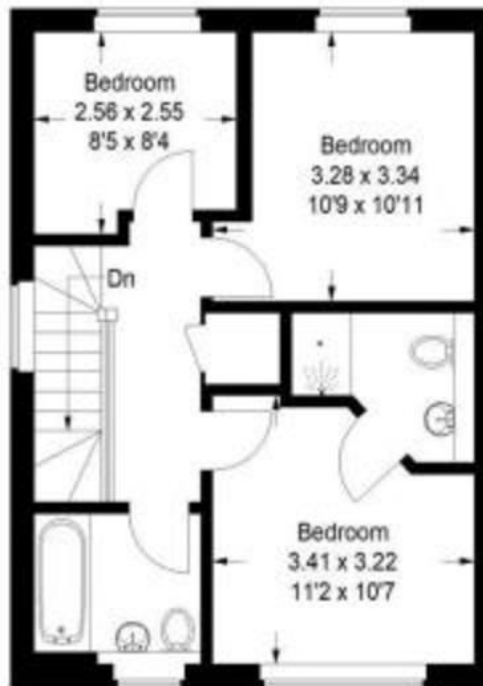
BEDROOM THREE 8' 4" x 8' 4" (2.54m x 2.54m) Good size  
single bedroom.



## Lyewood Way, Uckfield, TN22 5GL

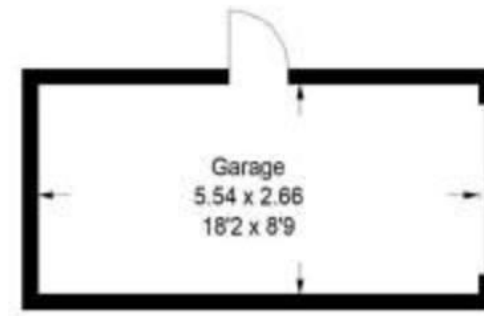


Ground Floor



First Floor

Approximate Gross Internal Area  
89.4 sq m / 962 sq ft  
Garage = 14.7 sq m / 158 sq ft  
Total = 104.1 sq m / 1120 sq ft



(Not Shown In Actual  
Location / Orientation)

### Martin & Co Uckfield

94c High Street • Uckfield • TN22 1PU  
T: 01825 744033 • E: uckfield@martinco.com

## 01825 744033

<http://www.martinco.com>

**MARTIN&CO**

**Accuracy:** References to the Tenure of a Property are based on information supplied by the Seller. The Agent has not had sight of the title documents. A Buyer is advised to obtain verification from their Solicitor. Items shown in photographs including but not limited to carpets, fixtures and fittings are not included unless specifically mentioned within the sales particulars. They may however be available by separate negotiation. Buyers must check the availability of any property and make an appointment to view before embarking on any journey to see a property. No person in the employment of the agent has any authority to make any representation about the property, and accordingly any information given is entirely without responsibility on the part of the agents, sellers(s) or lessors(s). Any property particulars are not an offer or contract, nor form part of one. **Sonic / Laser Tape:** Measurements taken using a sonic / laser tape measure may be subject to a small margin of error. **All Measurements:** All Measurements are Approximate. **Services Not tested:** The Agent has not tested any apparatus, equipment, fixtures and fittings or services and so cannot verify that they are in working order or fit for the purpose. A Buyer is advised to obtain verification from their Solicitor or Surveyor.