

FOR SALE



Mead Lane, Buxted, Uckfield

2 Bedrooms, 2 Bathroom, Apartment

Offers Over £210,000



ENTRANCE HALL With storage cupboard and entry phone system.

LIVING ROOM 19' 5" x 13' 1" (5.92m x 3.99m)
Spacious dual aspect open plan living room with Juliet balcony.

KITCHEN Modern fitted with a range of eye level and base units, fan assisted electric oven with gas hob, integrated fridge freezer, dishwasher and washer dryer.

MASTER BEDROOM 12' 4" x 12' 0" (3.76m x 3.66m)
Spacious and bright double bedroom with Juliet balcony. En Suite shower room with WC.

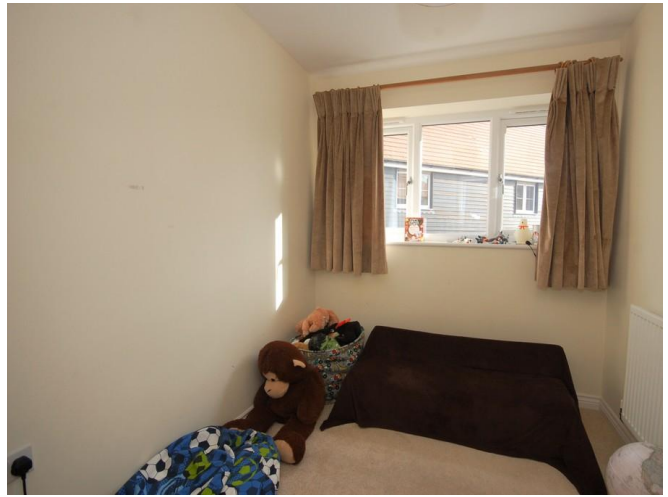
BEDROOM 2 6' 9" x 8' 5" (2.06m x 2.57m) Single bedroom.

OUTSIDE Allocated car port provides parking for one car.

- Gas Central Heating
- Under Cover Parking
- Close to Buxted Station
- Integrated Appliances
- Village Location
- 116 Year Lease

Energy Efficiency Rating		Current	Potential
Very energy efficient - lower running costs			
(92-100)	A		
(81-91)	B	82	84
(69-80)	C		
(55-68)	D		
(39-54)	E		
(21-38)	F		
(1-20)	G		
Not energy efficient - higher running costs			

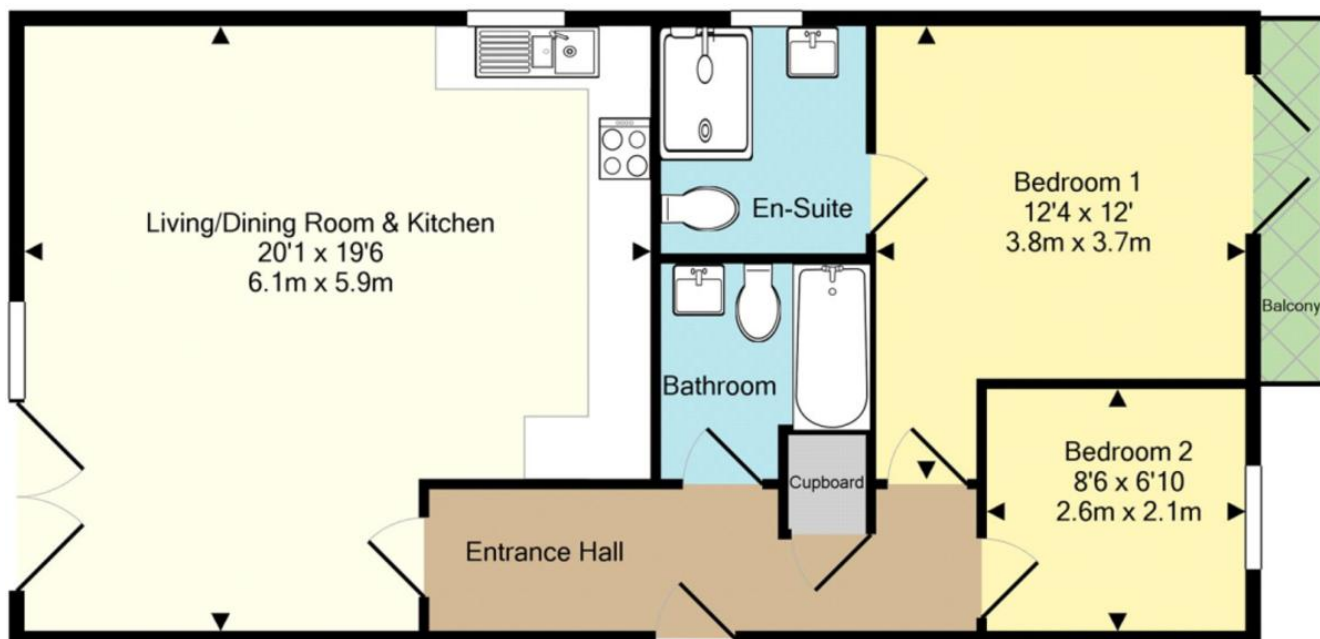
Buxted is a village in the Wealden district very close to Uckfield Town. The village has fantastic road and rail links and has a railway station in the village centre giving access to Uckfield and London. The parish contains a site of specific interest, Buxted Park an old Deer park around which there are many miles of lovely walks. The village also boasts Two nice pubs the Buxted Inn and the White Hart as well as the Buxted Park Hotel. The town of Uckfield nearby offers a wide range of shopping facilities including boutique shops, coffee bars



as well as two supermarkets. The area boasts excellent sporting facilities including a leisure centre with pool, tennis courts, football pitches and a cricket club. After exploring the shops why not pay a visit to the cinema which was established in 1916 and is one of the oldest in the country, it now shows all the latest blockbusters while retaining its historic charm. Nearby are several local pubs and Restaurants where you can enjoy a pint of Harveys brewed only a few miles away in the historic town of Lewes.

Just outside of Uckfield is access to the wonderful Ashdown Forest park boasting over 6500 acres of natural beauty and the South Downs National Park where you can walk and ride enjoying the spectacular views of both these areas.





Mead Lane - Plan For Layout Purposes Only

Total Approx. Floor Area 757 Sq.Ft. (70.3 Sq.M.)

Whilst every attempt has been made to ensure the accuracy of the floor plan contained here, measurements of doors, windows, rooms and any other items are approximate and no responsibility is taken for any error, omission, or mis-statement. This plan is for illustrative purposes only and should be used as such by any prospective purchaser. The services, systems and appliances shown have not been tested and no guarantee as to their operability or efficiency can be given

Made with Metropix ©2019

Martin & Co Uckfield

94c High Street • Uckfield • TN22 1PU
T: 01825 744033 • E: uckfield@martinco.com

01825 744033

<http://www.martinco.com>



Accuracy: References to the Tenure of a Property are based on information supplied by the Seller. The Agent has not had sight of the title documents. A Buyer is advised to obtain verification from their Solicitor. Items shown in photographs including but not limited to carpets, fixtures and fittings are not included unless specifically mentioned within the sales particulars. They may however be available by separate negotiation. Buyers must check the availability of any property and make an appointment to view before embarking on any journey to see a property. No person in the employment of the agent has any authority to make any representation about the property, and accordingly any information given is entirely without responsibility on the part of the agents, sellers(s) or lessors(s). Any property particulars are not an offer or contract, nor for part of one. **Sonic / laser Tape:** Measurements taken using a sonic / laser tape measure may be subject to a small margin of error. **All Measurements:** All Measurements are Approximate. **Services Not tested:** The Agent has not tested any apparatus, equipment, fixtures and fittings or services and so cannot verify that they are in working order or fit for the purpose. A Buyer is advised to obtain verification from their Solicitor or Surveyor.