



SPENCERS  
LETTINGS

## Needles View Kings Saltern Road Lymington

£3,850 PCM

A wonderful opportunity to rent this detached 5 bedroom family home located on the sought-after south side of Lymington High Street, nestled beside the picturesque Yacht Haven Marina. This beautifully presented residence offers a blend of contemporary design and coastal charm, ideal for those seeking a relaxed yet refined lifestyle. Holding deposit: £888 Security deposit: £4442 Council tax band: F



- Fantastic location • Gardener included • South facing garden • Long term • Well presented • Hot tub • Underfloor heating • Available January 2026

The ground floor features a practical utility room with a shower en suite, perfect for guests or multi-generational living. The heart of the home is a stunning open-plan kitchen, dining, and seating area, complete with underfloor heating and bi-fold doors opening onto a sun-drenched south-facing garden and patio-ideal for entertaining or unwinding.

Additional ground floor spaces include a cosy snug room and a characterful library, which leads to a unique downstairs bedroom featuring a slipper bath and basin, offering a boutique-style retreat.

Upstairs, the main bedroom benefits from a shower en suite, complemented by three further double bedrooms, all thoughtfully arranged to provide comfort and privacy. The property also benefits from solar heating, enhancing its eco-friendly appeal.

Outside, there is a detached garage and off-road parking. Tenants will also enjoy the use of a hot tub and the services of a gardener, ensuring the outdoor space remains as immaculate as the interior.

The property's construction is brick and tile.

The property has mains gas central heating, an electricity supply, mains water and mains drainage.

The broadband and mobile availability can be checked via the Ofcom's "broadband and mobile coverage checker" on their website.

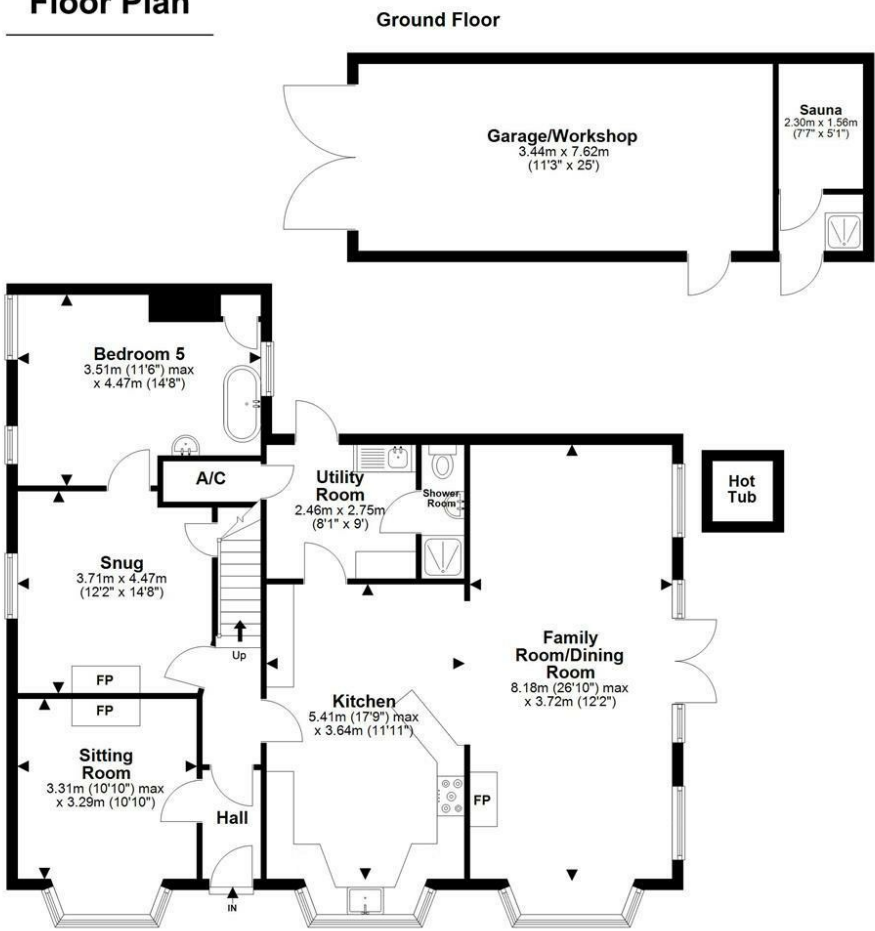
#### ADDITIONAL INFORMATION

Council tax band: F Furnishing Type: Unfurnished Security Deposit: £4,442 Available From: 9th January 2026





Floor Plan



**Approx Gross Internal Areas**

House: 180.3 sqm / 1940.9 sqft  
Garage Outbuilding: 31.9 sqm / 342.9 sqft

**Total Approx Gross Area:  
212.2 sqm / 2283.8 sqft**

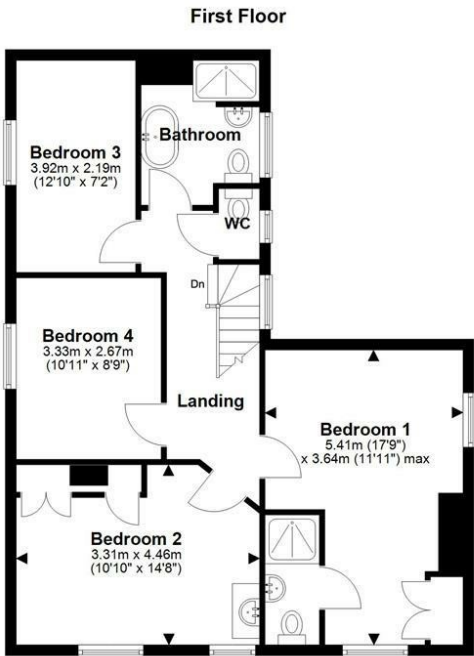
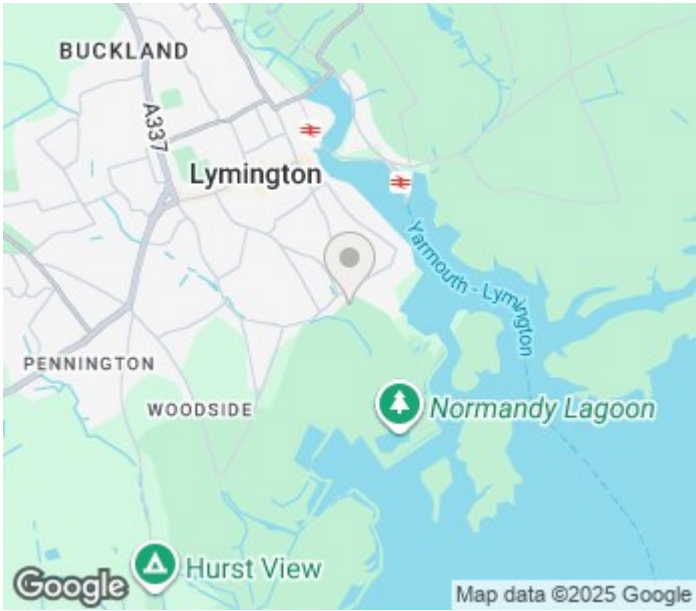


Illustration for identification purposes only; measurements are approximate, not to scale. [www.fpusketch.co.uk](http://www.fpusketch.co.uk)  
Plan produced using PlanUp.



Energy Efficiency Rating

	Current	Potential
Very energy efficient - lower running costs		
(92 plus) A		
(81-91) B		
(69-80) C	74	
(55-68) D		
(39-54) E		
(21-38) F		
(1-20) G		
Not energy efficient - higher running costs		
England & Wales	EU Directive	

Agents Note: Whilst every care has been taken to prepare these particulars, they are for guidance purposes only. All measurements are approximate and are for general guidance purposes only and whilst every care has been taken to ensure their accuracy, they should not be relied upon and potential buyers/tenants are advised to recheck the measurements.



# SPENCERS

LETTINGS

## ABOUT US

Spencers' lettings office offers a dedicated, specialist lettings service with every aspect managed in-house, from maintenance to property inspections. The team undergo regular training to keep on top of continually changing legislation and are frequently praised by landlords and tenants for their friendly professionalism, thoroughness and reliability. The office works closely with Spencers' estate agency offices and broadly covers the New Forest area including Lymington and Lyndhurst, Romsey and Totten, Beaulieu, Ringwood, Brockenhurst, Burley and the Christchurch area including Highcliffe and Barton on Sea.



## CONTACT US

Lymington

Highcliffe 01425 205000

Romsey 01794 331433

[lettings@spencersproperty.co.uk](mailto:lettings@spencersproperty.co.uk)

[www.spencersnewforest.com](http://www.spencersnewforest.com)