



18A Tadburn Road
Romsey

£925 PCM

This first floor 1 bed maisonette is well presented and approx 1/2 mile from the centre of Romsey.

To rent this property you need to prove a yearly income of £27,750 provide a 5 weeks deposit of £1067 to include a holding deposit of £213



- 1 bed • Close to Romsey • Large lounge with Bay window • Fitted kitchen • Bath with shower • Parking for 1 • Available early August

The property includes a large lounge with a bay window at the front. A good size bedroom at the rear, fitted kitchen and bathroom with shower.

All rooms have double glazing and gas central heating

In addition there is 1 private parking space

1/2 mile from Romsey centre

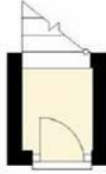
A viewing is highly recommended

For broadband and mobile coverage please refer to offCom

ADDITIONAL INFORMATION

Council tax band: B Furnishing Type: Unfurnished Security Deposit: £1,067 Available From: 14th August 2025





First Floor

Approx. 46.4 sq. metres (499.8 sq. feet)



Total area: approx. 47.5 sq. metres (511.4 sq. feet)



Energy Efficiency Rating

	Current	Potential
Very energy efficient - lower running costs		
(92 plus) A		
(81-91) B		
(69-80) C		
(55-68) D		
(39-54) E		
(21-38) F		
(1-20) G		
Not energy efficient - higher running costs		
63	70	
England & Wales	EU Directive	



SPENCERS

LETTINGS

ABOUT US

Spencers' lettings office offers a dedicated, specialist lettings service with every aspect managed in-house, from maintenance to property inspections. The team undergo regular training to keep on top of continually changing legislation and are frequently praised by landlords and tenants for their friendly professionalism, thoroughness and reliability. The office works closely with Spencers' estate agency offices and broadly covers the New Forest area including Lymington and Lyndhurst, Romsey and Totten, Beaulieu, Ringwood, Brockenhurst, Burley and the Christchurch area including Highcliffe and Barton on Sea.



CONTACT US

Lymington 01794 331433

Highcliffe 01425 205000

Romsey 01794 331433

lettings@spencersproperty.co.uk

www.spencersproperty.com