



WESTMINSTER COURT, WHITEHALL CLOSE, COLCHESTER, CO2

£875 PCM





Ezelet are delighted to offer to the rental market a two-bedroom first floor Maisonette, close to local amenities, this property has a large lounge area, kitchen with washing machine, one double bedroom and a single bedroom, family bathroom, communal garden to the rear, this property is offered unfurnished and is available 29th August 2024. An early viewing is advised to appreciate the accommodation to offer.

#### ENTRANCE HALL

Glass door leading to the upstairs and first floor landing.

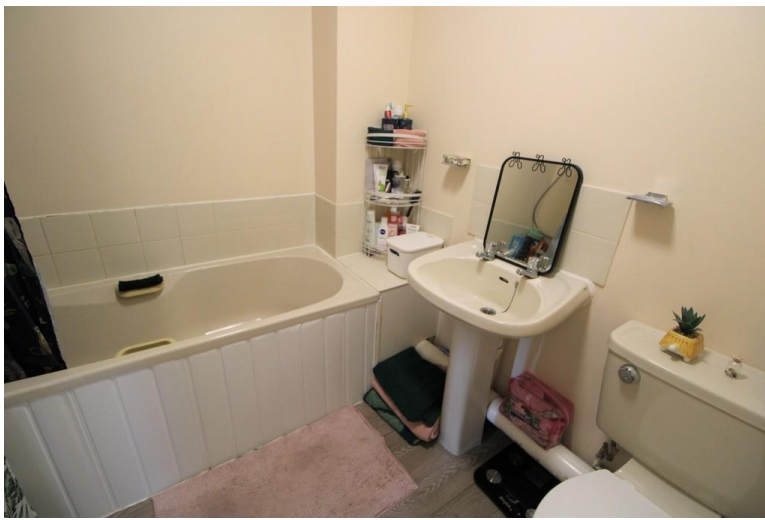


#### LIVING ROOM

13' 7" x 12' 6" (4.14m x 3.81m) UPVC double glazed window to the rear, storage heater, fitted carpet.

#### KITCHEN

9' 8" x 5' 10" (2.95m x 1.78m) UPVC double glazed window to the rear, eye level and base units with over worktops, inset stainless steel sink, integrated oven/ hob, extractor fan, fridge/ freezer, washing machine, vinyl flooring.



### BEDROOM ONE

11' 22" x 8' 8" (3.91m x 2.64m) UPVC double glazed window to the front, built in wardrobe, electric heater, fitted carpet.

### BEDROOM TWO

11' 5" x 6' 4" (3.48m x 1.93m) UPVC double glazed window to the front, built in wardrobe, electric heater, fitted carpet.

### COMMUNAL GARDEN

Laid to lawn communal garden.

### PARKING

Parking for one vehicle.

Rent: £875.00

Holding Deposit: £201.92

Security Deposit: £1,009.61

