



45 NIGHTINGALE RISE,
PORTISHEAD, BS20 8LN

GOODMAN
& LILLEY







45 NIGHTINGALE RISE

PORTISHEAD BS20 8LN

GUIDE PRICE
£500,000

A well-presented four-bedroom detached home, ideally located in a sought-after position with excellent public transport links. Boasting a stunning garden, garage, and driveway, this property offers both comfort and convenience.

This spacious property offers versatile living accommodation, including two generous reception rooms—perfect for both entertaining and family life. A modern kitchen is complemented by a separate utility room for added convenience. Upstairs, the master bedroom benefits from a stylish en-suite, with three further well-proportioned bedrooms and a family bathroom. Outside, the home boasts a stunning, well-maintained garden ideal for relaxing or outdoor gatherings. A garage and private driveway provide ample parking. Located close to local amenities and within walking distance of a nearby play park, this property is ideal for families looking for comfort, space, and convenience.

Upon entering the property, you are welcomed by a spacious entrance hall featuring a side window that fills the space with natural light. From here, doors lead to both the living room and the kitchen. The living room is bright and inviting, with a charming bay window to the front and a set of double doors that create a seamless flow into the dining room. The dining area enjoys direct access to the beautifully manicured rear garden, making it ideal for indoor-outdoor living and entertaining. The kitchen is fitted to a modern standard and offers a pleasant view over the garden. It opens into a practical utility room, which provides additional storage with a range of cupboards, space for a washing machine and tumble dryer, as well as access to the garden and a convenient downstairs WC.

The gallery-style first-floor landing is flooded with natural light and provides access to all four

bedrooms. Three of the bedrooms are generously sized doubles, including the impressive master suite, which features built-in wardrobes, a charming character-style window seat with storage beneath, and a private en-suite shower room. The landing also gives access to the stylish family bathroom and a useful airing cupboard.

Both the front and rear gardens are absolutely stunning and have been beautifully maintained. The front garden features a mature lawn bordered by colourful flowerbeds and established trees, along with driveway parking and access to the garage. The rear garden is equally impressive, offering a private and tranquil space perfect for outdoor living. A paved patio provides an ideal spot for al fresco dining, leading onto a well-manicured lawn surrounded by mature flower and shrub borders. A garden shed is neatly tucked away behind decorative trellis and climbing plants, adding both charm and practicality to this delightful outdoor space.

- Well Presented Throughout
- Modern Kitchen And Bathrooms
- Great Transport Links
- No Onward Chain
- Stunning Front And Rear Gardens
- Utility Room With Garden Access
- Driveway Parking
- Two Reception Rooms
- Quiet Location
- Integral Single Garage





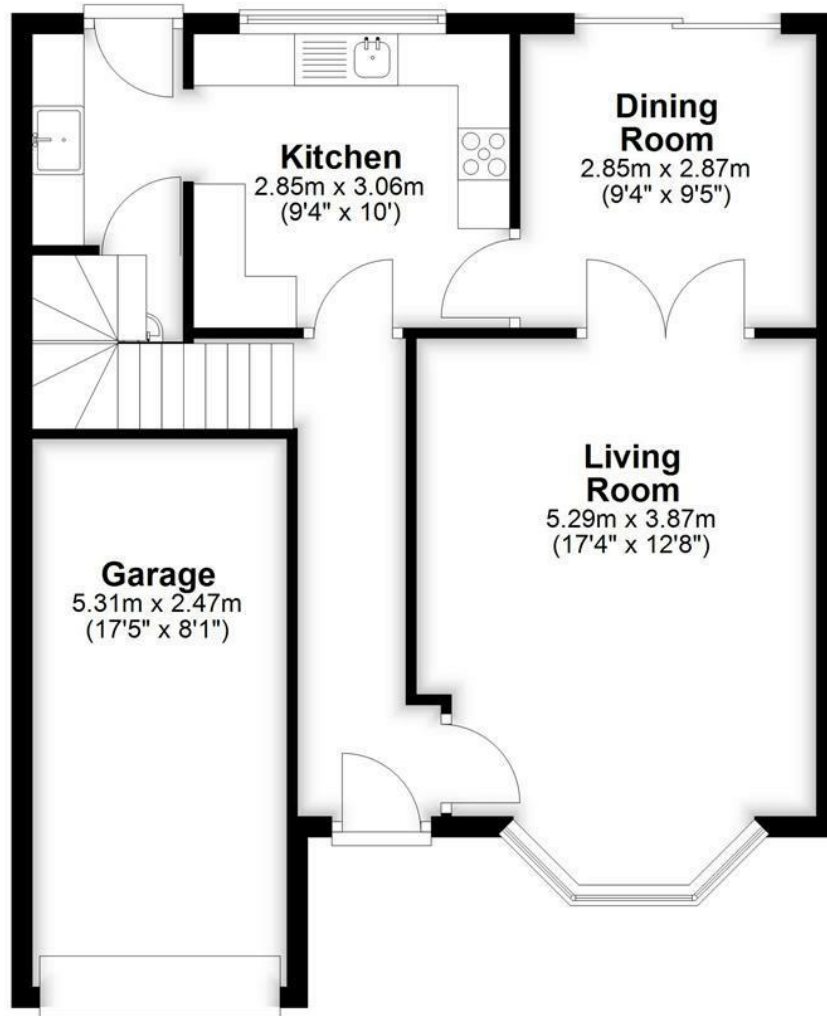


GOODMAN
& LILLEY



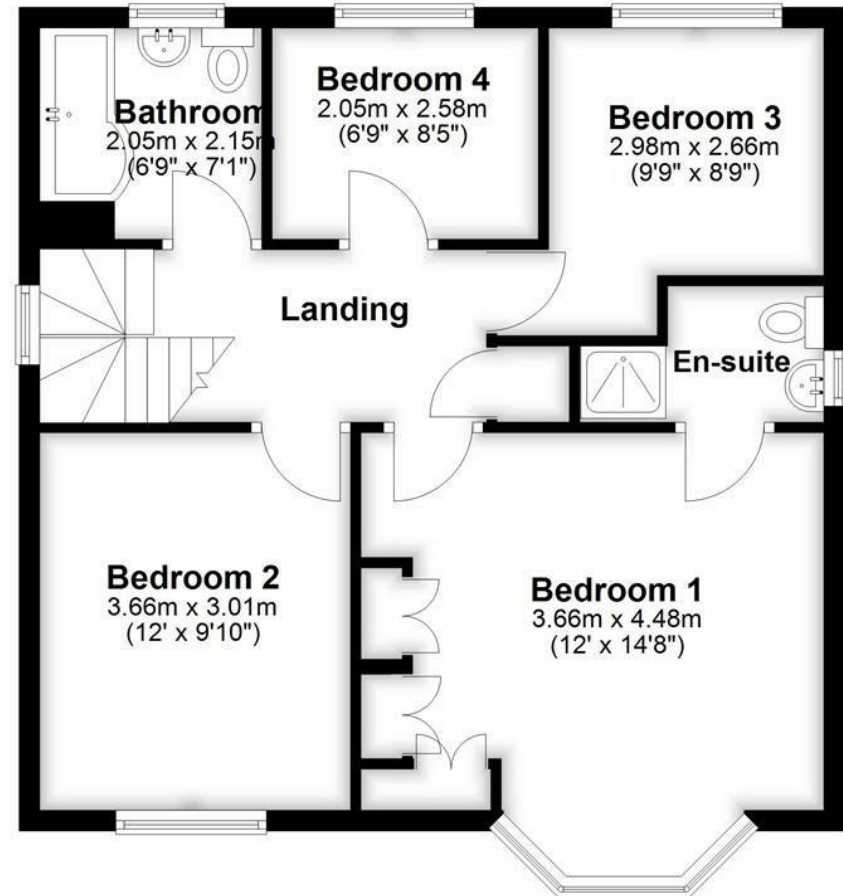
Ground Floor

Approx. 61.9 sq. metres (666.2 sq. feet)



First Floor

Approx. 57.8 sq. metres (622.4 sq. feet)



Total area: approx. 119.7 sq. metres (1288.7 sq. feet)

HENLEAZE

156 Henleaze Road
Henleaze BS9 4NB
henleaze@goodmanlilley.co.uk

0117 213 0777

PORTISHEAD

36 High Street
Portishead BS20 6EN
sales@goodmanlilley.co.uk

01275 430 440

SHIREHAMPTON

9 High Street
Shirehampton BS11 0DT
shire@goodmanlilley.co.uk

0117 213 0333

LETTINGS

lettings@goodmanlilley.co.uk

01275 299 010

0117 213 0101

LAND & NEW HOMES

156 Henleaze Road
Henleaze BS9 4NB
LNH@goodmanlilley.co.uk

0117 213 0151



These particulars are for general guidance only. They do not form or constitute any part of an offer or contract. Goodman & Lilley has not carried out structural surveys of the property. The services, appliances or specific fittings mentioned in these details have not been tested. Every attempt is made to ensure accuracy, however all photographs, measurements, floor plans and distances are for illustrative purposes only. They must not be relied upon when purchasing carpets and or other fixtures & fittings. Lease details, service charges and ground rents are given as a guide only. They should be checked and confirmed by a licensed solicitor prior to exchange of contracts. The copyright of all details, photographs and floor plans remain exclusive to Goodman & Lilley.



rightmove

Zoopla