



21 HEYWOOD TERRACE,
PILL, BS20 0EA

GOODMAN
& LILLEY







21 HEYWOOD TERRACE

PILL BS20 0EA

GUIDE PRICE
£350,000

A rare renovation opportunity—this unusually large 1,400+ sq ft Victorian end-of-terrace offers three double bedrooms, original features, off-street parking, a garage, and a generous garden, all in a prime location. Full modernisation required.

This substantial Victorian end-of-terrace home, originally built for the area's developer, offers over 1,400 sq ft of beautifully proportioned accommodation—making it significantly larger than average for the area. The property is in need of full renovation throughout, offering an exciting opportunity for buyers to restore and customise a characterful home to their own tastes and standards.

Station – 10.5 miles, Bristol Airport – 12 miles
(distances are approximate)

Tenure: Freehold

Local Authority: North Somerset Council, Tel:
01934 888888

Council Tax Band: D

To the ground floor, a bright and airy entrance hall welcomes you with its original sweeping staircase, leading to two generously sized reception rooms—both featuring bay windows and high ceilings that retain the grandeur of the Victorian era. Also on this level is a spacious kitchen/breakfast room, a utility area, and a downstairs WC.

Upstairs, the first floor comprises two exceptionally large bedrooms, which have been altered over the years but offer the potential to be reconfigured to create additional rooms, if required. A further double bedroom and a family bathroom complete the layout.

Rarely available in this sought-after location, the property also benefits from off-street parking and a private garage—an extremely rare asset for homes of this age. A generous rear garden provides further scope for extension or landscaping (STPP), making this a truly exciting project with immense potential.

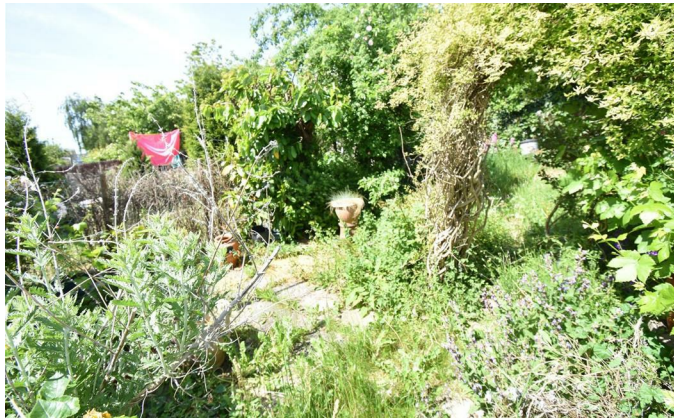
Additional information

M5 (J19) – 3 miles, M4 (J20) – 11 miles, Bristol
Parkway Station – 14 miles, Bristol Temple Meads

- End Of Terrace Character Property
- In Need Of Complete Modernisation
- Spacious Rear Garden
- Over 1400Sqft
- Three Exceptional Double Bedrooms
- Great Potential Throughout
- Prime Location
- Three Reception Rooms
- Garage And Off Road Parking
- Great Transport Links Into Bristol





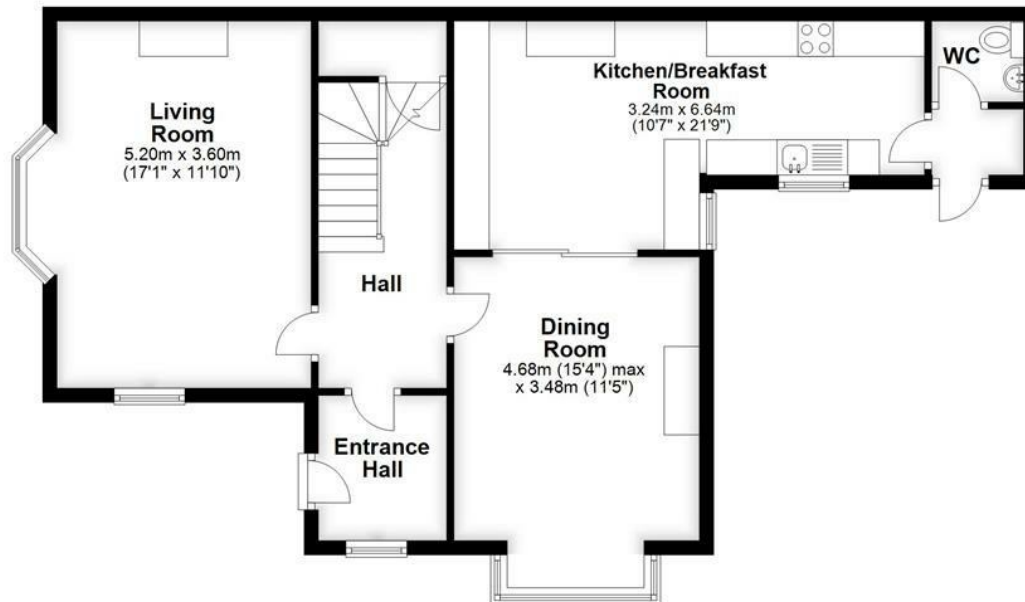


GOODMAN
& LILLEY



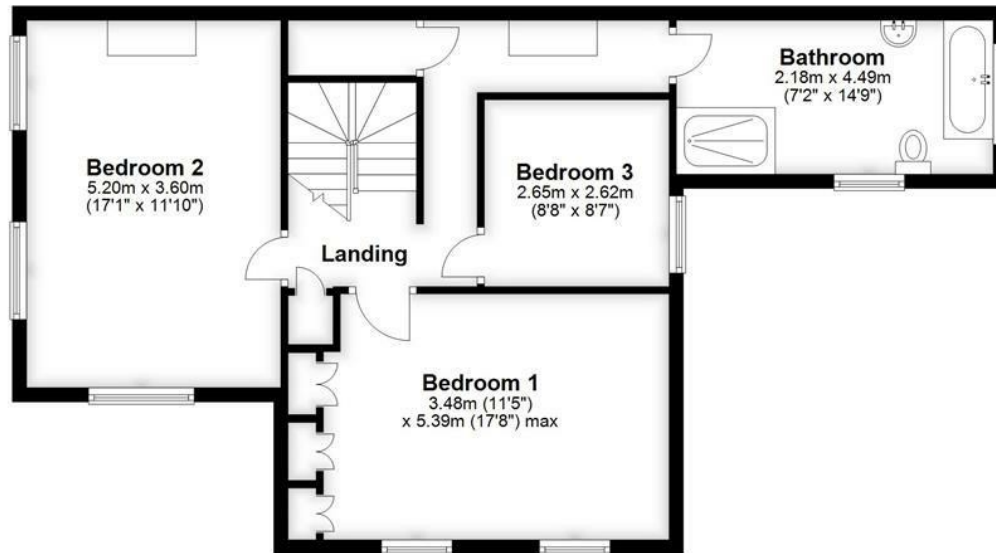
Ground Floor

Approx. 69.8 sq. metres (751.1 sq. feet)



First Floor

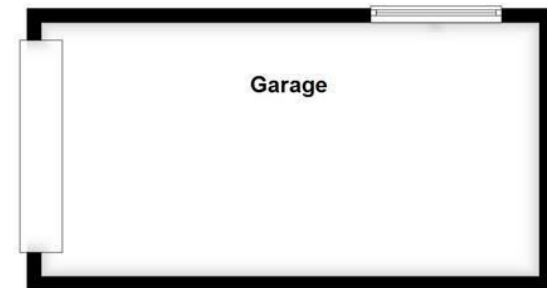
Approx. 69.2 sq. metres (744.9 sq. feet)



Total area: approx. 139.0 sq. metres (1495.9 sq. feet)

Garage

Approx. 0.0 sq. metres (0.0 sq. feet)



HENLEAZE

156 Henleaze Road
Henleaze BS9 4NB
henleaze@goodmanlilley.co.uk

0117 213 0777

PORTISHEAD

36 High Street
Portishead BS20 6EN
sales@goodmanlilley.co.uk

01275 430 440

SHIREHAMPTON

9 High Street
Shirehampton BS11 0DT
shire@goodmanlilley.co.uk

0117 213 0333

LETTINGS

lettings@goodmanlilley.co.uk

01275 299 010

0117 213 0101

LAND & NEW HOMES

156 Henleaze Road
Henleaze BS9 4NB
LNH@goodmanlilley.co.uk

0117 213 0151



These particulars are for general guidance only. They do not form or constitute any part of an offer or contract. Goodman & Lilley has not carried out structural surveys of the property. The services, appliances or specific fittings mentioned in these details have not been tested. Every attempt is made to ensure accuracy, however all photographs, measurements, floor plans and distances are for illustrative purposes only. They must not be relied upon when purchasing carpets and or other fixtures & fittings. Lease details, service charges and ground rents are given as a guide only. They should be checked and confirmed by a licensed solicitor prior to exchange of contracts. The copyright of all details, photographs and floor plans remain exclusive to Goodman & Lilley.



rightmove

Zoopla