



76 SOUTH ROAD,  
PORTISHEAD, BS20 7DY

---

GOODMAN  
& LILLEY



THIS SIZEABLE FOUR-BEDROOM SEMI-DETACHED HOME IS TUCKED AWAY IN A QUIET AND DESIRABLE POSITION, OFFERING BOTH SPACE AND VERSATILITY FOR MODERN FAMILY LIVING. THE PROPERTY HAS BEEN THOUGHTFULLY EXTENDED ON THE GROUND FLOOR TO CREATE A STUNNING OPEN-PLAN KITCHEN AND DINING SPACE, COMPLETE WITH A VAULTED CEILING AND SEAMLESS FLOW ONTO THE REAR TERRACE—PERFECT FOR ENTERTAINING OR RELAXED EVERYDAY LIVING.

To the front of the property, a cosy lounge with a wood-burning stove provides a warm and inviting retreat. This space flows effortlessly into the rear-facing open-plan kitchen/diner, which offers ample space for a large dining table and makes a fantastic family hub. Double doors lead directly onto the raised deck, creating a seamless connection between indoor and outdoor living. Also on the ground floor is a versatile double bedroom with an en-suite—ideal for guests, multi-generational living, or those seeking ground floor accommodation.

Stairs rise to the first floor, where a rear-facing window offers a pleasant outlook. From the landing, doors lead to bedrooms one and two—both generous doubles—along with a third bedroom and a well-appointed shower room.

Externally, the property features a tiered rear garden with a lawned area and two raised decked terraces. The top deck enjoys an elevated view towards the town centre, providing a peaceful spot to relax or entertain.

Just a short stroll from the Lake Grounds and marina, this home is perfectly positioned for young families looking to enjoy outdoor living while remaining close to local amenities and well-regarded schools.

M5 (J19) 3 miles, M4 (J20) 11 miles, Bristol Parkway 14 miles, Bristol Temple Meads 10.5 miles, Bristol Airport 12 miles (distances approximate)

Tenure: Freehold

Local Authority: North Somerset Council Tel: 01934 888888

Council Tax Band: B

Services: All mains services connected.

All viewings strictly by appointment with the agent Goodman & Lilley - 01275 430440

- Four Bedroom Semi-Detached Home
- Ground Floor Bedroom With En-suite
- Quiet Position
- Great Condition Throughout

- Extended Ground Floor Living Space
- Close To The Marina And Lake Grounds
- Spacious Garden With Pleasant Outlook
- Cosy Lounge With Wood Burner



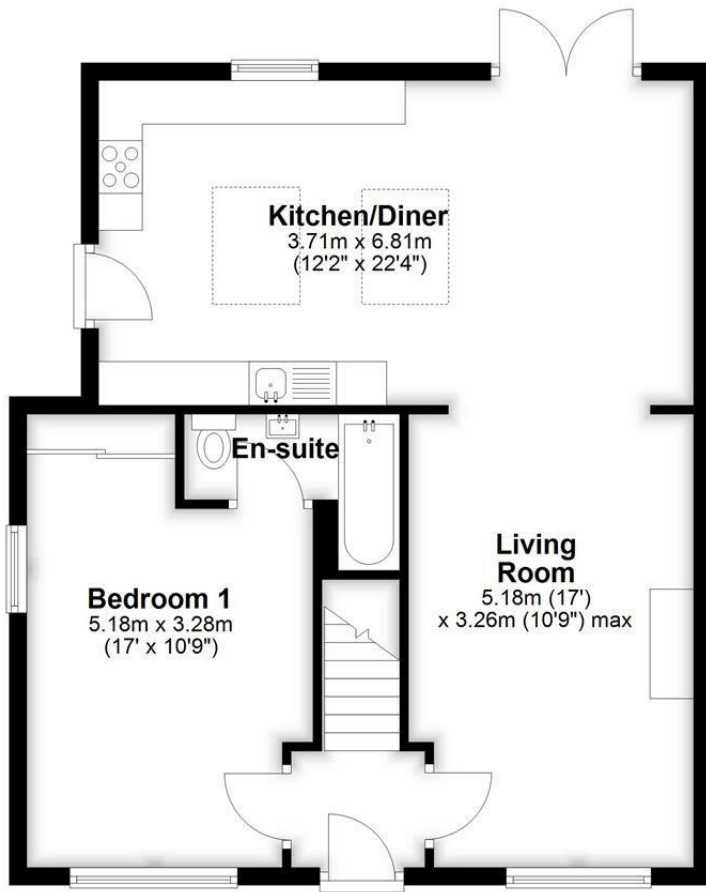
GUIDE PRICE £425,000





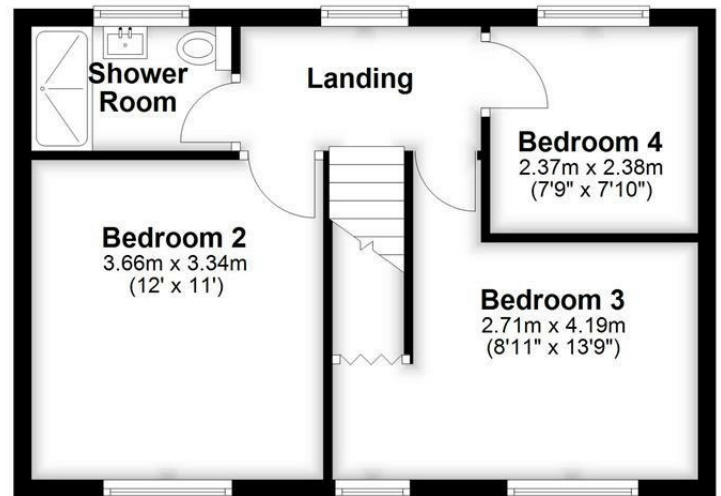
## Ground Floor

Approx. 65.5 sq. metres (704.7 sq. feet)



## First Floor

Approx. 39.5 sq. metres (425.4 sq. feet)



Total area: approx. 105.0 sq. metres (1130.1 sq. feet)

**HENLEAZE** - 0117 2130777

henleaze@goodmanlilley.co.uk

**PORTISHEAD** - 01275 430440

sales@goodmanlilley.co.uk

**SHIREHAMPTON** - 0117 2130333

shire@goodmanlilley.co.uk

Zoopla.co.uk

rightmove



**WWW.GOODMANLILLEY.CO.UK**

These particulars are for general guidance only. They do not form or constitute any part of an offer or contract. Goodman & Lilley has not carried out structural surveys of the property. The services, appliances or specific fittings mentioned in these details have not been tested. Every attempt is made to ensure accuracy, however all photographs, measurements, floor plans and distances are for illustrative purposes only. They must not be relied upon when purchasing carpets and or other fixtures & fittings. Lease details, service charges and ground rents are given as a guide only. They should be checked and confirmed by a licensed solicitor prior to exchange of contracts. The copyright of all details, photographs and floor plans remain exclusive to Goodman & Lilley.