



9 Albright Court Newfoundland Way, Portishead, BS20 7QE
Guide Price £285,000

GOODMAN
& LILLEY



THE INDEPENDENT SALES, LETTINGS & LAND AGENTS

9 Albright Court Newfoundland Way, Portishead, BS20 7QE

Sold Prior To Marketing - Conveniently located is this spacious, two double bedroom first floor apartment apartment offered for sale in immaculate condition, complete with large sun terrace.

- Marina Apartment
- Master En-Suite
- Convenient Location
- Allocated Parking Space
- Two Double Bedrooms
- Sun Terrace & Balcony
- Lounge/Dining/Kitchen
- Close To Marina Quayside

This immaculately presented apartment offers on total 740 SQ.FT of accommodation and is perfect for first time buyers and investors alike. In brief, the property comprises: entrance hall, open-kitchen/diner/living room leading to the balcony, two double bedrooms, master en-suite, family bathroom with a large sun terrace. The apartment also benefits from having an allocated parking space.

Perfectly suited to those who love to socialise as well as those who enjoy nothing more than a peaceful place to relax and unwind. With some great new bars, restaurants and shops, such as Waitrose, on its doorstep along with some wonderful scenic, level walks around the water’s edge or down towards nearby nature reserve, this truly is an apartment that will impress all that enter through its door. Contact agents Goodman & Lilley to arrange your next viewing on 01275 430440.

M5 (J19) 3 miles, M4 (J20) 11 miles, Bristol Parkway 14 miles, Bristol Temple Meads 10.5 miles, Bristol Airport 12 miles (distances approximate)

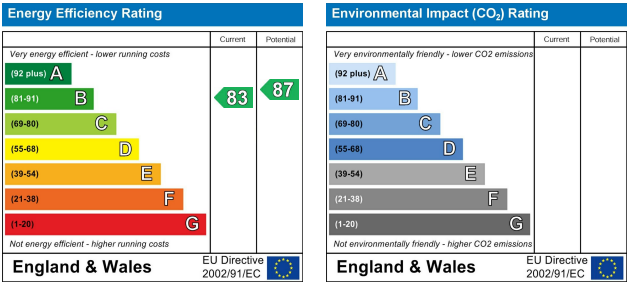
Tenure: Leasehold with management charges of £1300.00 PA with remainder of 995 years on the lease.

Local Authority: North Somerset Council Tel: 01934 888888

Council Tax Band: B

Services: Electric, Mains Water & Drainage

Viewings strictly by appointment with the agent Goodman & Lilley 01275 430440

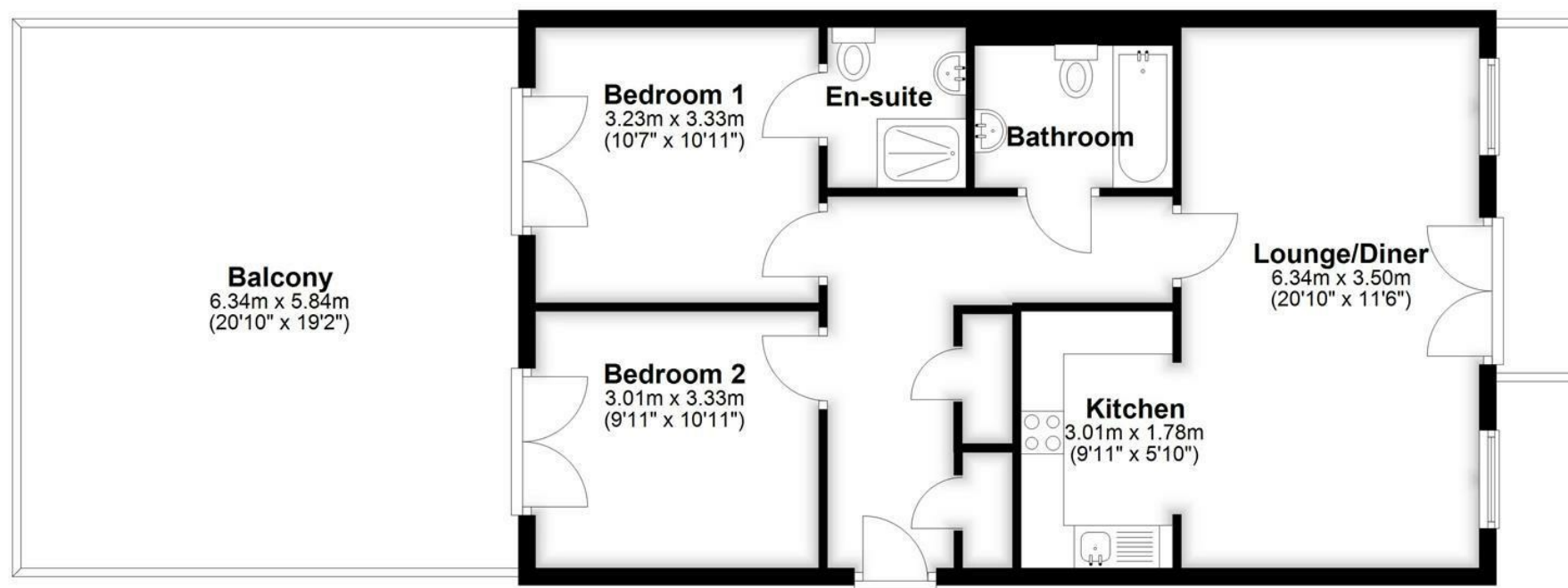


Portishead
Rembrandt House, 36 High Street, Portishead
North Somerset, BS20 6EN
01275 430 440
www.goodmanlilley.co.uk



First Floor

Approx. 70.2 sq. metres (756.0 sq. feet)



Total area: approx. 70.2 sq. metres (756.0 sq. feet)



These particulars are for general guidance only. They do not form or constitute any part of an offer or contract. Goodman & Lilley has not carried out structural surveys of the property. The services, appliances or specific fittings mentioned in these details have not been tested. Every attempt is made to ensure accuracy, however all photographs, measurements, floor plans and distances are for illustrative purposes only. They must not be relied upon when purchasing carpets and or other fixtures and fittings. Lease details, service charges and ground rents are given as a guide only. They should be checked and confirmed by a licensed solicitor prior to exchange of contracts. The copyright of all details, photographs and floor plans remain exclusive to Goodman & Lilley.