



4 Thyme Close, Portishead, BS20 7JU  
Asking Price £250,000

GOODMAN  
& LILLEY



THE INDEPENDENT SALES, LETTINGS & LAND AGENTS

## 4 Thyme Close, Portishead, BS20 7JU

This well presented one bedroom coach house is located on the extremely desirable Village Quarter development.

The accommodation comprises: living/dining area, modern kitchen, cloakroom, double bedroom and bathroom. The property also benefits from a family room and shower downstairs, partial garage storage and allocated parking space.

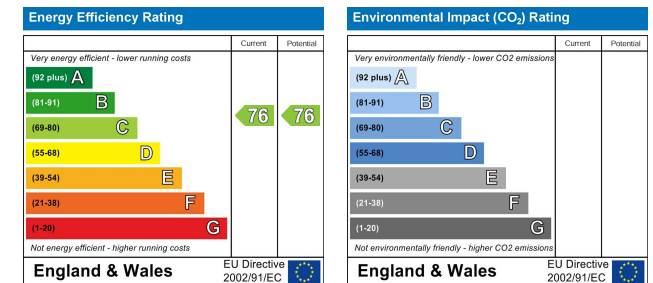
Tenure: Leasehold

Local Authority: North Somerset Council Tel:  
01934 888888

Council Tax Band: B

Services: Water, Electric, Mains Drainage, Gas.

All viewings strictly by appointment with the agent  
Goodman & Lilley 01275 430440



### Portishead

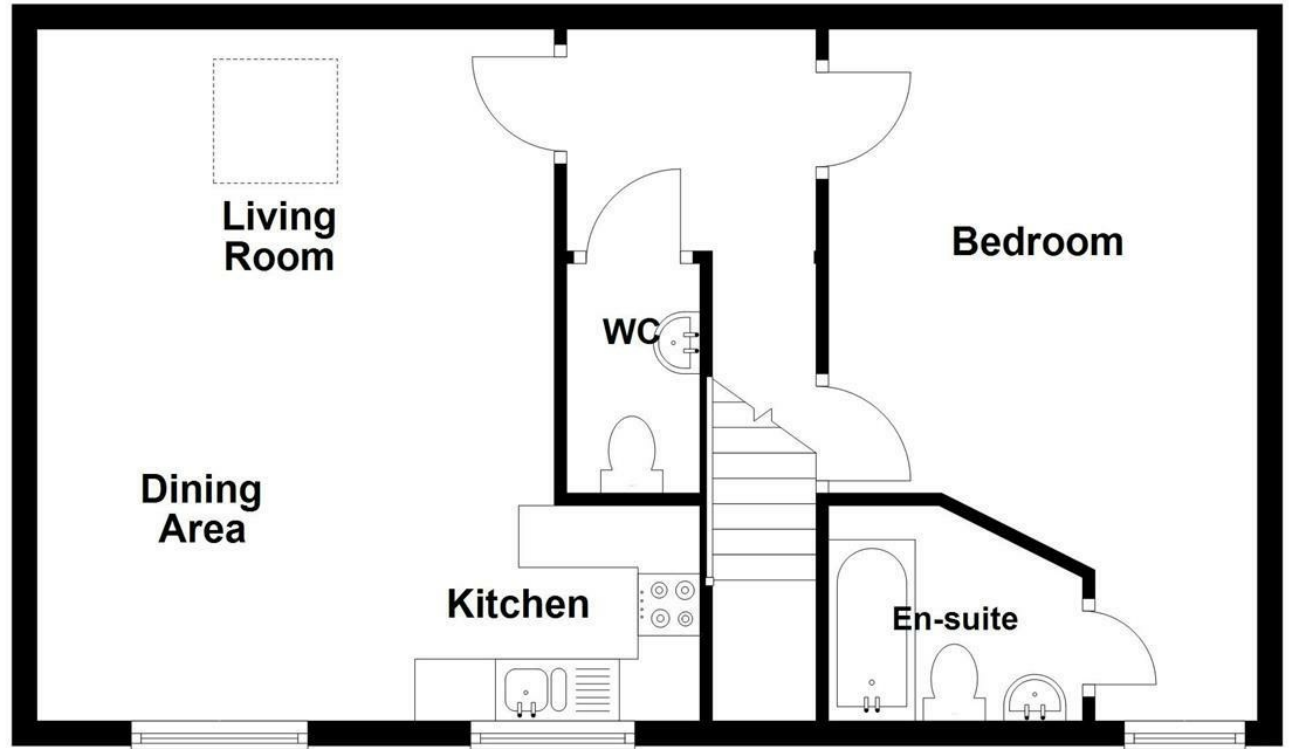
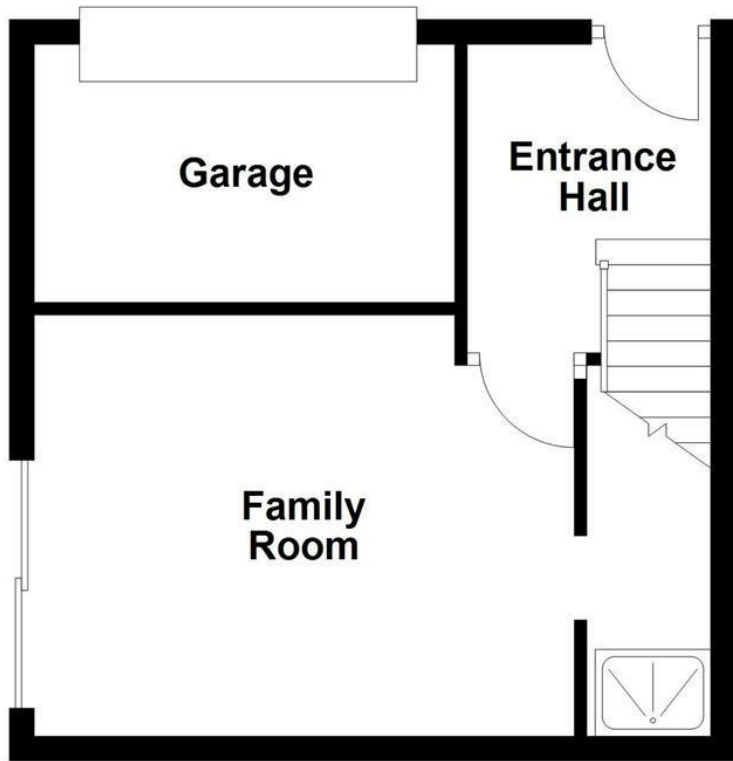
Rembrandt House, 36 High Street, Portishead  
North Somerset, BS20 6EN  
01275 430 440

[www.goodmanlilley.co.uk](http://www.goodmanlilley.co.uk)









These particulars are for general guidance only. They do not form or constitute any part of an offer or contract. Goodman & Lilley has not carried out structural surveys of the property. The services, appliances or specific fittings mentioned in these details have not been tested. Every attempt is made to ensure accuracy, however all photographs, measurements, floor plans and distances are for illustrative purposes only. They must not be relied upon when purchasing carpets and or other fixtures and fittings. Lease details, service charges and ground rents are given as a guide only. They should be checked and confirmed by a licensed solicitor prior to exchange of contracts. The copyright of all details, photographs and floor plans remain exclusive to Goodman & Lilley.