



11 Mizzen Court, Portishead, BS20 7QJ

£299,950

**GOODMAN
& LILLEY**



THE INDEPENDENT SALES, LETTINGS & LAND AGENTS

11 Mizzen Court, Portishead, BS20 7QJ

A bright and airy apartment in the sought-after Mizzen Court. This purpose-built flat offers a delightful open plan living space and 2 bedrooms. One of the highlights of this property is the south-facing roof terrace, where you can enjoy the beautiful Views of the Marina.

With no onward chain, the process of making this lovely apartment your own is made even smoother. Additionally, the convenience of carport parking ensures that you never have to worry about finding a parking spot after a long day at work.

This apartment offers a comfortable living space with modern amenities and a well-thought-out layout. The location in Portishead provides a perfect blend of tranquillity and urban convenience, with easy access to local amenities, schools, and transport links.

- Two bedrooms
- South facing roof terrace
- Open plan living space
- Marina views
- Carport parking
- No onward chain
- Close to Amenities
- Great transport links to central Bristol

Accommodation comprising;

Entrance Hall

A large L shaped entrance hall with doors to all accommodation and a useful storage cupboard with hanging space .

Open plan living space

A light filled dual aspect living space with two windows to the rear one of which is floor to ceiling and glazed double doors opening onto the roof terrace. A spacious living area, the modern kitchen seamlessly blends with the living and dining spaces, whilst wood effect flooring gives a real sense of continuity. A modern high gloss Kitchen fitted with a range of matching wall and

base units, integrated washing machine, fridge freezer, oven, hob and extractor hood. Inset sink and drainer. Two wall mounted radiators, and a large cupboard ideal for storage.

Bedroom One

A double bedroom with a window to the rear of the property, wall mounted radiator and ample space for wardrobes.

Bedroom Two

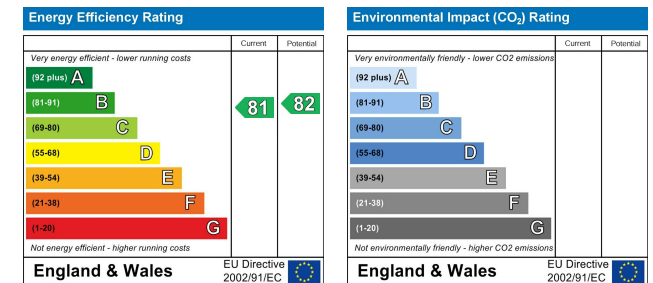
A spacious bedroom with a window to the rear of the building. Radiator.

Bathroom

A modern three piece suite comprising; low level WC, pedestal sink and bath with shower over and glass screen.

Outside

A fantastic outdoor area that is completely private and enjoys all day sun and views towards the marina. The property further boasts the security of a carport parking space.



Portishead

Rembrandt House, 36 High Street, Portishead
North Somerset, BS20 6EN

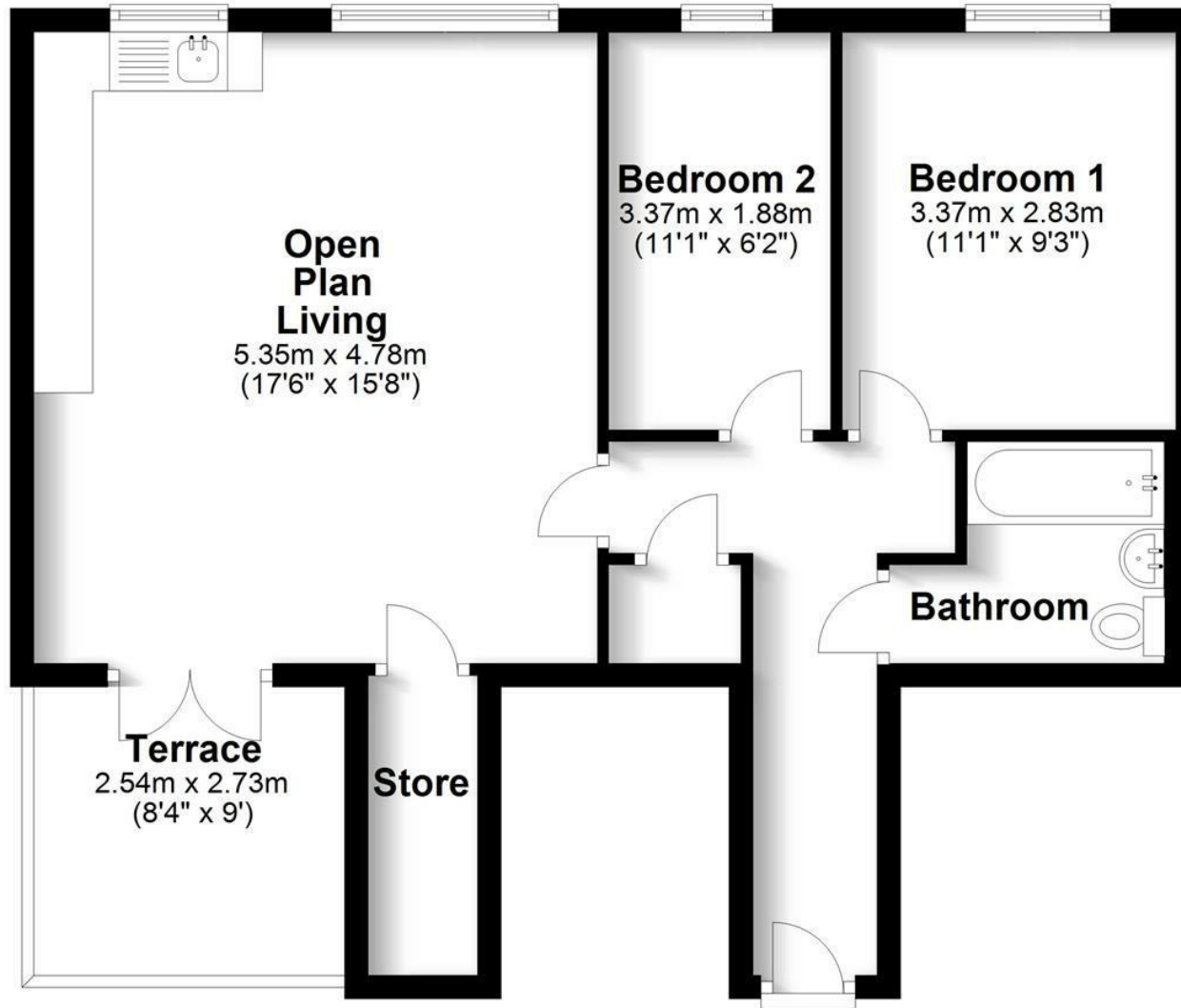
01275 430 440

www.goodmanlilley.co.uk



First Floor

Approx. 57.0 sq. metres (613.2 sq. feet)



Total area: approx. 57.0 sq. metres (613.2 sq. feet)



These particulars are for general guidance only. They do not form or constitute any part of an offer or contract. Goodman & Lilley has not carried out structural surveys of the property. The services, appliances or specific fittings mentioned in these details have not been tested. Every attempt is made to ensure accuracy, however all photographs, measurements, floor plans and distances are for illustrative purposes only. They must not be relied upon when purchasing carpets and or other fixtures and fittings. Lease details, service charges and ground rents are given as a guide only. They should be checked and confirmed by a licensed solicitor prior to exchange of contracts. The copyright of all details, photographs and floor plans remain exclusive to Goodman & Lilley.