



34 Adlington House Slade Road, Portishead, BS20 6BB  
Guide Price £175,000

GOODMAN  
& LILLEY



THE INDEPENDENT SALES, LETTINGS & LAND AGENTS

## 34 Adlington House Slade Road, Portishead, BS20 6BB

A fantastic Second floor apartment with dual aspect windows overlooking the mature lush rear communal gardens. The property is offered with no onward chain and boasts a modern separate kitchen, walk in shower and private balcony.

- Retirement apartment
- Dual aspect lounge
- Fantastic outlook
- Separate kitchen
- Private balcony
- Great condition
- No onward chain

### Accommodation comprising;

#### Communal entrance

A secure communal entrance opens into the communal dining hall with access to the lifts and stairs to all floors.

#### Apartment entrance

A spacious entrance hall with wider width doors for easy access. Doors to the living room, walk in shower room, large double bedroom, living space and utility cupboard housing the boiler.

#### Living room

Flooded with natural light, the lounge has a window to the side aspect overlooking the communal gardens and glazed double doors overlooking and opening onto the balcony with garden views. A feature fireplace provides a focal point and a door opens into the kitchen.

#### Kitchen

A modern kitchen is fitted with a range of matching wall and base units, eye level oven, integrated sink and fridge freezer. A window offers a pleasant view of the communal gardens

#### Bedroom

A large double bedroom with built in double wardrobe and a window overlooking the communal rear gardens.

#### Wet Room

Fitted with a three piece suite comprising; low level WC with concealed cistern, pedestal wash hand basin, and walk in shower area, fully tiled, heated towel rail, recessed ceiling down lighting, extractor fan.

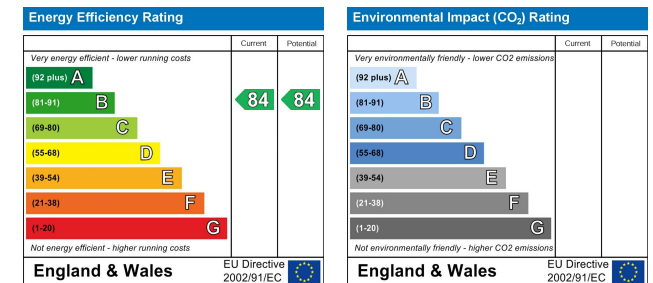
#### Adlington House

When you purchase an Adlington home you will have access to round the clock support from a dedicated team of specialists. Whatever your needs, the 24 hour on site staff are there to look out for your wellbeing, offering tailored support that enables you to maintain your quality of life. It's completely flexible, so should you find that your requirements change in the future, MHA's discreet care team will be able to accommodate and support you.

All apartments are fitted with a 24 hour emergency call system linked directly to the on site care team.

Even though you may not feel in need of care at the moment, the support is always there in the background giving you and your family comfort that in the event of an unexpected trip or fall help would be immediately to hand. This sophisticated call system not only covers your own private apartment but the entire building and gardens, for added peace of mind.

The personal approach to care ensures that you receive just the right amount to maintain your independence, allowing you to enjoy your retirement to the full.



### Portishead

Rembrandt House, 36 High Street, Portishead  
North Somerset, BS20 6EN

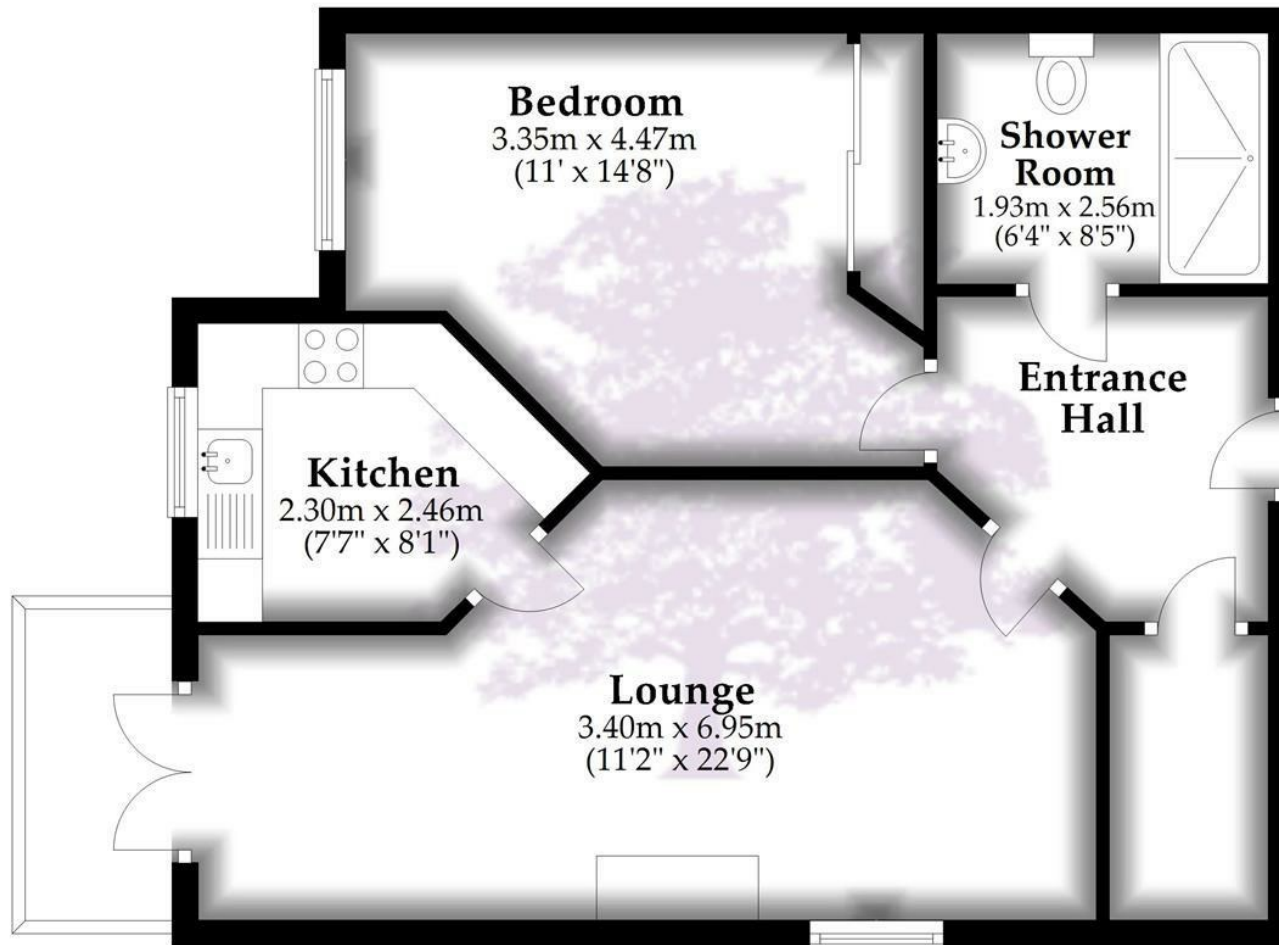
01275 430 440

[www.goodmanlilley.co.uk](http://www.goodmanlilley.co.uk)



## Second Floor

Approx. 54.1 sq. metres (582.3 sq. feet)



Total area: approx. 54.1 sq. metres (582.3 sq. feet)

Whilst every attempt has been made to ensure accuracy of the floor plan all measurements are approximate and no responsibility is taken for any error, omission or measurement.

Plan produced using PlanUp.



These particulars are for general guidance only. They do not form or constitute any part of an offer or contract. Goodman & Lilley has not carried out structural surveys of the property. The services, appliances or specific fittings mentioned in these details have not been tested. Every attempt is made to ensure accuracy, however all photographs, measurements, floor plans and distances are for illustrative purposes only. They must not be relied upon when purchasing carpets and or other fixtures and fittings. Lease details, service charges and ground rents are given as a guide only. They should be checked and confirmed by a licensed solicitor prior to exchange of contracts. The copyright of all details, photographs and floor plans remain exclusive to Goodman & Lilley.