



Willow Vale, Shepherd's
Bush

£3,100 Per Month



4



1



null



jt

Willow Vale, Shepherd's Bush

£3,100 Per Month



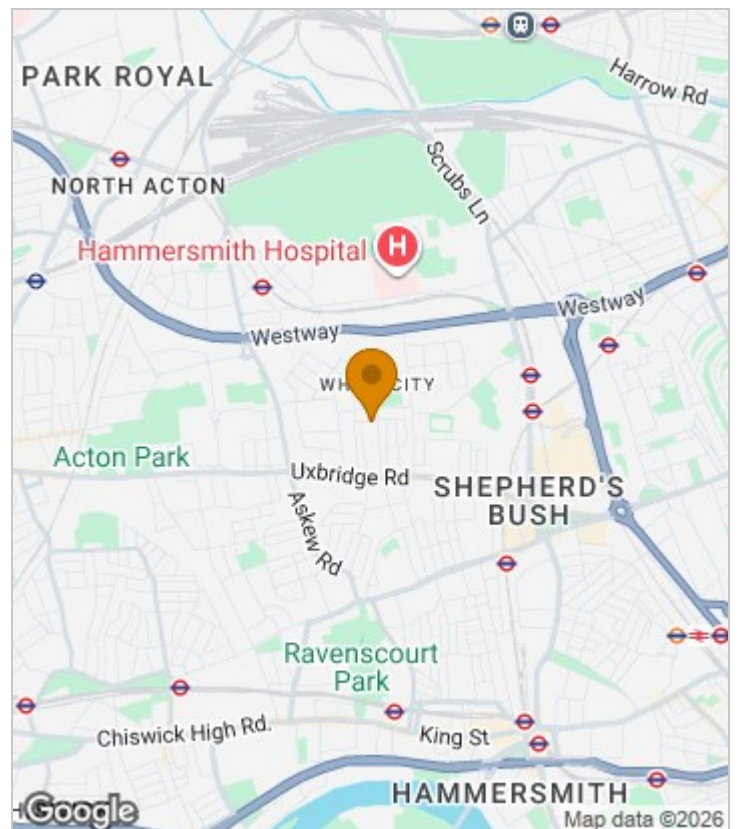
Summary Description

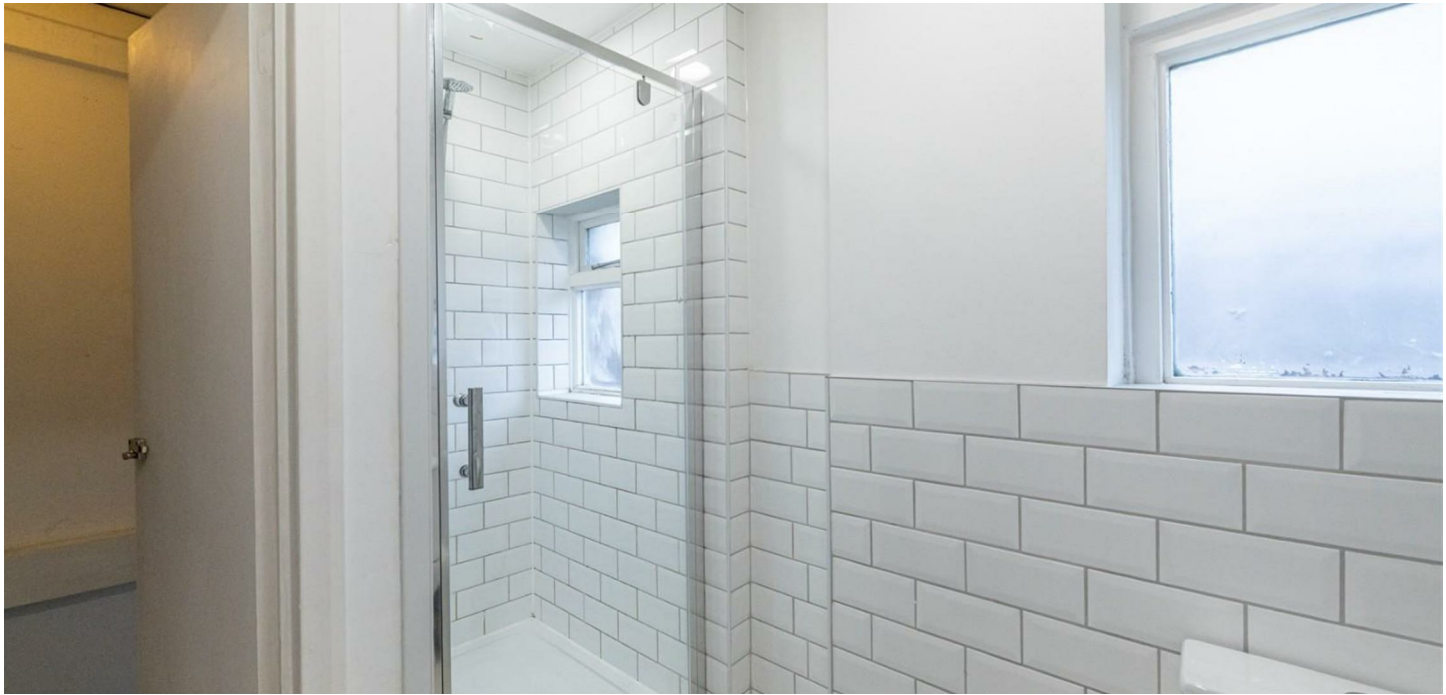
**** NEW TO THE MARKET**** Jorgensen turner are pleased to offer this spacious four bedroom maisonette with private garden on a lovely road in "The Groves". Perfect for sharers or a family, this property has versatile space throughout and it's own front door.

Recently refurbished this property has a modern kitchen/ diner and shower room. Available NOW and offered unfurnished.

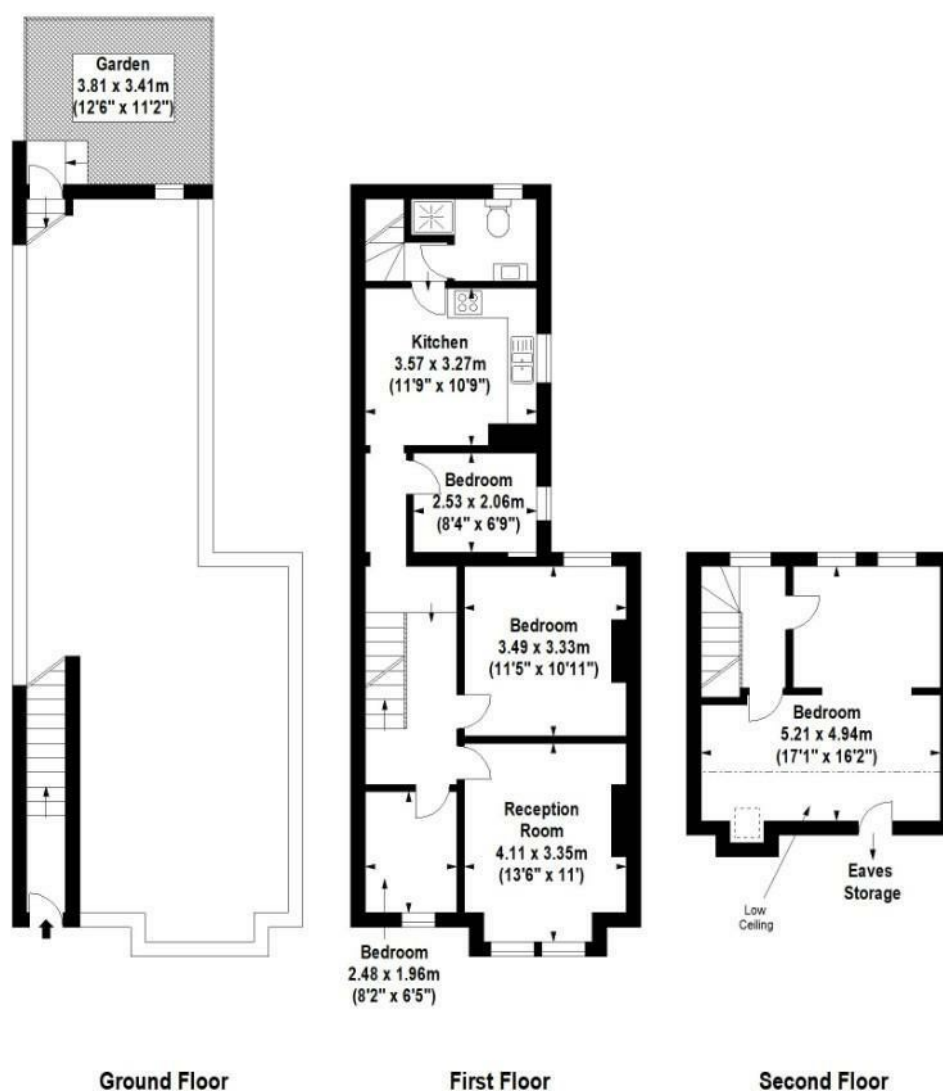
A holding deposit of 1 weeks rent will be required to secure the property and a Security deposit of 5 weeks rent (for rents under £50,000 pa) or 6 weeks (for rents over £50,000 pa)

Area Map





Floor Plan



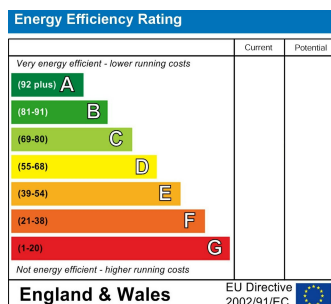
For Identification Purposes Only. Not To Scale. © www.totalvista.uk 2026

Willow Vale, W12

Approx. Gross Internal Area
97.73 Sq M - 1052 Sq Ft

TOTALVISTA

Energy Efficiency Graph



Viewing

Please contact our Lettings SB Office on 0208 740 8740 if you wish to arrange a viewing appointment for this property or require further information.

- Four bedroom maisonette
- Private garden
- Unfurnished
- Available now
- Open to sharers and families
- Quiet residential road
- Versatile living space
- Close to multiple transport links

For further information contact:

Lettings SB, 234 Uxbridge Road, Shepherds Bush, London, W12 7JD

Tel: 0208 740 8740 Email: enquiries@jorgensenturner.com

<https://www.jorgensenturner.com/>

Disclaimer

These particulars, whilst believed to be accurate are set out as a general outline only for guidance and do not constitute any part of an offer or contract. Intending purchasers should not rely on them as statements of representation of fact, but must satisfy themselves by inspection or otherwise as to their accuracy. No person in this firm's employment has the authority to make or give any representation or warranty in respect of the property.