



**Uxbridge Road, Shepherds
Bush, London, W12**

£1,500 Per Month

jo



1



1



1



C

jo

Uxbridge Road, Shepherds Bush, London, W12

£1,500 Per Month



Summary Description

****NEW TO MARKET**** Jorgensen Turner Estate Agents proudly present this charming top-floor apartment, newly available to the market.

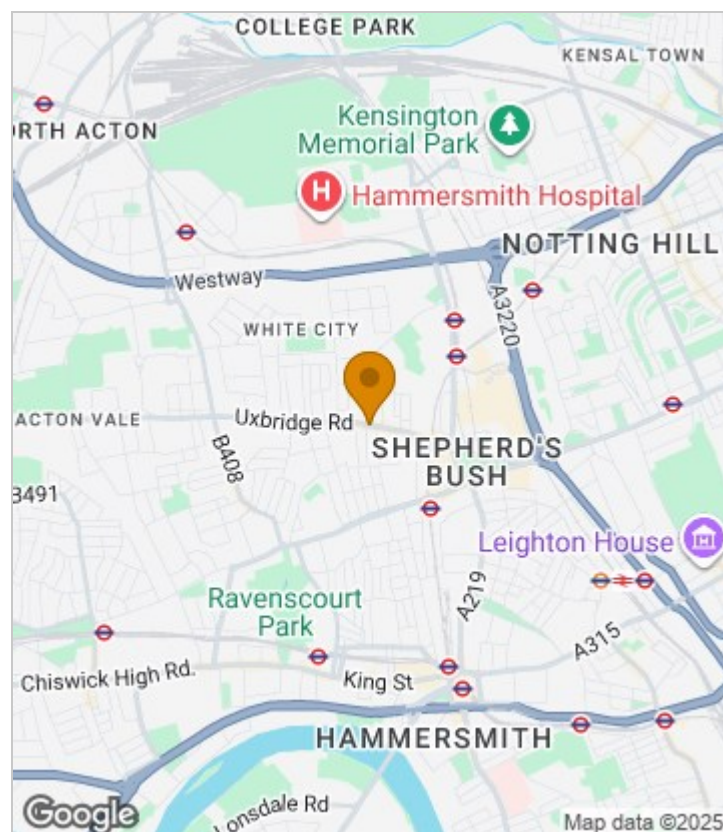
The apartment spans 366sqft and is bathed in natural light, featuring a bright and airy bedroom with skylights. At the heart of this home is its compact yet functional open-plan kitchen, equipped with sleek wooden cabinetry and modern appliances, seamlessly flowing into the living area, ideal for both cosy nights in and intimate gatherings. The fully tiled bathroom offers essential fittings, ensuring comfort and convenience.

Maximising space with integrated storage solutions, the apartment combines a mix of carpeted and wood-effect laminate flooring, adding both warmth and practicality. Nestled in the vibrant White City neighbourhood, this property offers a peaceful retreat, situated above local shops and within easy reach of major attractions like Westfield London, the historic Television Centre, and serene parks. With excellent connectivity via nearby Underground stations and major roads, this apartment is a unique and appealing find. The property is offered furnished while still providing scope for personalisation. Available end of October.

Council Tax Band B—Hammersmith and Fulham.

Deposit: One weeks' rent to reserve, with a security deposit of either 5 weeks' rent (for properties under £50,000pa) or 6 weeks' rent (for those over £50,000pa).

Area Map



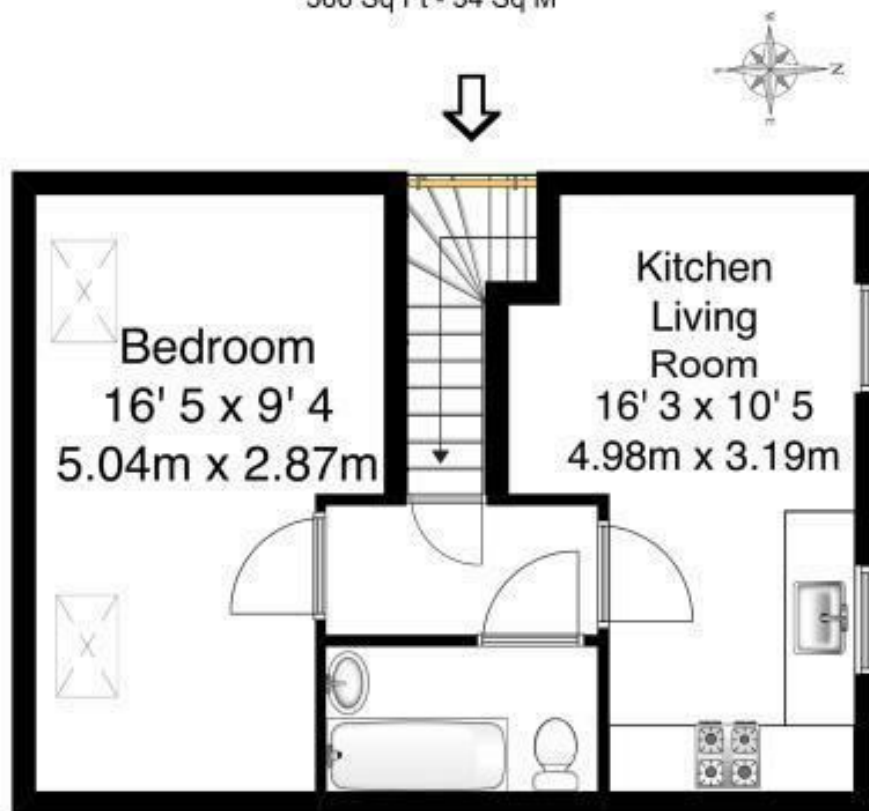


Floor Plan

Uxbridge Road W12

Approx Gross Internal Area

366 Sq Ft - 34 Sq M

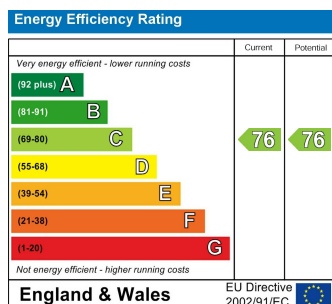


Top floor



Whilst every attempt has been made to ensure the accuracy of the floor plan contained here, measurements are approximate and no responsibility is taken for any error, omission, or mis-statement. The plan is for illustrative purposes only and should be used as such by any prospective purchaser.

Energy Efficiency Graph



Viewing

Please contact our Lettings SB Office on 0208 740 8740 if you wish to arrange a viewing appointment for this property or require further information.

- ONE BEDROOM FLAT
- OPEN-PLAN KITCHEN
- LARGE BEDROOM
- STORAGE
- EXCELLENT TRANSPORT
- TOP FLOOR FLAT
- FURNISHED
- WORK FROM HOME SPACE
- PRIME LOCATION

For further information contact:

Lettings SB, 234 Uxbridge Road, Shepherds Bush, London, W12 7JD

Tel: 0208 740 8740 Email: enquiries@jorgensenturner.com

<https://www.jorgensenturner.com/>

Disclaimer

These particulars, whilst believed to be accurate are set out as a general outline only for guidance and do not constitute any part of an offer or contract. Intending purchasers should not rely on them as statements of representation of fact, but must satisfy themselves by inspection or otherwise as to their accuracy. No person in this firm's employment has the authority to make or give any representation or warranty in respect of the property.

