

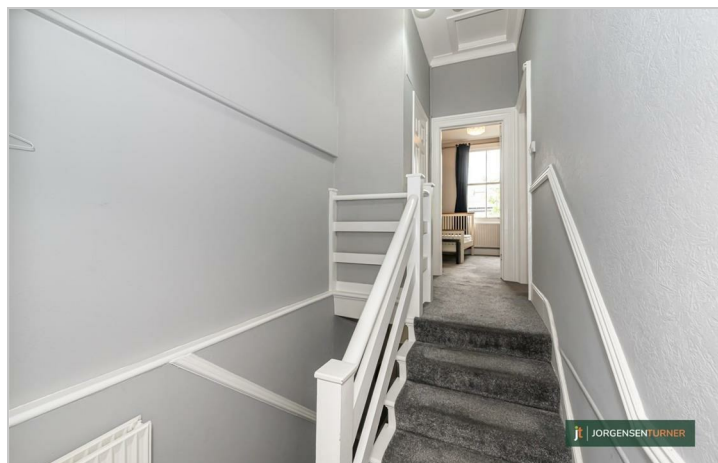


Becklow Road, Shepherds
Bush, W12

£1,895

Becklow Road, Shepherds Bush, W12

£1,895



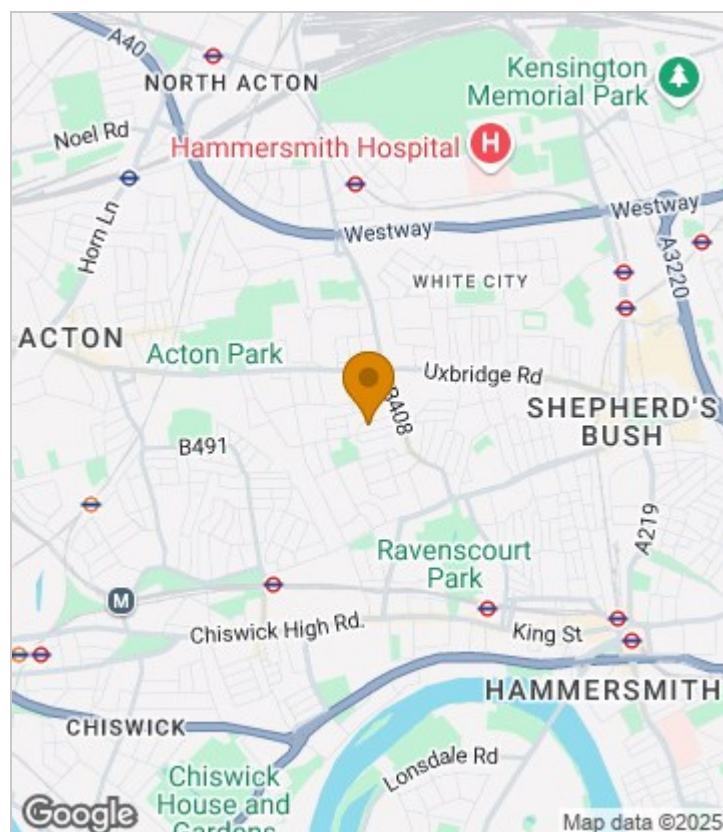
Summary Description

**** GREAT VALUE **** Jorgensen Turner estate agents are delighted to present this for two double bedroom flat in the heart of Askew village. This well presented property comprises of two equal sized double bedrooms, a spacious reception room, a separate kitchen and a bathroom. Located on a quiet residential road the property also benefits from being just a short walk from all the amenities on the Askew Road. The flat is offered part-furnished and is available immediately, early viewings are highly recommended.

Council Tax Band C—Hammersmith & Fulham.

Deposit: One weeks' rent to reserve, with a security deposit of either 5 weeks' rent (for properties under £50,000pa) or 6 weeks' rent (for those over £50,000pa).

Area Map

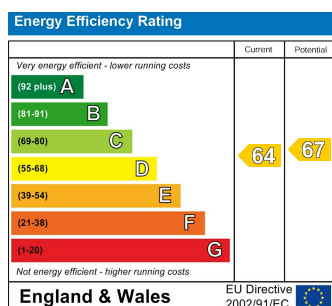




Floor Plan



Energy Efficiency Graph



Viewing

Please contact our Lettings SB Office on 0208 740 8740 if you wish to arrange a viewing appointment for this property or require further information.

- TWO DOUBLE BEDROOMS
- AVAILABLE NOW
- FIRST FLOOR FLAT
- COUNCIL TAX BAND C
- FURNISHED
- ASKEW VILLAGE
- CALL AGENT FOR A VIDEO/ MORE PHOTOS AVAILABLE

For further information contact:

Lettings SB, 234 Uxbridge Road, Shepherd's Bush, London, W12 7JD

Tel: 0208 740 8740 Email: enquiries@jorgensenturner.com

<https://www.jorgensenturner.com/>

Disclaimer

These particulars, whilst believed to be accurate are set out as a general outline only for guidance and do not constitute any part of an offer or contract. Intending purchasers should not rely on them as statements of representation of fact, but must satisfy themselves by inspection or otherwise as to their accuracy. No person in this firm's employment has the authority to make or give any representation or warranty in respect of the property.

