




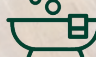


jt | JORGENSENTURNER



Boscombe Road, London

£2,500 Per Month



jt |  2  2  1  D jt

Boscombe Road, London

£2,500 Per Month



Summary Description

Jorgensen Turner Estate Agents are delighted to introduce this exceptional period conversion property, ideally nestled in the vibrant yet peaceful Boscombe Road, W12. This expansive 1,181sqft residence masterfully combines the elegance of modern living with the convenience of urban lifestyle, surrounded by the lush scenery of Cathnor Park and the dynamic atmosphere of Shepherd's Bush Green.

This property features two generously sized bedrooms and two well-appointed bathrooms all seamlessly joined by elegant wood flooring and cosy carpeting in the bedrooms. The heart of this home is its spacious reception room, which flows seamlessly into a contemporary, fully-equipped open-plan kitchen and dining area – perfect for hosting social get-togethers or enjoying intimate dinners.

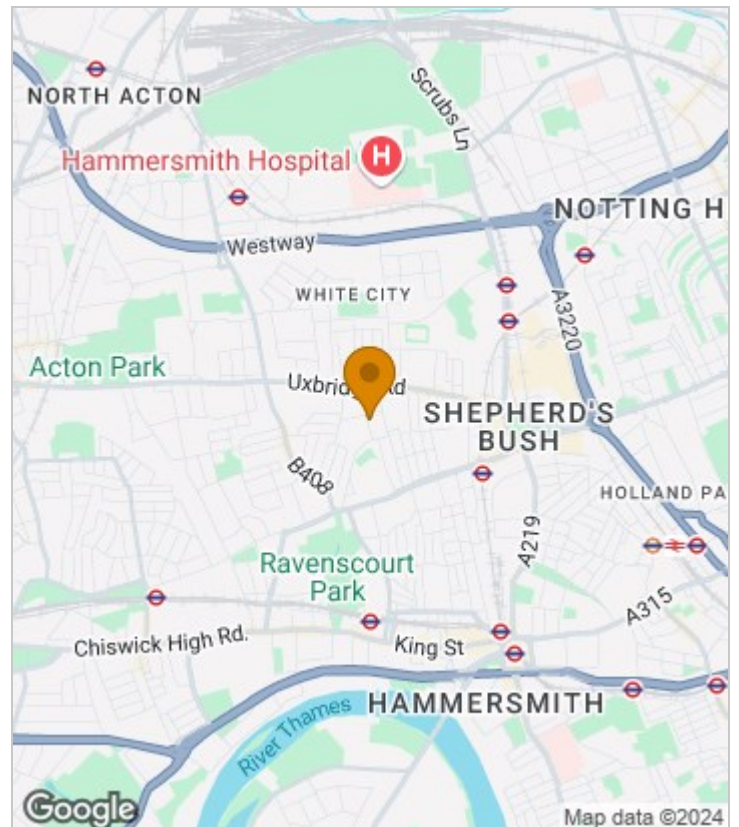
Located on the lower level you'll find the two bedrooms and a family bathroom, each thoughtfully designed for comfort and style.

Well-maintained and ideally suited for sharers or couples, this property presents a rare blend of traditional character and modern amenities. Set within a dynamic London neighbourhood, this home is not just a living space but a statement of lifestyle. The property is available furnished from mid/late-October.

Council Tax Band E—Hammersmith & Fulham.

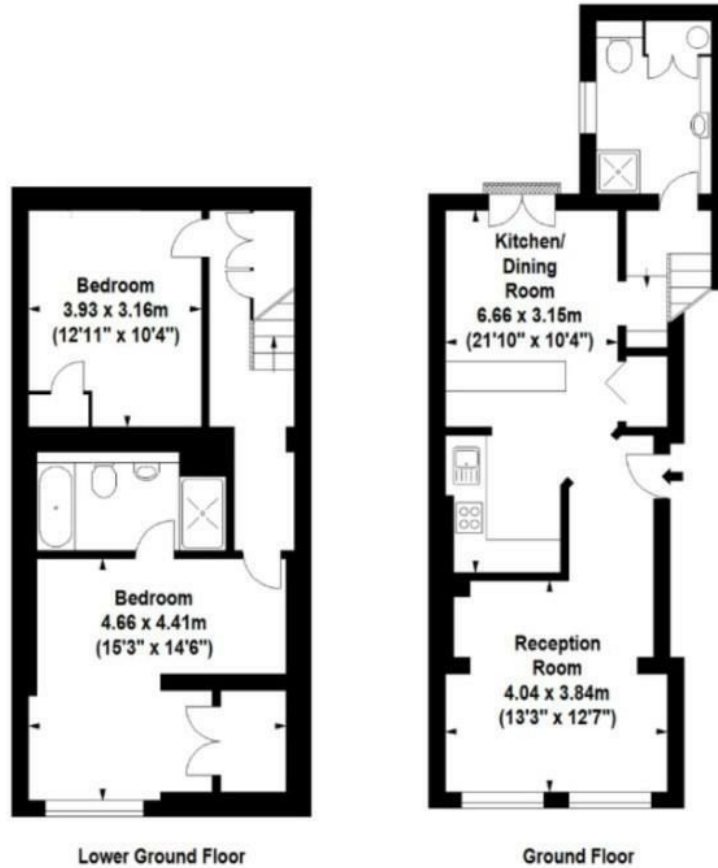
Deposit: One weeks' rent to reserve, with a security deposit of either 5 weeks' rent (for properties under £50,000pa) or 6 weeks' rent (for those over £50,000pa).

Area Map





Floor Plan



For Identification Purposes Only. Not To Scale. © www.totalvista.uk 2022

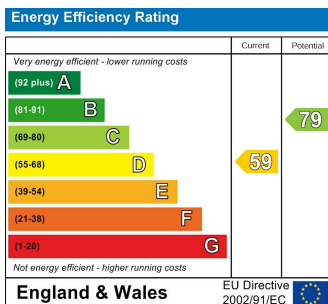


Boscombe Road, W12

Approx. Gross Internal Area
108.32 Sq M - 1166 Sq Ft



Energy Efficiency Graph



Viewing

Please contact our Lettings SB Office on 0208 740 8740 if you wish to arrange a viewing appointment for this property or require further information.

- PEACEFUL LOCATION
- BEAUTIFUL PERIOD CONVERSION
- TWO GENEROUSLY SIZED BEDROOMS
- SPACIOUS OPEN DINE-IN KITCHEN
- OVER 1,180sqft OF LIVING SPACE
- SURROUNDED BY LUSH GREENERY
- TWO INDIVIDUAL BATHROOMS
- AVAILABLE MID/END-OCTOBER

For further information contact:

Lettings SB, 234 Uxbridge Road, Shepherds Bush, London, W12 7JD

Tel: 0208 740 8740 Email: enquiries@jorgensenturner.com

<https://www.jorgensenturner.com/>

Disclaimer

These particulars, whilst believed to be accurate are set out as a general outline only for guidance and do not constitute any part of an offer or contract. Intending purchasers should not rely on them as statements of representation of fact, but must satisfy themselves by inspection or otherwise as to their accuracy. No person in this firm's employment has the authority to make or give any representation or warranty in respect of the property.