

Shepherds Court
Shepherds Bush Green,
£2,200 Per Month



Shepherds Court Shepherds Bush Green, £2,200 Per Month



Summary Description

Jorgensen Turner Estate Agents proudly present this beautiful apartment newly available to the market. This two-bedroom property stands out with its panoramic views of both the vibrant Shepherd's Bush cityscape and nearby greenery, adding a touch of history to urban living.

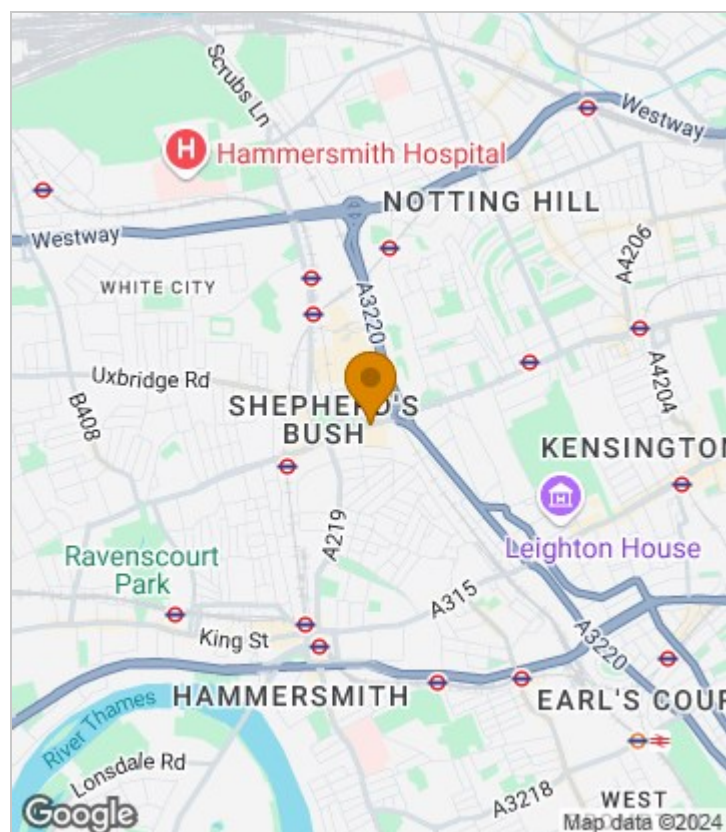
The apartment showcases a high standard of presentation throughout, with a focus on modern and practical living. At the heart of this home is its bright reception room, featuring large windows that flood the space with natural light—perfect for relaxation or entertaining guests. The modern galley-style kitchen boasts sleek white cabinetry, ample storage, and modern appliances, accompanied by an adjacent dining area ideal for casual meals. Both bedrooms are generously sized; the master includes built-in mirrored wardrobes for ample storage, while the second bedroom offers flexible use as a guest room or home office. The centrally located bathroom features a bathtub with a shower overhead and modern fixtures, ensuring convenience for residents and guests alike.

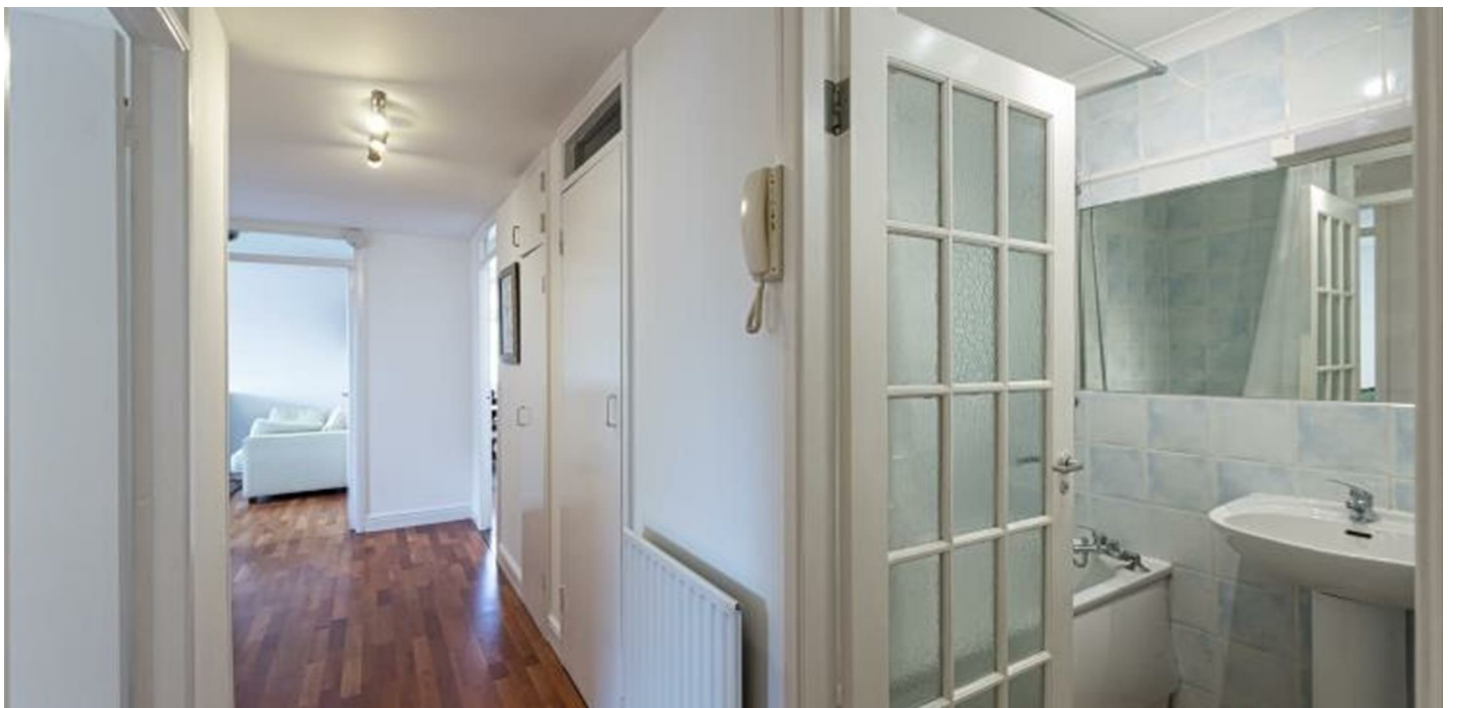
Settled just moments from Westfield London, Shepherd's Bush Empire, and excellent transport links via Underground (Central, Circle, Hammersmith & City Lines), Overground, and the A40, this property offers urban convenience in a dynamic yet community-focused area. It's ideally situated for easy access to diverse amenities and the hustle and bustle of city life, while also providing a peaceful escape above it all. The apartment is offered unfurnished, providing a blank canvas for personalisation, and is available early Oct.

Council Tax Band B—Hammersmith & Fulham

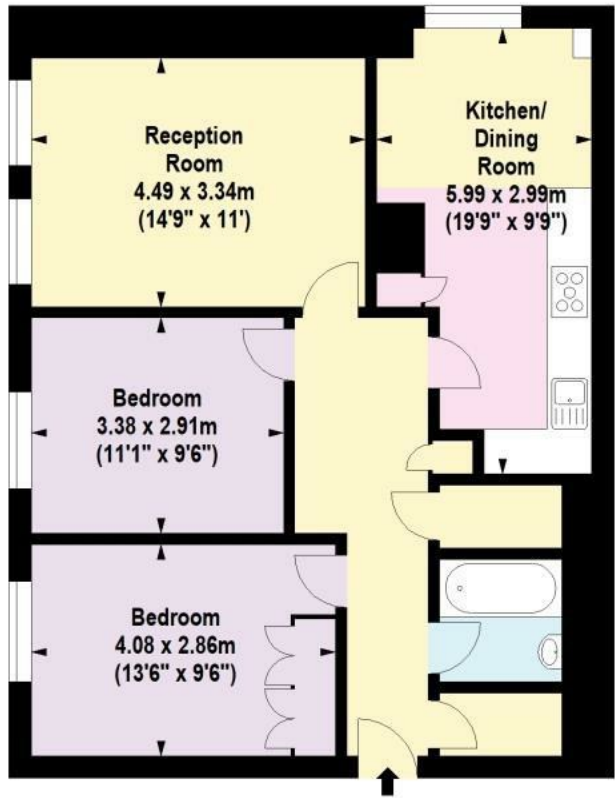
Deposit: One weeks' rent to reserve, with a security deposit of either 5 weeks' rent (for properties under £50,000pa) or 6 weeks' rent (for those over £50,000pa).

Area Map





Floor Plan



Twelfth Floor



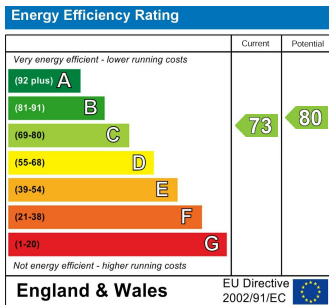
For Identification Purposes Only. Not To Scale. © www.totalvista.uk 2022

Shepherds Court, W12

Approx. Gross Internal Area
70.42 Sq M - 758 Sq Ft



Energy Efficiency Graph



Viewing

Please contact our Lettings SB Office on 0208 740 8740 if you wish to arrange a viewing appointment for this property or require further information.

- PANORAMIC VIEWS OF CITY
- BRIGHT RECEPTION ROOM
- ADJACENT DINING AREA
- BUILT-IN WARDROBES
- PRIME LOCATION
- GOOD FINISH THROUGHOUT
- GALLEY STYLE KITCHEN
- GENEROUSLY SIZED BEDROOMS
- MODERN BATHROOM
- EXCELLENT TRANSPORT LINKS

For further information contact:

Lettings SB, 234 Uxbridge Road, Shepherds Bush, London, W12 7JD

Tel: 0208 740 8740 Email: enquiries@jorgensenturner.com

<https://www.jorgensenturner.com/>

Disclaimer

These particulars, whilst believed to be accurate are set out as a general outline only for guidance and do not constitute any part of an offer or contract. Intending purchasers should not rely on them as statements of representation of fact, but must satisfy themselves by inspection or otherwise as to their accuracy. No person in this firm's employment has the authority to make or give any representation or warranty in respect of the property.

