

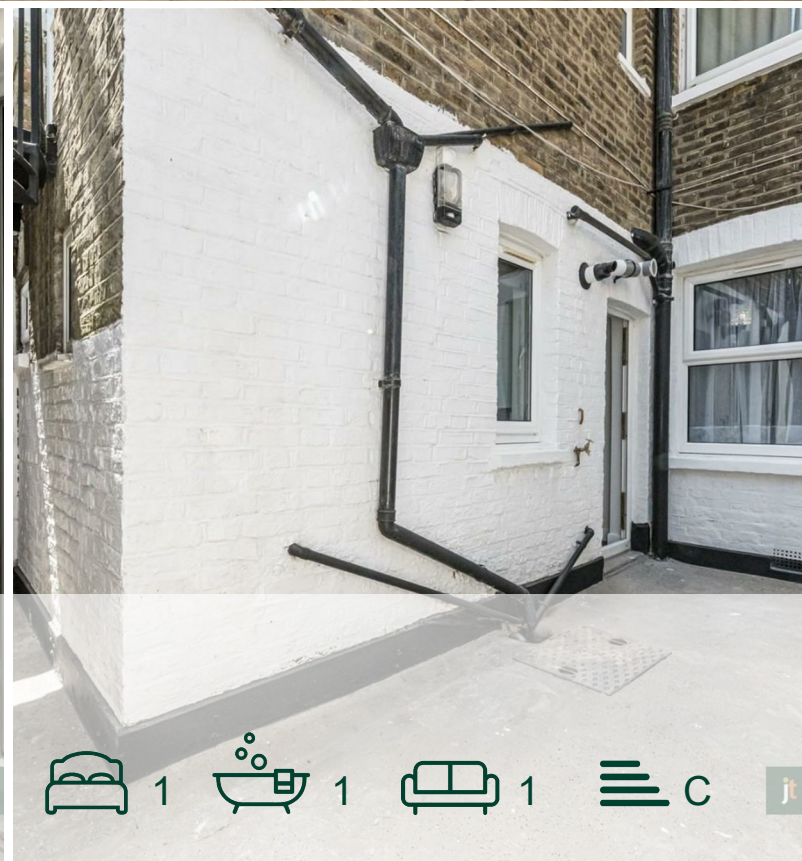


jt | JORGENSENTURNER



Sulgrave Road, London

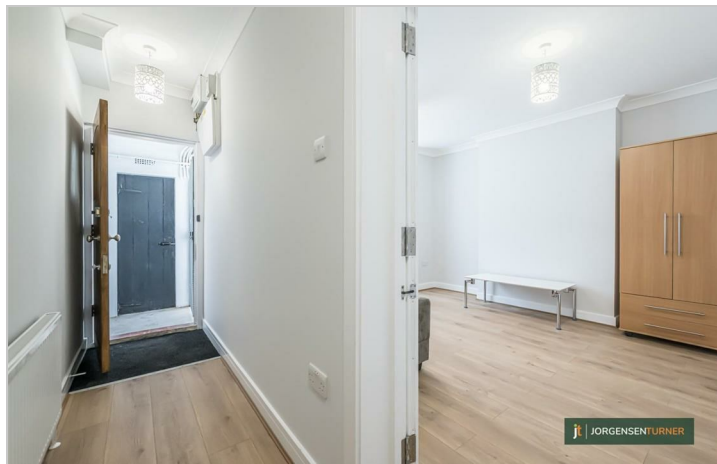
£2,000 Per Month



1 1 1 C

# Sulgrave Road, London

£2,000 Per Month



## Summary Description

Jorgensen Turner Estate Agents are delighted to introduce this charming Victorian apartment, now available on the market. This one-bedroom property stands out with its direct access to a private courtyard-style patio, offering a peaceful retreat from the vibrant city life.

The apartment is beautifully presented throughout, blending classic architectural elegance with modern living comforts. At its heart lies a spacious reception room with light wood flooring and a large bay window, creating a bright and airy atmosphere. The sleek, elongated kitchen at the rear of the property is designed with high-gloss white cabinetry, light wood countertops, and contemporary appliances, complemented by a cosy dining area.

A generously sized bedroom features efficient built-in storage, with a modern bathroom next to the kitchen area. Additional storage is provided through a small external vault near the entrance, ensuring a clutter-free living space.

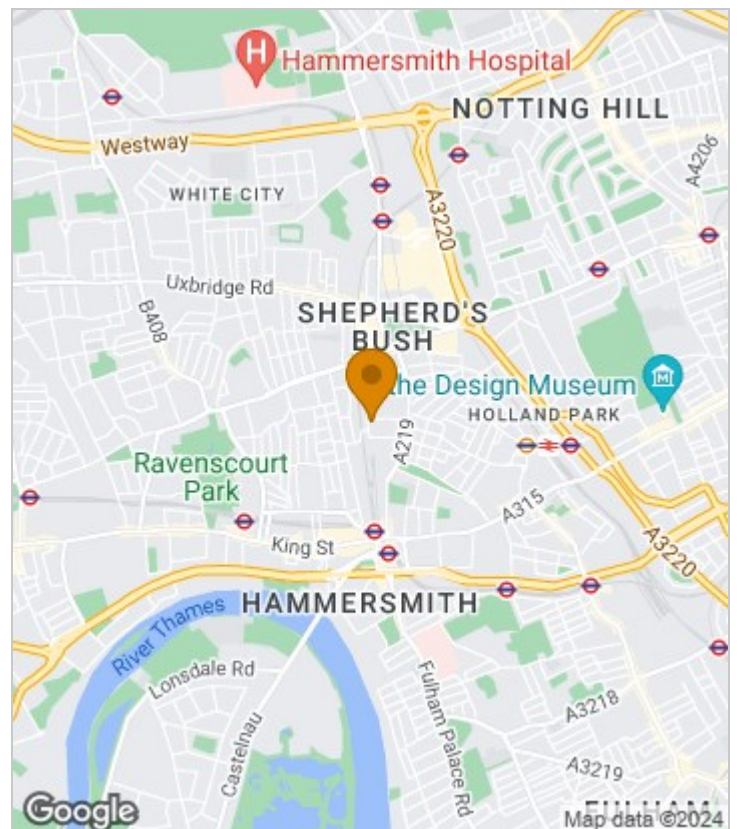
Situated on Sulgrave Road, this apartment enjoys a prime location within a vibrant neighbourhood. Residents benefit from immediate access to green spaces like Ravenscourt Park and Brook Green, as well as a diverse selection of shopping and dining options along King Street. Esteemed cultural venues, including the Lyric Hammersmith Theatre and Hammersmith Apollo, are also within easy reach.

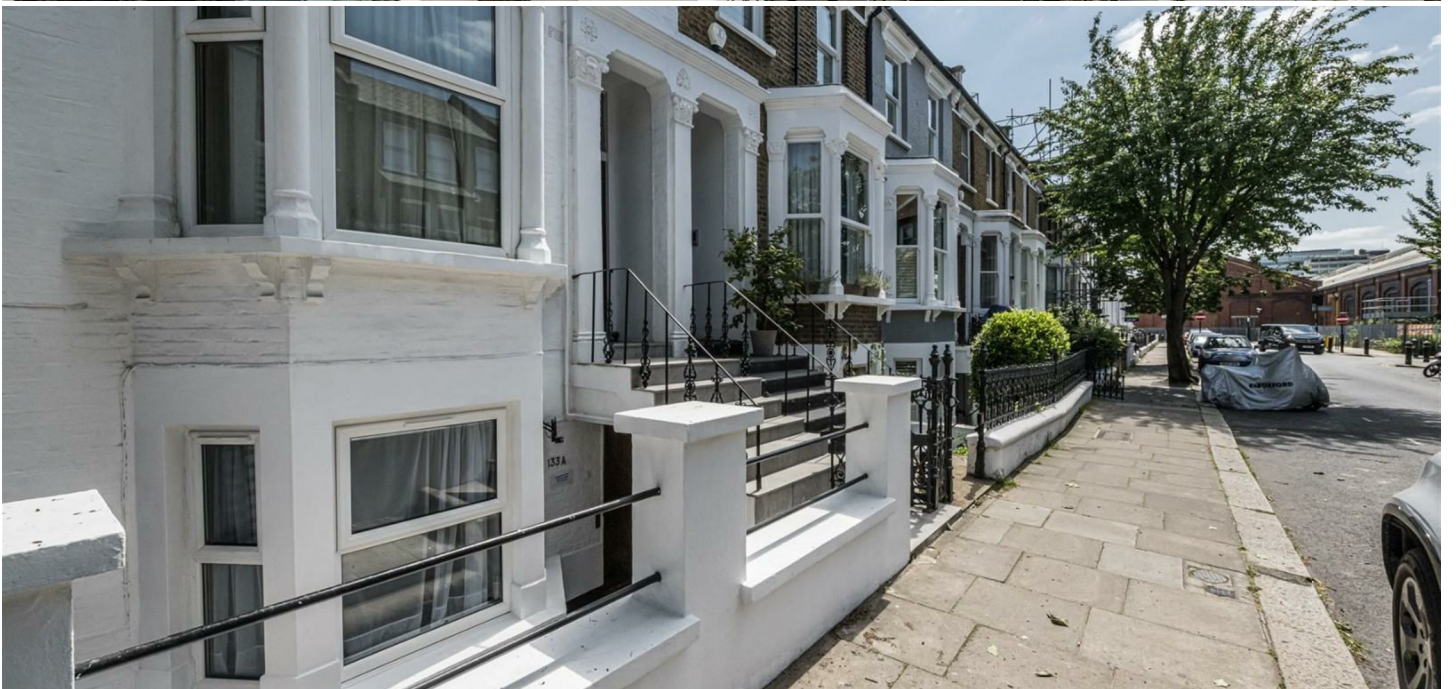
The property is ideally positioned for excellent transport links, with Hammersmith Station offering multiple Underground lines for swift travel across London, including direct routes to central destinations and Heathrow Airport. Offered on a furnished basis, this move-in ready apartment provides a stylish and functional urban living experience in one of London's most desirable areas.

Council Tax Band D—Hammersmith & Fulham

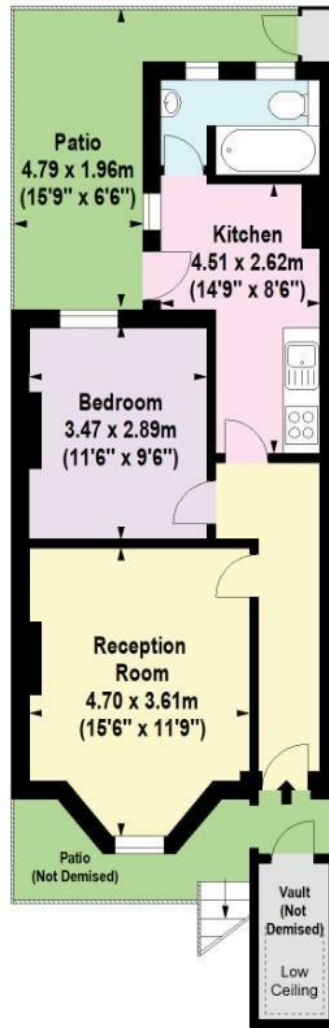
Deposit: One weeks' rent to reserve, with a security deposit of either 5 weeks' rent (for properties under £50,000pa) or 6 weeks' rent (for those over £50,000pa).

## Area Map





# Floor Plan



Lower Ground Floor

For Identification Purposes Only. Not To Scale. © www.totalvista.uk 2023

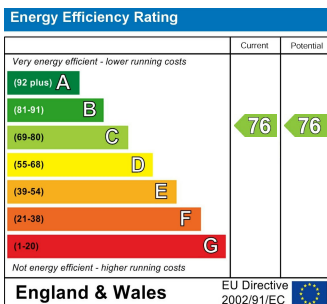


Sulgrave Road, W6

Approx. Gross Internal Area  
47.01 Sq M - 506 Sq Ft



## Energy Efficiency Graph



## Viewing

Please contact our Lettings SB Office on 0208 740 8740 if you wish to arrange a viewing appointment for this property or require further information.

- CHARMING VICTORIAN ARCHITECTURE
- PRIVATE COURTYARD
- RECEPTION WITH BAY WINDOW
- INVITING DINING SPACE
- CONTEMPORARY BATHROOM
- PRIME LOCATION
- KITCHEN WITH MODERN FINISHES
- GENEROUSLY SIZED BEDROOM
- EXTERNAL VAULT STORAGE
- GREAT TRANSPORT CONNECTIONS

For further information contact:

Lettings SB, 234 Uxbridge Road, Shepherds Bush, London, W12 7JD

Tel: 0208 740 8740 Email: [enquiries@jorgensenturner.com](mailto:enquiries@jorgensenturner.com)

<https://www.jorgensenturner.com/>

### Disclaimer

These particulars, whilst believed to be accurate are set out as a general outline only for guidance and do not constitute any part of an offer or contract. Intending purchasers should not rely on them as statements of representation of fact, but must satisfy themselves by inspection or otherwise as to their accuracy. No person in this firm's employment has the authority to make or give any representation or warranty in respect of the property.

