



Charleville Road, London

£1,950 Per Month



1



1



1



E



# Charleville Road, London

£1,950 Per Month



## Summary Description

Jorgensen Turner Estate Agents proudly present this charming apartment newly available to the market on Charleville Road, W14. The apartment showcases a high standard of presentation throughout, focusing on comfort and practicality. At the heart of this home is its cosy living area, designed to be a welcoming and escape from the busy city life, with carpeted flooring, a decorative fireplace, and large windows that flood the space with natural light. Accompanying this is a compact yet functional kitchen, featuring wooden countertops and modern appliances.

The bedroom is bright and inviting, complete with a large built-in wardrobe, while the neatly designed bathroom offers a bathtub and pedestal sink, ensuring comfort and convenience for tenants. The building's exterior, a striking red brick with white-painted sections, provides a timeless appearance to the property.

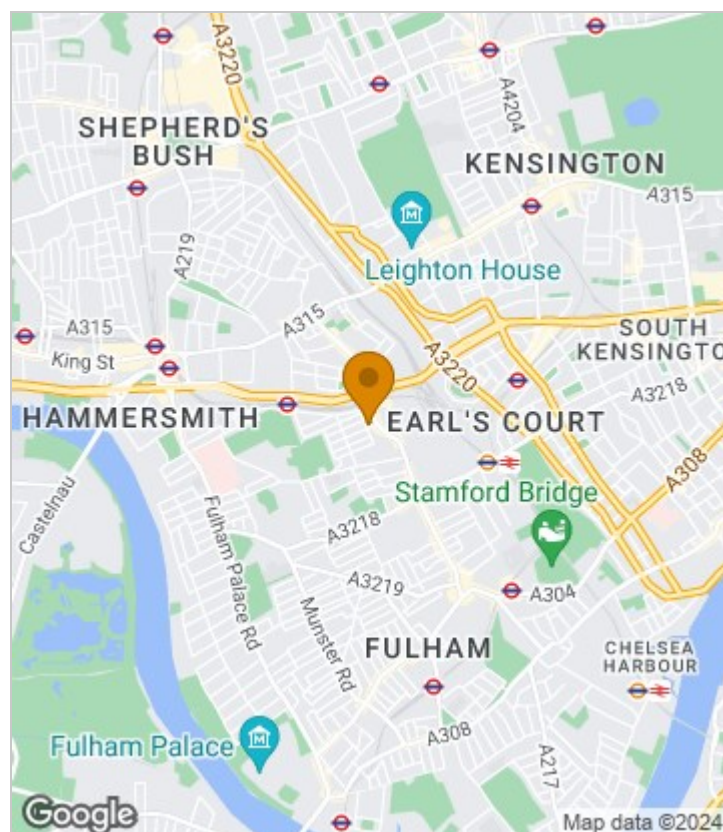
Situated on a peaceful residential street, this home benefits from proximity to cultural landmarks such as the Leighton House Museum, the Design Museum, and the serene Holland Park. Additionally, Kensington High Street offers an array of shopping options, while nearby parks provides ample opportunities for outdoor activities. Convenient public transport options include West Kensington and Barons Court tube stations.

The property includes amenities such as a lift and offers stunning views of London's dynamic skyline, blending historic and modern architectural elements. This apartment is offered on a furnished basis while still giving scope to personalisation, and is available from early October.

Council Tax Band D—Hammersmith & Fulham

Deposit: One weeks' rent to reserve, with a security deposit of either 5 weeks' rent (for properties under £50,000pa) or 6 weeks' rent (for those over £50,000pa).

## Area Map

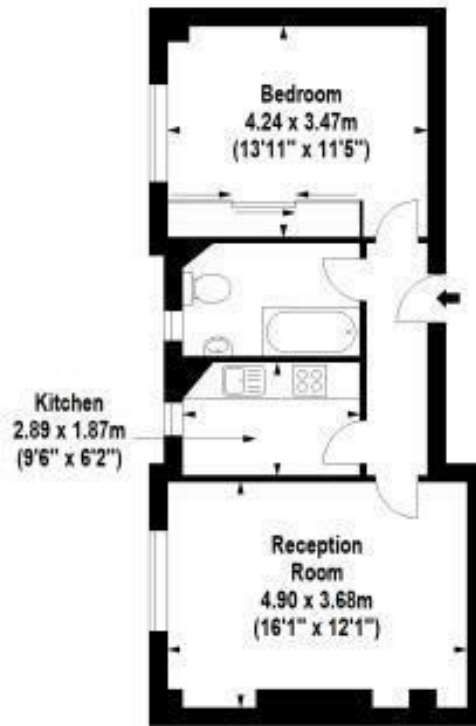






## Floor Plan

jorgensenturner  
estate agents



Sixth Floor

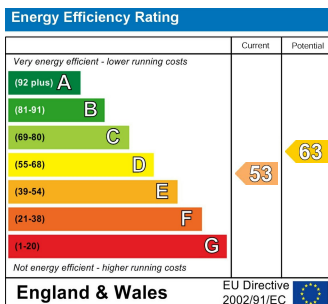
For Identification Purposes Only. Not To Scale. © www.totalvista.uk 2019

Charleville Court,  
Charleville Road, W14

Approx. Gross Internal Area  
48.77 Sq M - 525 Sq Ft

TOTALVISTA

## Energy Efficiency Graph



## Viewing

Please contact our Lettings SB Office on 0208 740 8740 if you wish to arrange a viewing appointment for this property or require further information.

- COZY LIVING AREA
- FUNCTIONAL KITCHEN
- LARGE BATHROOM
- CLOSE TO TUBE STATIONS
- OFFERED FURNISHED
- ABUNDANT NATURAL LIGHT
- BRIGHT BEDROOM
- RESIDENTIAL LOCATION
- STUNNING VIEWS

For further information contact:

Lettings SB, 234 Uxbridge Road, Shepherds Bush, London, W12 7JD

Tel: 0208 740 8740 Email: [enquiries@jorgensenturner.com](mailto:enquiries@jorgensenturner.com)

<https://www.jorgensenturner.com/>

### Disclaimer

These particulars, whilst believed to be accurate are set out as a general outline only for guidance and do not constitute any part of an offer or contract. Intending purchasers should not rely on them as statements of representation of fact, but must satisfy themselves by inspection or otherwise as to their accuracy. No person in this firm's employment has the authority to make or give any representation or warranty in respect of the property.

