

Nell Gwynn House, Sloane Avenue, London

£3,011 Per Month



Nell Gwynn House, Sloane Avenue, London

£3,011 Per Month



Summary Description

Jorgensen Turner Estate Agents proudly present this charming second-floor apartment in the heart of Chelsea. Nestled in the historic Nell Gwynn House, this property seamlessly combines Art Deco charm with modern convenience, offering a stylish setting in one of London's most sought-after neighbourhoods.

This cosy 344sqft apartment showcases an open-plan layout, beginning with a small hallway that leads into the main living area. Here, the sitting room and kitchen blend effortlessly, with modern appliances and sleek cabinetry providing the perfect setting for both entertaining and everyday living. The bedroom, accessible through elegant double doors coming off the reception area, offers a peaceful space, complemented by a compact yet functional bathroom.

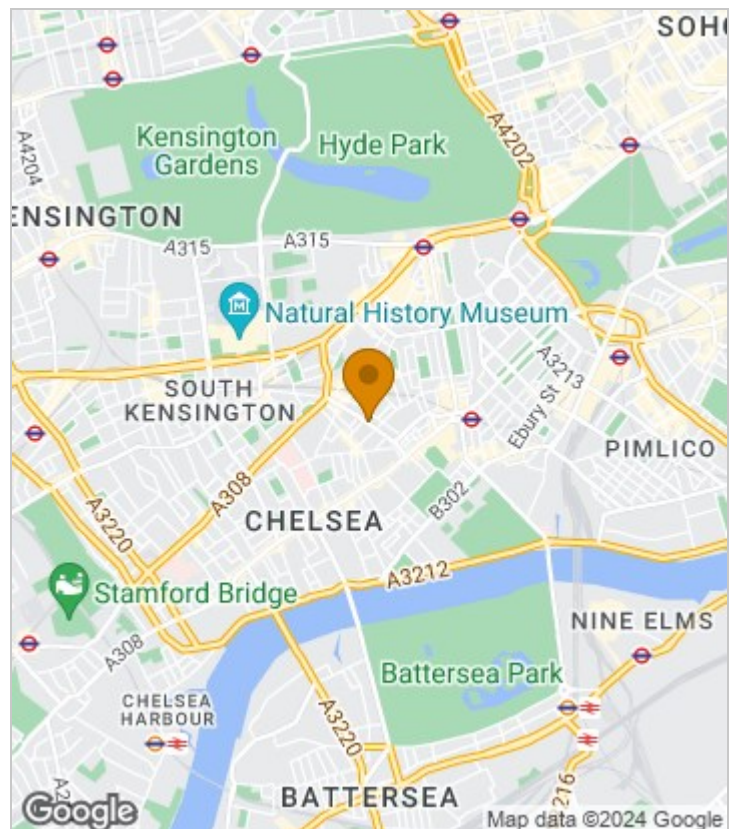
Built in 1937 by architect G. Kay Green, Nell Gwynn House stands out with its classic red brickwork and white trim, exuding timeless elegance. Inside, the updated interiors maintain a minimalist aesthetic, featuring hardwood floors in the living areas and soft carpeting in the bedroom. Residents benefit from a 24-hour concierge service, a modernised lobby, and convenient on-site amenities such as a laundry room.

Located within close to notable landmarks like the Saatchi Gallery, Chelsea Physic Garden, and Sloane Square, this property offers easy access to upscale shopping, dining, and cultural attractions. Public transportation is highly convenient, with Sloane Square and South Kensington Tube stations nearby, alongside numerous bus routes and River Bus services. This apartment is ideal for those seeking a luxurious lifestyle with a community feel in the vibrant and affluent Chelsea neighbourhood. Offered on a furnished basis and available from the end of August.

Council Tax Band D—Kensington & Chelsea

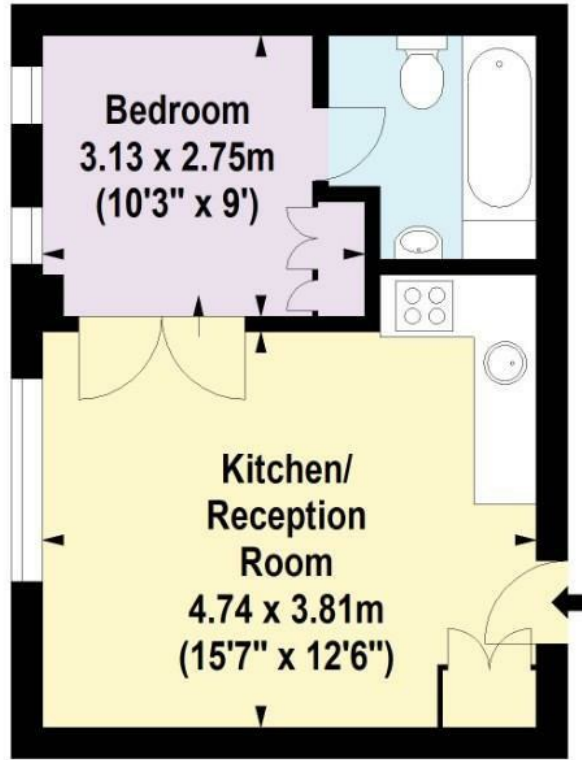
Deposit: One weeks' rent to reserve, with a security deposit of either 5 weeks' rent (for properties under £50,000pa) or 6 weeks' rent (for those over £50,000pa).

Area Map





Floor Plan



Second Floor

For Identification Purposes Only. Not To Scale. © www.totalvista.uk 2024

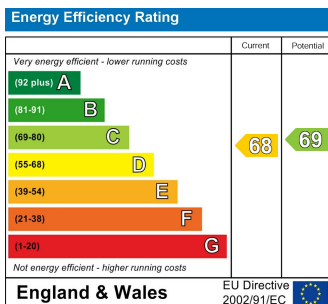


Nell Gwynn House, SW3

Approx. Gross Internal Area
31.69 Sq M - 340 Sq Ft



Energy Efficiency Graph



Viewing

Please contact our Lettings SB Office on 0208 740 8740 if you wish to arrange a viewing appointment for this property or require further information.

- ART DECO ARCHITECTURE
- UPDATED INTERIORS
- 24-HOUR CONCIERGE SERVICE
- EXCELLENT TRANSPORT LINKS NEARBY
- SOFT CARPETING IN THE BEDROOM
- OPEN-PLAN LAYOUT
- MODERN KITCHEN
- CLOSE TO SHOPPING AND DINING
- HARDWOOD FLOORS IN LIVING AREAS
- AVAILABLE FURNISHED FROM AUGUST

For further information contact:

Lettings SB, 234 Uxbridge Road, Shepherds Bush, London, W12 7JD

Tel: 0208 740 8740 Email: enquiries@jorgensenturner.com

<https://www.jorgensenturner.com/>

Disclaimer

These particulars, whilst believed to be accurate are set out as a general outline only for guidance and do not constitute any part of an offer or contract. Intending purchasers should not rely on them as statements of representation of fact, but must satisfy themselves by inspection or otherwise as to their accuracy. No person in this firm's employment has the authority to make or give any representation or warranty in respect of the property.

