



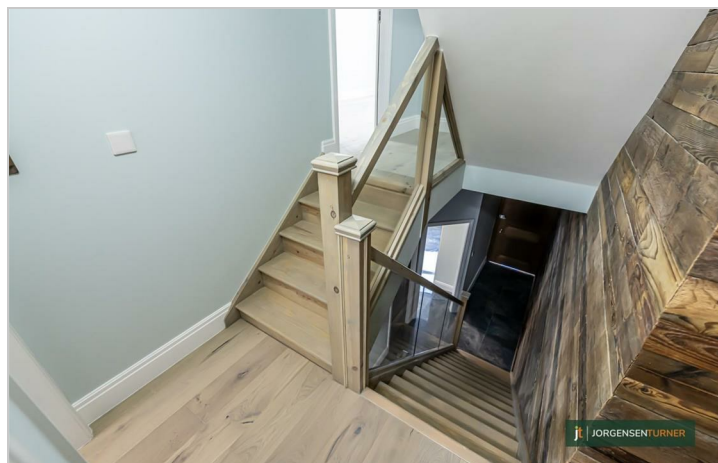
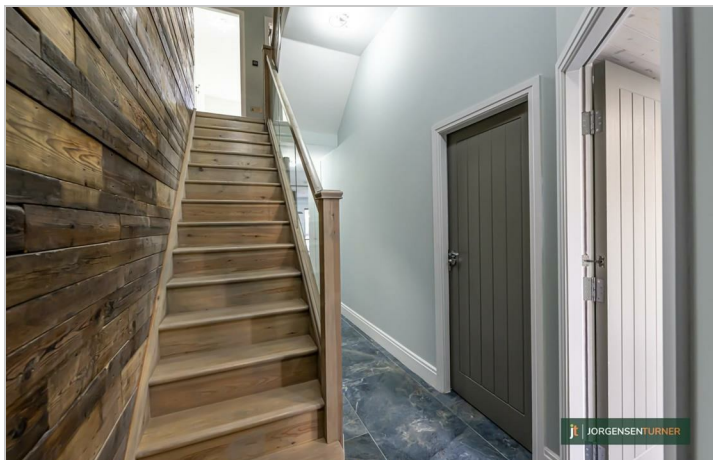
Gayford Road, Shepherds  
Bush, London  
£4,250 Per Month





# Gayford Road, Shepherds Bush, London

£4,250 Per Month



## Summary Description

Jorgensen Turner Estate Agents proudly present this stunning Victorian terraced house, newly available to the market. This spacious five-bedroom property stands out with its unique architectural features and a self-contained one-bedroom flat on the top floor, adding versatility to the elegant living space.

The house showcases a high standard of presentation throughout, with a focus on modern elegance. At the heart of this home is its open-concept kitchen, designed for both entertaining guests and stylish family nights-in. Accompanying this are sleek, marble-effect bathrooms, featuring pristine white suites and high-end finishes, ensuring convenience and luxury for residents and guests alike.

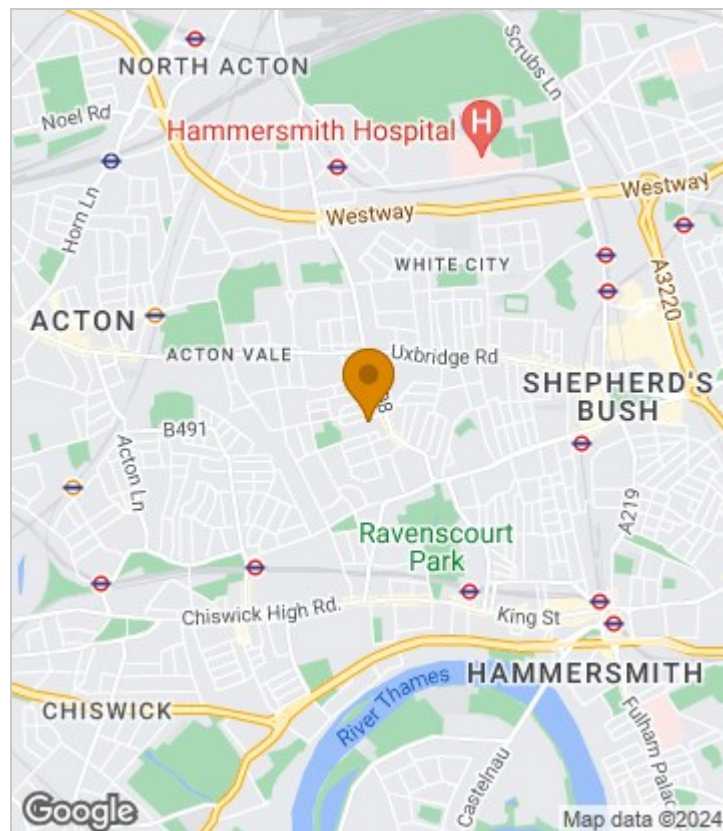
Settled on the vibrant Gayford Street in Shepherd's Bush, this property is a beautiful retreat that blends traditional Victorian charm with contemporary sophistication. Unique elements such as large bi-fold doors, skylights, a stylish staircase with glass railings, and feature wood-walls contribute to its distinct character. The private rear garden features a low-maintenance design with concrete and wooden decking, providing a peaceful and private outdoor space.

Ideally situated for easy access to the diverse amenities and excellent transport links of Shepherd's Bush, this home is conveniently close to landmarks such as the O2 Shepherd's Bush Empire, Bush Theatre, Shepherd's Bush Market, and Westfield London. Essential services like schools and hospitals are also nearby. This property is available immediately for occupation.

Council Tax Band F—Hammersmith and Fulham.

Deposit: One weeks' rent to reserve, with a security deposit of either 5 weeks' rent (for properties under £50,000pa) or 6 weeks' rent (for those over £50,000pa).

## Area Map



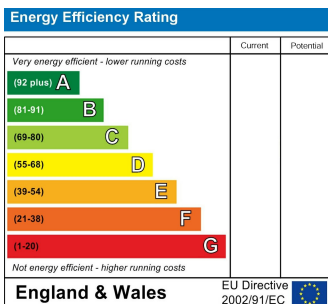




# Floor Plan



## Energy Efficiency Graph



## Viewing

Please contact our Lettings SB Office on 0208 740 8740 if you wish to arrange a viewing appointment for this property or require further information.

- STUNNING VICTORIAN TERRACED HOUSE
- FIVE SPACIOUS BEDROOMS
- SELF-CONTAINED ONE-BEDROOM FLAT ON TOP FLOOR
- MODERN OPEN-CONCEPT KITCHEN
- MARBLE-EFFECT BATHROOMS
- LARGE BI-FOLD DOORS
- STYLISH STAIRCASE
- FEATURE WOOD WALLS
- PRIVATE REAR GARDEN WITH DECKING
- PRIME LOCATION

For further information contact:

Lettings SB, 234 Uxbridge Road, Shepherds Bush, London, W12 7JD

Tel: 0208 740 8740 Email: [enquiries@jorgensenturner.com](mailto:enquiries@jorgensenturner.com)

<https://www.jorgensenturner.com/>

### Disclaimer

These particulars, whilst believed to be accurate are set out as a general outline only for guidance and do not constitute any part of an offer or contract. Intending purchasers should not rely on them as statements of representation of fact, but must satisfy themselves by inspection or otherwise as to their accuracy. No person in this firm's employment has the authority to make or give any representation or warranty in respect of the property.

