

White City Close,
Shepherds Bush, London

£3,200 Per Month



White City Close, Shepherds Bush, London

£3,200 Per Month



Summary Description

Jorgensen Turner Estate Agents proudly present this stunning three-floor house newly available to the market. This four-bedroom property stands out with its unique layout and modern design, offering a blend of comfort and style.

The house showcases a high standard of presentation throughout, with a focus on spacious living. At the heart of this home is its modern kitchen, featuring light wooden cabinetry, sleek black countertops, and built-in appliances, ideal for both entertaining and daily use. The bright and spacious living area, with its hardwood floors and large windows, creates a welcoming atmosphere, while sloped ceilings and skylights add a distinctive charm.

Situated in a vibrant and diverse neighbourhood, this property is a retreat from the hustle and bustle of city life. Its prime location offers easy access to notable attractions such as Westfield London Shopping Centre, O2 Shepherd's Bush Empire, and Loftus Road Stadium, blending bustling retail and dining options with family-friendly spots.

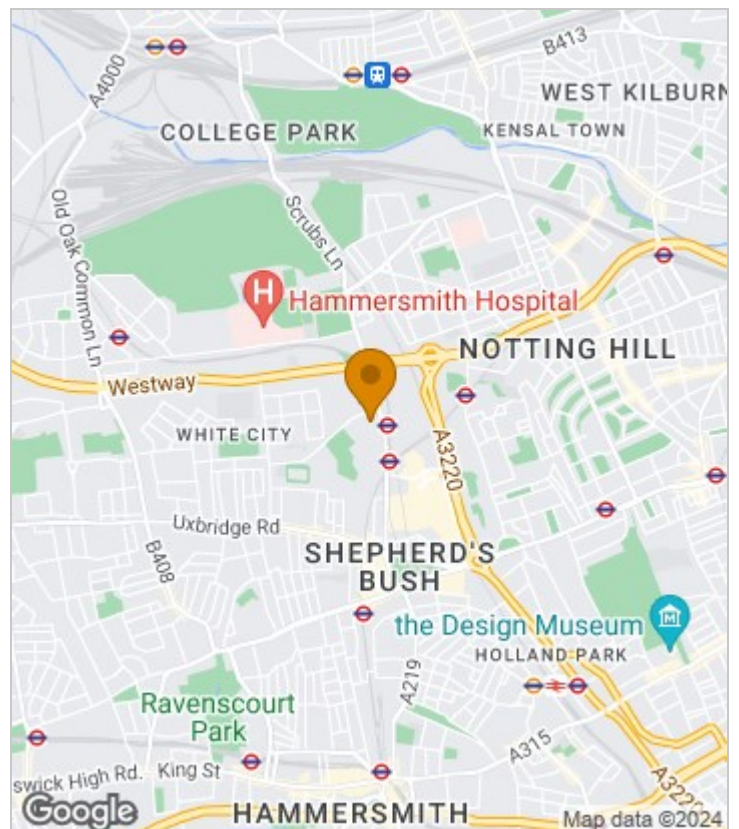
The red brick exterior, multi-level patio, and fenced front yard enhance the curb appeal of this home. Inside, the layout is thoughtfully designed for functionality and comfort, with a ground floor reception room, kitchen, and a large dual-tired patio area. The first floor features two bedrooms and a bathroom, while the second floor offers two additional bedrooms and another bathroom, ensuring convenience for residents and guests alike.

Proximity to excellent schools and extensive transport options, including bus routes and multiple Underground and Overground stations, ensures easy access to central London and beyond. This house is offered furnished and is available from the end of August 2024.

Council Tax Band E—Hammersmith and Fulham.

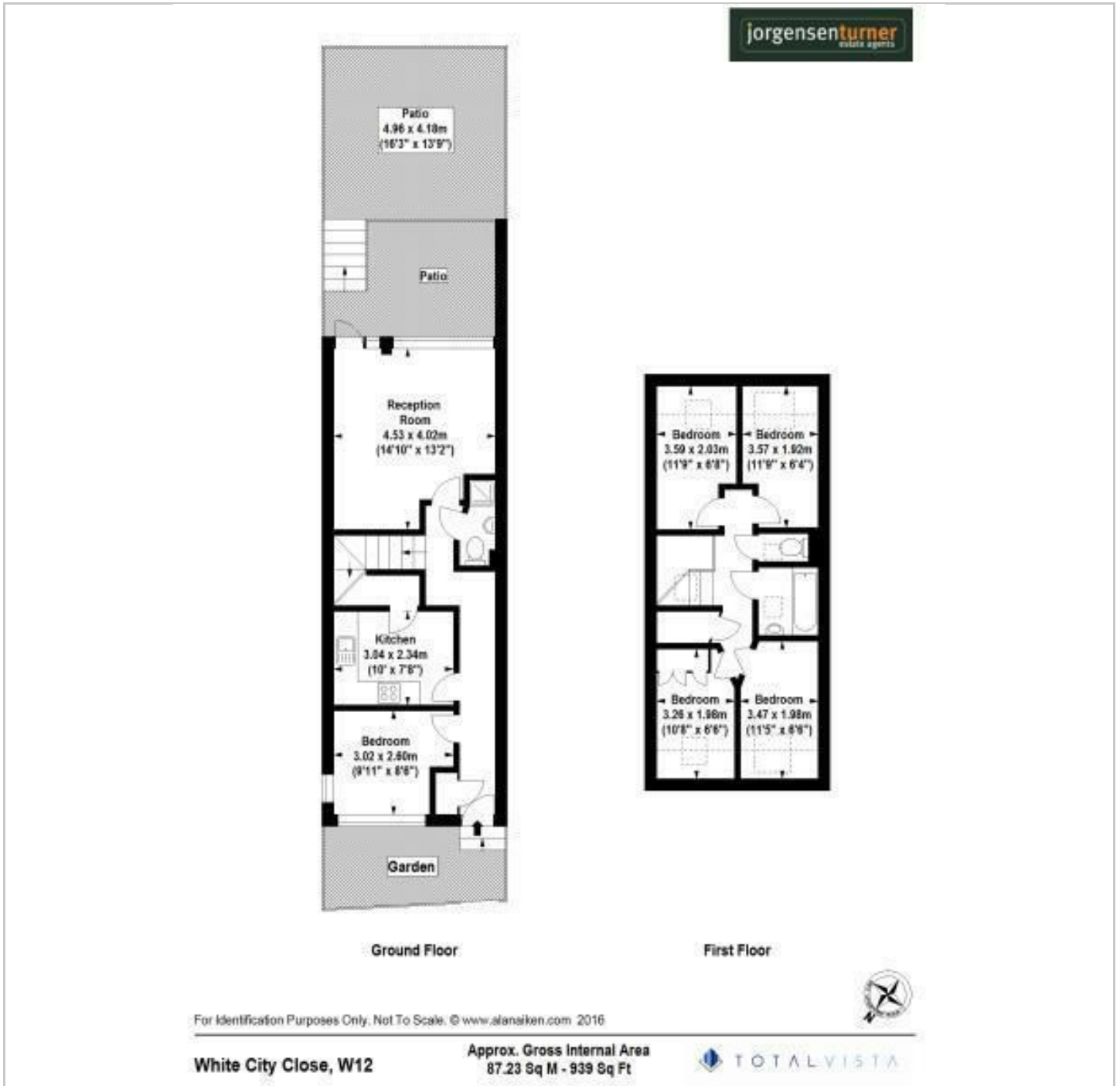
Deposit: One weeks' rent to reserve, with a security deposit of either 5 weeks' rent (for properties under £50,000pa) or 6 weeks' rent (for those over £50,000pa).

Area Map

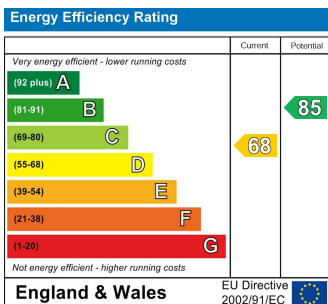




Floor Plan



Energy Efficiency Graph



Viewing

Please contact our Lettings SB Office on 0208 740 8740 if you wish to arrange a viewing appointment for this property or require further information.

- THREE-STORY LAYOUT
- SPACIOUS LIVING AREA
- BEAUTIFUL EXTERIOR
- PRIME LOCATION
- CLOSE TO TRANSPORT LINKS
- MODERN DESIGN
- MODERN KITCHEN
- MULTI-LEVEL PATIO
- FAMILY-FRIENDLY NEIGHBOURHOOD
- AVAILABLE END-AUGUST

For further information contact:

Lettings SB, 234 Uxbridge Road, Shepherds Bush, London, W12 7JD

Tel: 0208 740 8740 Email: enquiries@jorgensenturner.com

<https://www.jorgensenturner.com/>

Disclaimer

These particulars, whilst believed to be accurate are set out as a general outline only for guidance and do not constitute any part of an offer or contract. Intending purchasers should not rely on them as statements of representation of fact, but must satisfy themselves by inspection or otherwise as to their accuracy. No person in this firm's employment has the authority to make or give any representation or warranty in respect of the property.

