



jorgensenturner
estate agents



Uxbridge Road, Shepherds
Bush, London

£1,850 Per Month



jo  2  1  1  C jo

Uxbridge Road, Shepherds Bush, London

£1,850 Per Month



Summary Description

Jorgensen Turner Estate Agents proudly presents this charming apartment newly available to the market. Nestled in the vibrant and culturally rich area of Shepherd's Bush, this two-bedroom property on Uxbridge Road stands out with its blend of historical charm and modern amenities.

The apartment showcases a high standard of presentation throughout, with a focus on contemporary living. At the heart of this home is its open-plan living area, designed to seamlessly integrate a well-equipped kitchen with integrated appliances and contemporary light fixtures, making it perfect for both entertaining guests and enjoying cosy nights in. Accompanying this is a modern bathroom, ensuring convenience and comfort for residents.

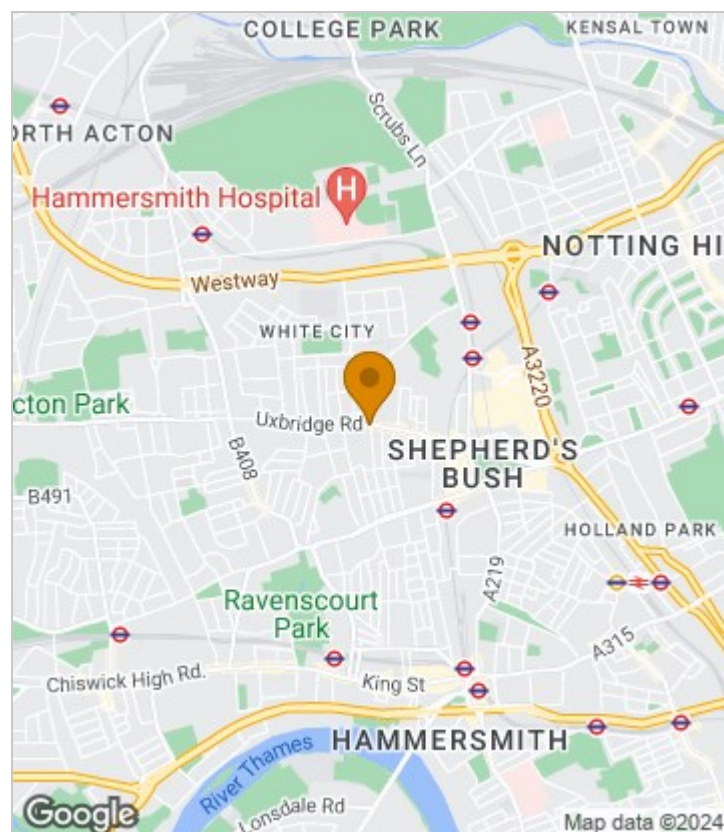
Set within this traditional Victorian conversion, the interior is complemented by sleek hardwood laminate flooring and a minimalist design. The property is conveniently located close to Shepherd's Bush Market, Bush Theatre, and Westfield London, offering extensive shopping, dining, and entertainment options. Excellent public transportation links, including nearby bus and tube stations, ensure easy access across London.

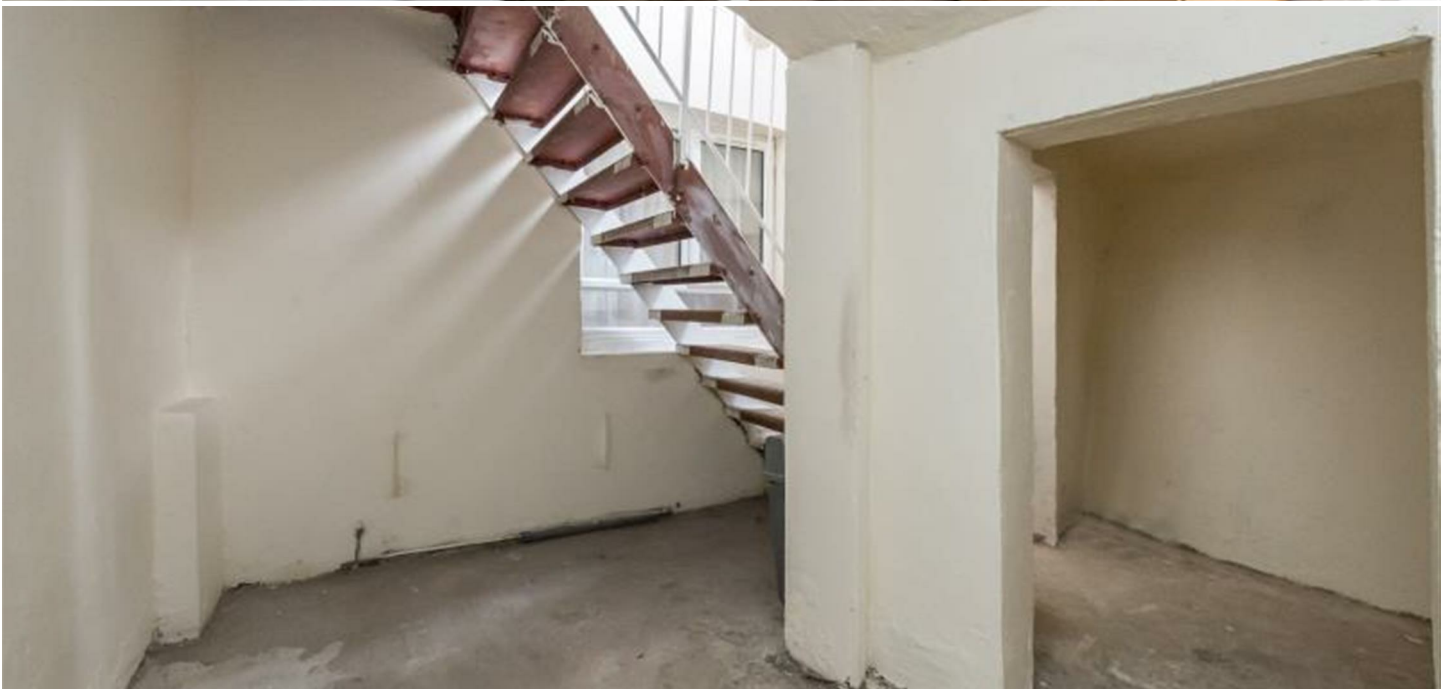
For families, the proximity to outstanding schools such as Ark Conway Primary Academy and Greenside Primary School, along with high-quality childcare at Two Hands Preschool, makes this area particularly appealing. With its rich cultural venues, diverse dining options, and vibrant community atmosphere, this apartment is ideal for families and professionals seeking a dynamic urban lifestyle. The apartment is offered furnished and is available from the end of September.

Council Tax Band D—Hammersmith & Fulham

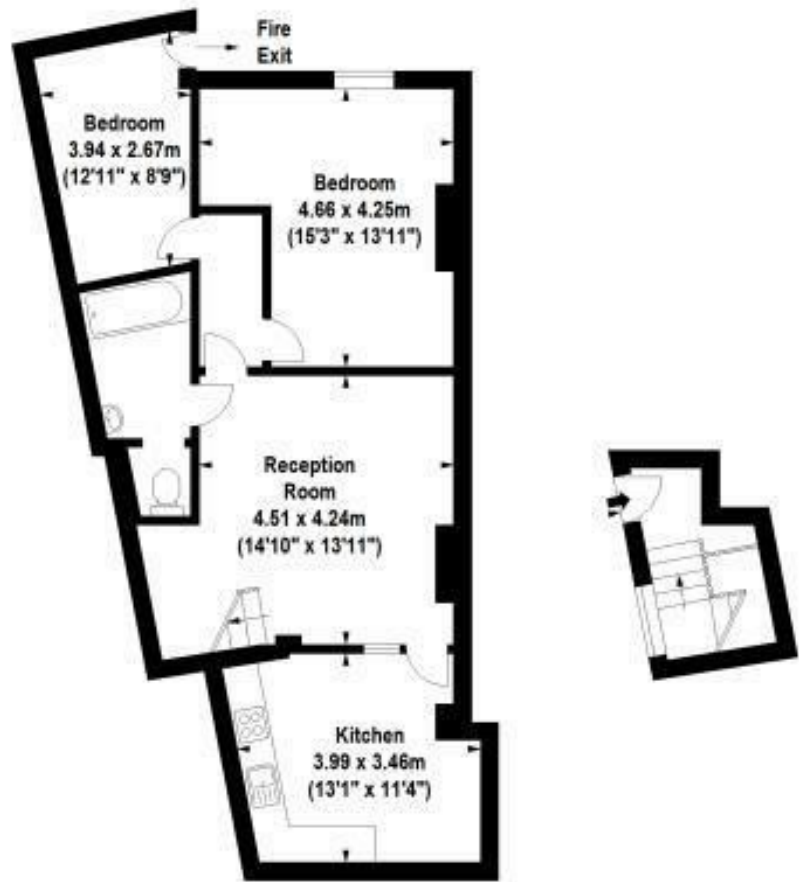
Deposit: One weeks' rent to reserve, with a security deposit of either 5 weeks' rent (for properties under £50,000pa) or 6 weeks' rent (for those over £50,000pa).

Area Map





Floor Plan



Lower Ground Floor

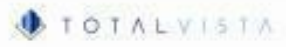
Ground Floor Entrance

For Identification Purposes Only. Not To Scale. © www.totalvista.uk 2017

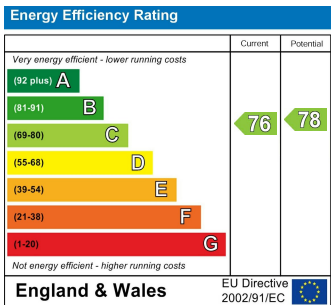


Uxbridge Road, W12

Approx. Gross Internal Area
76.09 Sq M - 819 Sq Ft



Energy Efficiency Graph



Viewing

Please contact our Lettings SB Office on 0208 740 8740 if you wish to arrange a viewing appointment for this property or require further information.

- CENTRAL SHEPHERD'S BUSH
- OPEN-PLAN LIVING AREA LOCATION
- WELL-EQUIPPED KITCHEN
- MINIMALIST INTERIOR DESIGN
- EXCELLENT PUBLIC TRANSPORT LINKS
- AVAILABLE FROM END OF SEPTEMBER
- HARDWOOD LAMINATE FLOORING
- CLOSE TO SHOPS AND AMENITIES
- PERFECT FOR FAMILIES AND PROFESSIONALS

For further information contact:
 Lettings SB, 234 Uxbridge Road, Shepherds Bush, London, W12 7JD
 Tel: 0208 740 8740 Email: enquiries@jorgensenturner.com
<https://www.jorgensenturner.com/>

Disclaimer

These particulars, whilst believed to be accurate are set out as a general outline only for guidance and do not constitute any part of an offer or contract. Intending purchasers should not rely on them as statements of representation of fact, but must satisfy themselves by inspection or otherwise as to their accuracy. No person in this firm's employment has the authority to make or give any representation or warranty in respect of the property.

