



Charleville Road, West
Kensington, London

£1,850 Per Month



1



1



1



D



Charleville Road, West Kensington, London

£1,850 Per Month



Summary Description

Jorgensen Turner Estate Agents proudly present this charming first-floor apartment newly available to the market. This one-bedroom property stands out with its beautiful layout and well-appointed living space, making it a perfect choice for comfortable living.

The apartment showcases a high standard of presentation throughout, with a focus on modern conveniences. At the heart of this home is its kitchen, designed with modern appliances for both practicality and style. Accompanying this is a sleek bathroom, featuring a clean and functional suite, ensuring convenience for residents and guests alike.

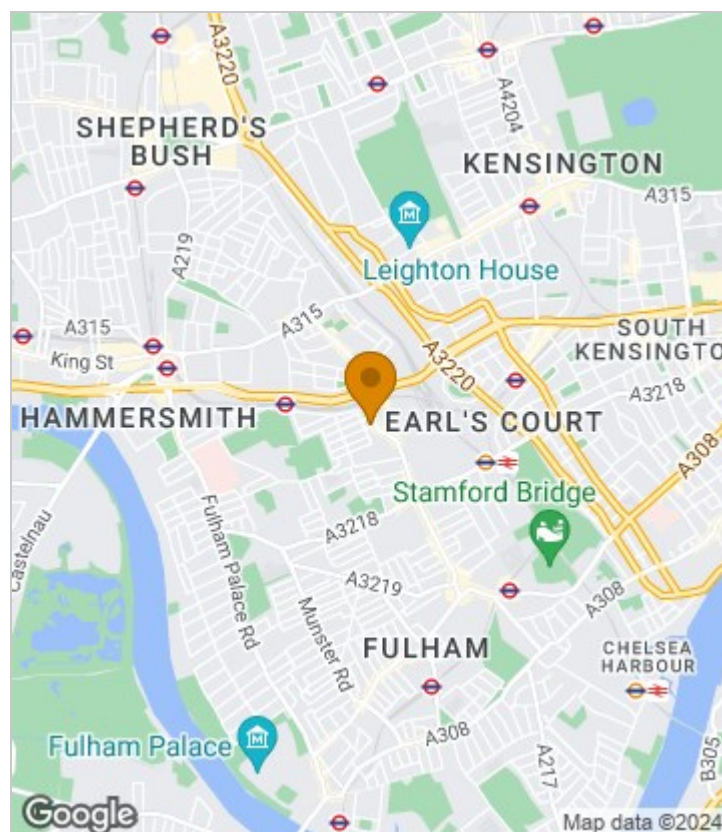
Settled in the vibrant, family-friendly neighbourhood of West Kensington, this property offers a retreat from the hustle and bustle of city life. It's ideally situated for easy access to the diverse amenities and excellent transport links of the area, including multiple Tube stations and bus lines within walking distance. Nearby landmarks such as the Carne Studio Theatre, Lyric Hammersmith Theatre, and Eventim Apollo add to the location's appeal.

Charleville Court is a sturdy brick building with large windows and a prominent entrance, ensuring a blend of elegance and practicality. The property is in excellent condition, reflecting a clean, modern, and functional living space. Nearby amenities include Westfield London for shopping and dining, Holland Park, and Normand Park for outdoor activities. The apartment is offered furnished while still providing a blank canvas for personalisation. Available end of August.

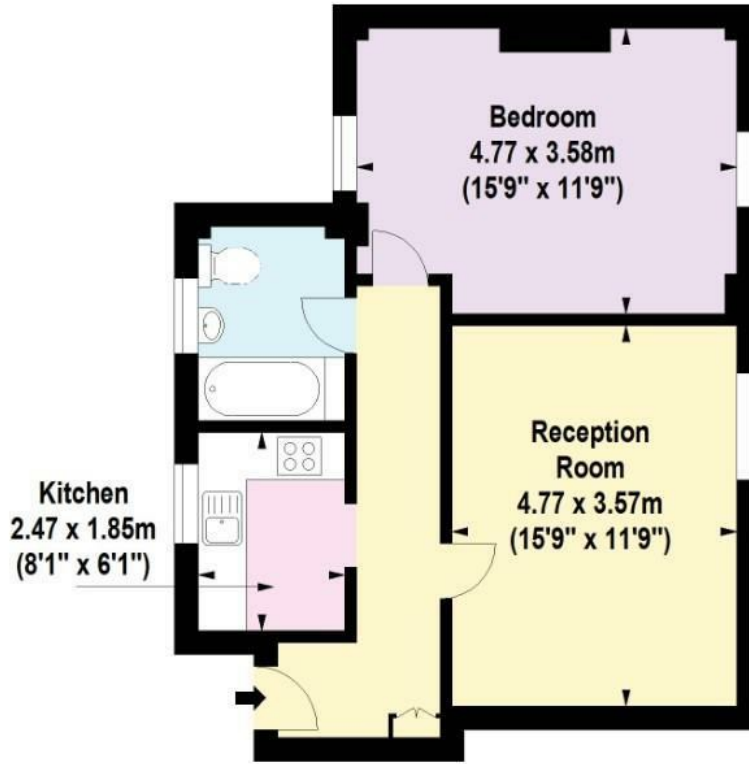
Council Tax Band D - Hammersmith & Fulham

Deposit: One weeks' rent to reserve the property, with a security deposit of either 5 weeks' rent (for properties under £50,000pa) or 6 weeks' rent (for those over £50,000pa).

Area Map



Floor Plan



First Floor

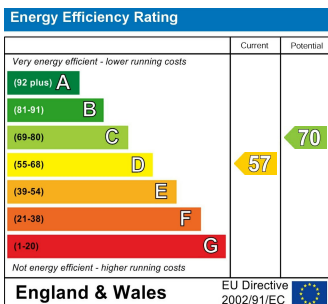
For Identification Purposes Only. Not To Scale. © www.totalvista.uk 2024

**Charleville Court,
Charleville Road, W14**

Approx. Gross Internal Area
53.05 Sq M - 571 Sq Ft



Energy Efficiency Graph



Viewing

Please contact our Lettings SB Office on 0208 740 8740 if you wish to arrange a viewing appointment for this property or require further information.

- CHARMING FIRST-FLOOR APARTMENT
- HIGH STANDARD OF PRESENTATION
- WELL-APPOINTED KITCHEN WITH MODERN APPLIANCES
- VIBRANT, FAMILY-FRIENDLY NEIGHBORHOOD
- LARGE WINDOWS FOR NATURAL LIGHT
- BEAUTIFULLY LAY-OUT
- MODERN CONVENIENCES THROUGHOUT
- SLEEK AND FUNCTIONAL BATHROOM
- EXCELLENT TRANSPORT LINKS AND AMENITIES
- OFFERED FURNISHED

For further information contact:

Lettings SB, 234 Uxbridge Road, Shepherds Bush, London, W12 7JD

Tel: 0208 740 8740 Email: enquiries@jorgensenturner.com

<https://www.jorgensenturner.com/>

Disclaimer

These particulars, whilst believed to be accurate are set out as a general outline only for guidance and do not constitute any part of an offer or contract. Intending purchasers should not rely on them as statements of representation of fact, but must satisfy themselves by inspection or otherwise as to their accuracy. No person in this firm's employment has the authority to make or give any representation or warranty in respect of the property.

