



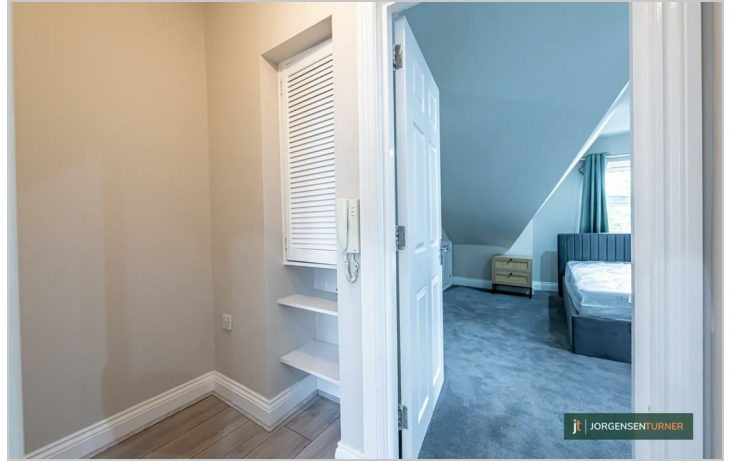
Allison Road, Acton

£1,800 Per Week



Allison Road, Acton

£1,800 Per Week



Summary Description

*****NEWLY REBURBISHED ***** Jorgensen Turner estate agents are proud to offer this **NEWLY REFURBISHED** one-bedroom loft style top floor flat moments from Acton main line (Elizabeth line) and North Acton central line station. The property has been refurbished throughout and comprises: one bedroom, generous reception and **BRAND NEW** modern kitchen and a shower room. Inundated with natural light further benefits include double glazed windows and good storage. Offered to the market furnished and available from **NOW**. Early viewings are highly recommended.

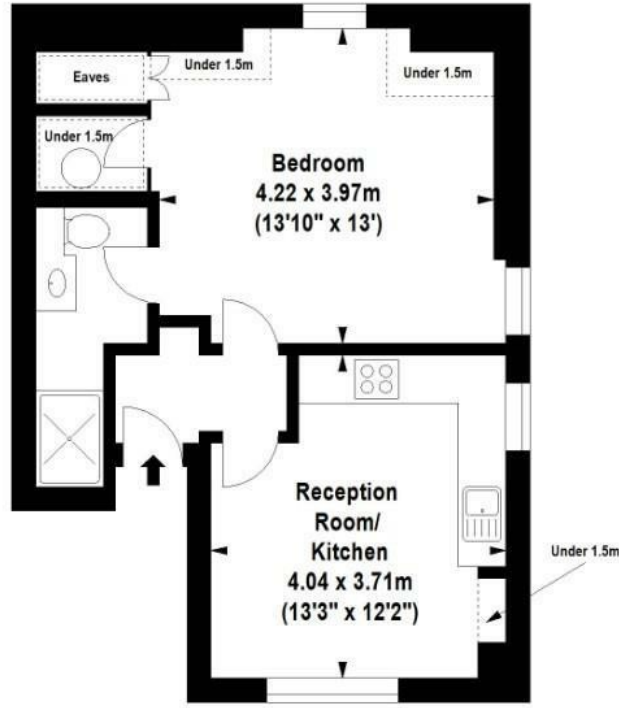
Deposit: One weeks' rent to reserve, with a security deposit of either 5 weeks' rent (for properties under £50,000pa) or 6 weeks' rent (for those over £50,000pa).

Area Map





Floor Plan



Second Floor

For Identification Purposes Only. Not To Scale. © www.totalvista.uk 2024

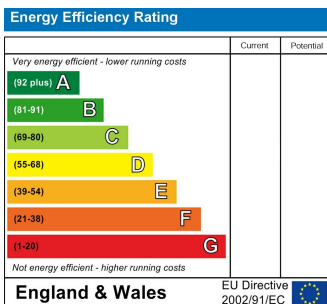


Allison Road , W3

Approx. Gross Internal Area
39.39 Sq M - 424 Sq Ft



Energy Efficiency Graph



Viewing

Please contact our Lettings SB Office on 0208 740 8740 if you wish to arrange a viewing appointment for this property or require further information.

- NEWLY REFURBISHED ▪ BRAND NEW KITCHEN AND BATHROOM
- MOMENTS FROM ACTON ▪ AVAILABLE NOW ELIZABETH LINE
- FURNISHED

For further information contact:

Lettings SB, 234 Uxbridge Road, Shepherds Bush, London, W12 7JD

Tel: 0208 740 8740 Email: enquiries@jorgensenturner.com

<https://www.jorgensenturner.com/>

Disclaimer

These particulars, whilst believed to be accurate are set out as a general outline only for guidance and do not constitute any part of an offer or contract. Intending purchasers should not rely on them as statements of representation of fact, but must satisfy themselves by inspection or otherwise as to their accuracy. No person in this firm's employment has the authority to make or give any representation or warranty in respect of the property.