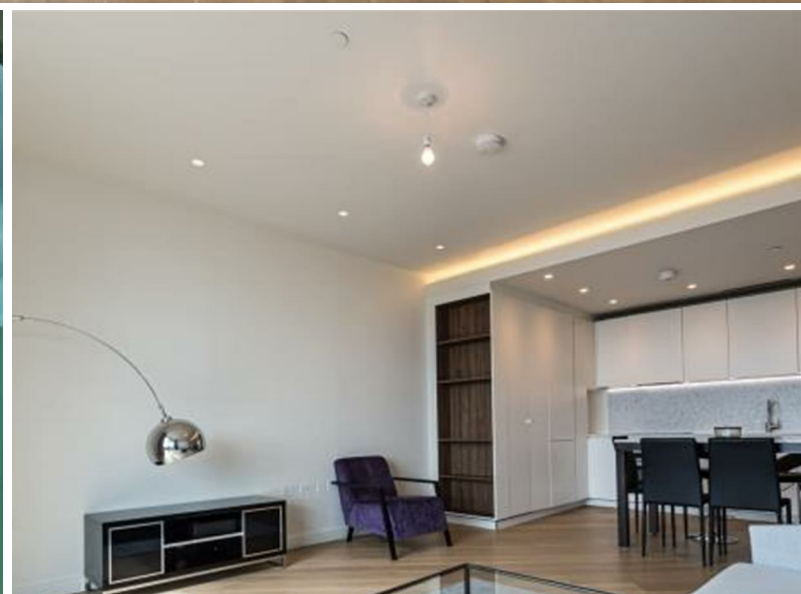




Television Centre,  
Shepherds Bush, London  
£3,000 Per Month



 1  1  1  B

# Television Centre, Shepherds Bush, London

£3,000 Per Month



## Summary Description

**\*\*PETS CONSIDERED\*\*** Jorgensen Turner Estate Agents proudly present this stunning fifth-floor apartment, newly available to the market in the iconic Television Centre, White City. This one-bedroom property stands out with its spacious balcony, offering a private retreat with unobstructed urban views.

The apartment showcases a high standard of presentation throughout, with a focus on modern living. At the heart of this home is its open-plan layout, featuring a spacious reception room and a sleek kitchen equipped with high-end appliances, designed for both entertaining guests and stylish nights-in. Accompanying this is a modern bathroom, featuring a walk-in shower with a rainfall showerhead and stylish geometric tiles, ensuring convenience and luxury for residents and guests alike.

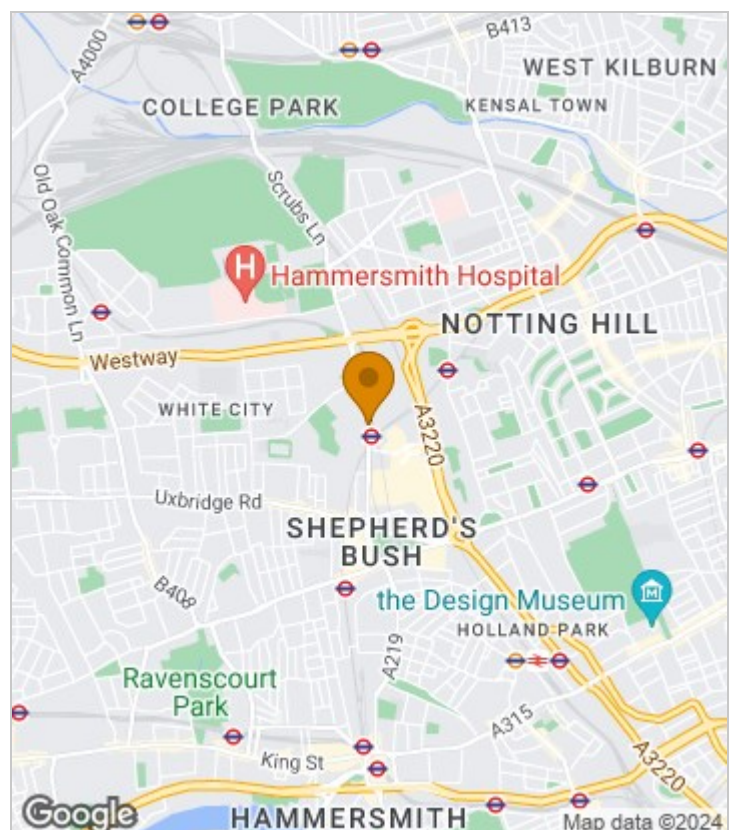
Settled within the distinctive architectural features of the Television Centre, this property combines historical significance with contemporary living. The development offers luxurious amenities such as a gym, swimming pool, Soho House club, and Electric Cinema, enhancing the lifestyle of its residents. Ideally situated in a vibrant neighbourhood, this apartment provides easy access to the diverse amenities and excellent transport links of White City. The area is family-friendly, with parks and essential amenities like grocery stores and hospitals nearby. The apartment is offered furnished with scope for personalisation and is available from beginning July for occupancy.

This property perfectly combines modern living with historical significance, making it an exceptional place to live.

Council Tax Band E—Hammersmith and Fulham.

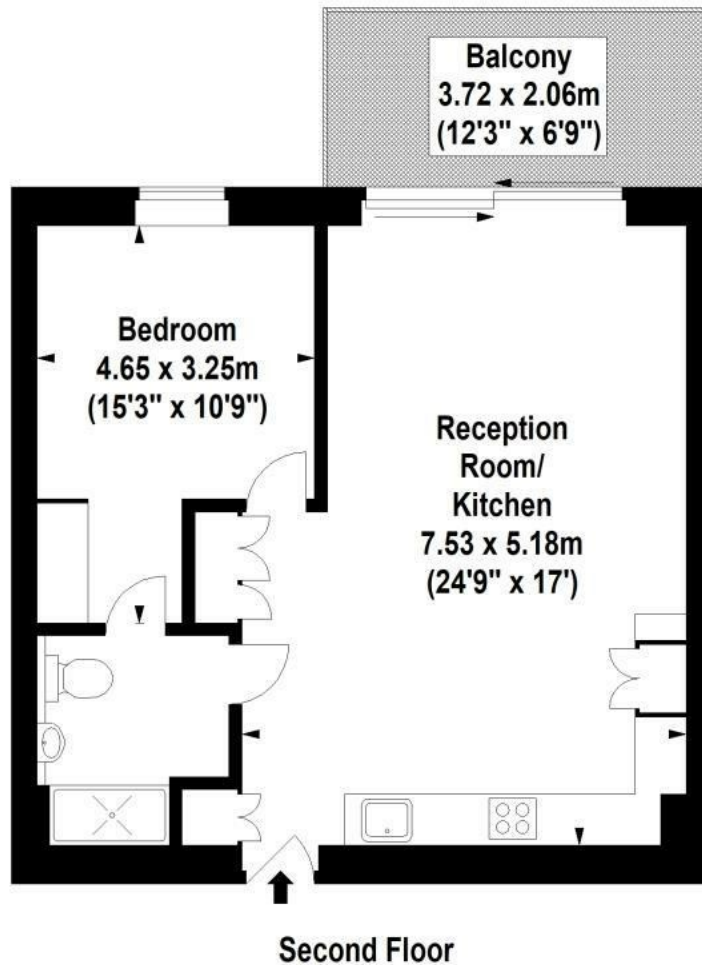
Deposit: One weeks' rent to reserve, with a security deposit of either 5 weeks' rent (for properties under £50,000pa) or 6 weeks' rent (for those over £50,000pa).

## Area Map





# Floor Plan



For Identification Purposes Only. Not To Scale. © www.totalvista.uk 2022

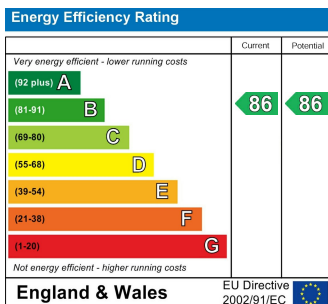


Wood Crescent, W12

Approx. Gross Internal Area  
56.01 Sq M - 603 Sq Ft



## Energy Efficiency Graph



## Viewing

Please contact our Lettings SB Office on 0208 740 8740 if you wish to arrange a viewing appointment for this property or require further information.

- STUNNING ARCHITECTURAL DESIGN
- PRIVATE BALCONY WITH URBAN VIEWS
- SLEEK KITCHEN WITH HIGH-END APPLIANCES
- HISTORICALLY SIGNIFICANT DEVELOPMENT
- VIBRANT AND FAMILY-FRIENDLY NEIGHBOURHOOD
- SPACIOUS FIFTH-FLOOR APARTMENT
- OPEN-PLAN LAYOUT FOR MODERN LIVING
- LUXURIOUS BATHROOM WITH RAINFALL SHOWER
- ACCESS TO EXCLUSIVE AMENITIES
- CONVENIENT TRANSPORT LINKS AND AMENITIES

For further information contact:

Lettings SB, 234 Uxbridge Road, Shepherds Bush, London, W12 7JD

Tel: 0208 740 8740 Email: [enquiries@jorgensenturner.com](mailto:enquiries@jorgensenturner.com)

<https://www.jorgensenturner.com/>

### Disclaimer

These particulars, whilst believed to be accurate are set out as a general outline only for guidance and do not constitute any part of an offer or contract. Intending purchasers should not rely on them as statements of representation of fact, but must satisfy themselves by inspection or otherwise as to their accuracy. No person in this firm's employment has the authority to make or give any representation or warranty in respect of the property.

