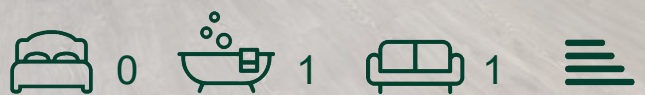


Uxbridge Road, Shepherds
Bush, London

£1,330 Per Month



Uxbridge Road, Shepherds Bush, London

£1,330 Per Month



Summary Description

****SINGLE OCCUPANTS ONLY**** Jorgensen Turner Estate Agents are delighted to present this stylish, ground-floor studio apartment, now available on the bustling Uxbridge Road in the vibrant W12 area. This 207sqft studio showcases modern, urban living with its sleek, minimalist design. The space is thoughtfully laid out, seamlessly integrating living, sleeping, and dining areas with a functional kitchenette finished in white cabinetry and equipped with essential appliances.

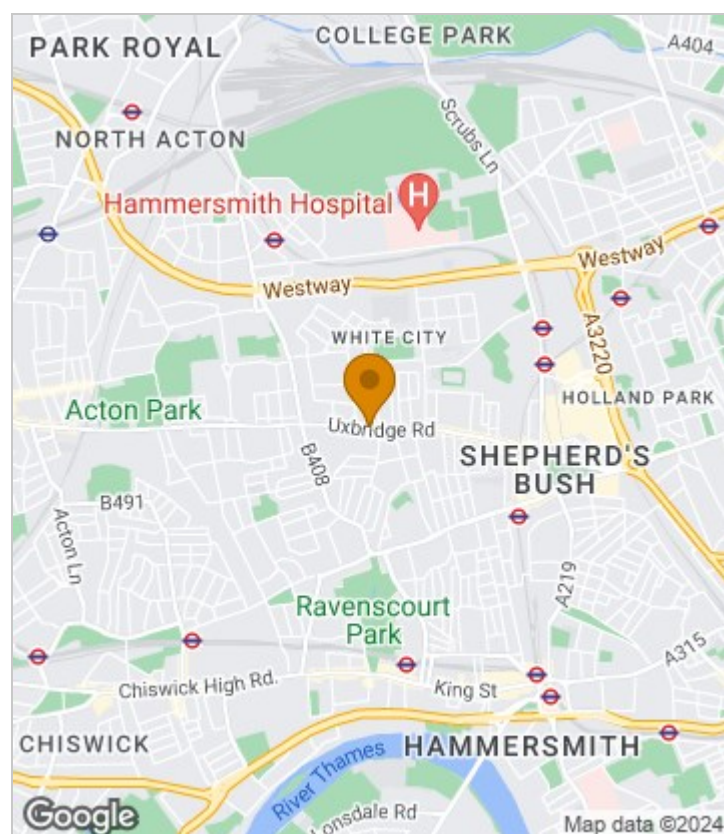
The apartment is fitted with durable grey wood laminate flooring and a palette of neutral colours that enhance the sense of space and light. A contemporary bathroom, featuring a glass shower enclosure, adds to the apartment's modern amenities, providing a practical and elegant solution to living.

Set within a traditional red brick building, this home is just moments away from major attractions such as Westfield London and Loftus Road Stadium. Its prime location near Shepherd's Bush underground station makes it an excellent choice for young professionals or couples seeking a dynamic lifestyle in one of London's most sought-after neighbourhoods. Offered furnished, this apartment invites residents to imprint their personal style, making it their own personal retreat amidst the city's lively culture and conveniences.

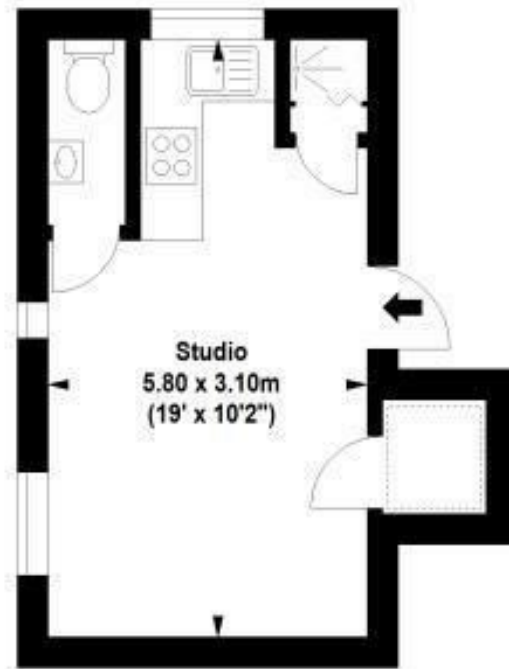
Council Tax Band D—Hammersmith & Fulham.

Deposit: One weeks' rent to reserve, with a security deposit of either 5 weeks' rent (for properties under £50,000pa) or 6 weeks' rent (for those over £50,000pa).

Area Map



Floor Plan



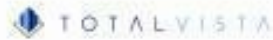
Ground Floor

For Identification Purposes Only. Not To Scale. © www.totalvista.uk 2018

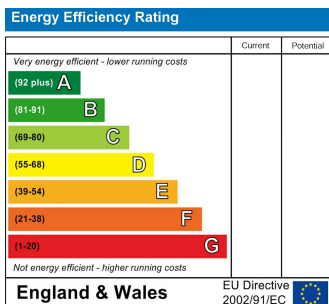


Uxbridge Road, W12

Approx. Gross Internal Area
19.23 Sq M - 207 Sq Ft



Energy Efficiency Graph



Viewing

Please contact our Lettings SB Office on 0208 740 8740 if you wish to arrange a viewing appointment for this property or require further information.

- STYLISH MINIMALIST DESIGN
- GREY WOOD LAMINATE FLOORING
- GLASS SHOWER ENCLOSURE
- CLOSE TO WESTFIELD LONDON
- OFFERED FURNISHED
- SEAMLESS OPEN-PLAN LAYOUT
- MODERN KITCHENETTE
- PRIME LOCATION IN W12
- NEAR SHEPHERD'S BUSH UNDERGROUND STATION
- AVAILABLE NOW

For further information contact:

Lettings SB, 234 Uxbridge Road, Shepherds Bush, London, W12 7JD

Tel: 0208 740 8740 Email: enquiries@jorgensenturner.com

<https://www.jorgensenturner.com/>

Disclaimer

These particulars, whilst believed to be accurate are set out as a general outline only for guidance and do not constitute any part of an offer or contract. Intending purchasers should not rely on them as statements of representation of fact, but must satisfy themselves by inspection or otherwise as to their accuracy. No person in this firm's employment has the authority to make or give any representation or warranty in respect of the property.

