



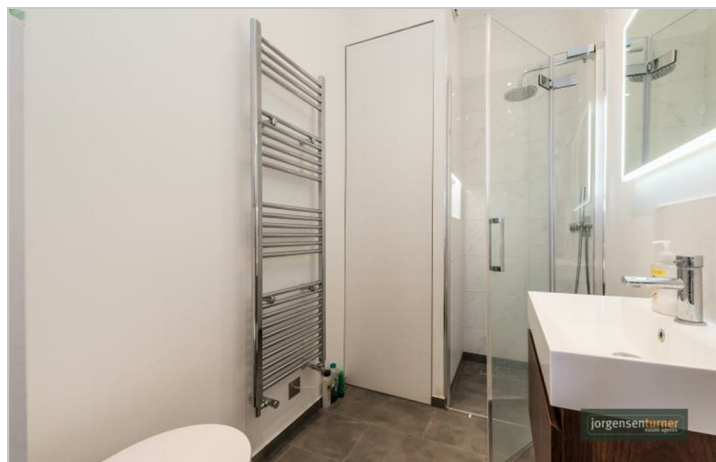
Bloemfontein Road,
Shepherds Bush, London

£2,800 Per Month

 3  2  1  C

Bloemfontein Road, Shepherds Bush, London

£2,800 Per Month



Summary Description

Jorgensen Turner Estate Agents are delighted to introduce this beautiful Victorian period conversion located on Bloemfontein Road in the culturally vibrant Shepherd's Bush. Just a stone's throw from locations such as Westfield London, Shepherd's Bush Empire, and the historic BBC Television Centre, this property is ideally positioned in the heart of one of London's most dynamic neighbourhoods.

This multi-level home spans 885square feet, seamlessly blending historical elegance with modern living. It features three thoughtfully arranged bedrooms and two bathrooms, making it perfect for both families and professionals. At the heart of this home is a top-floor kitchen/reception room, maximising on both space and comfort.

With dark hardwood flooring throughout, natural light floods the main living spaces through skylights and traditional sash and bay windows, highlighting the high-quality finishes and modern appliances that characterise each room.

Outside, the property features classic Victorian architecture with a brick façade laced with intricate stonework and white-trimmed sash windows. The roof is beautifully tiled and accented with charming dormer windows that brighten the upper levels.

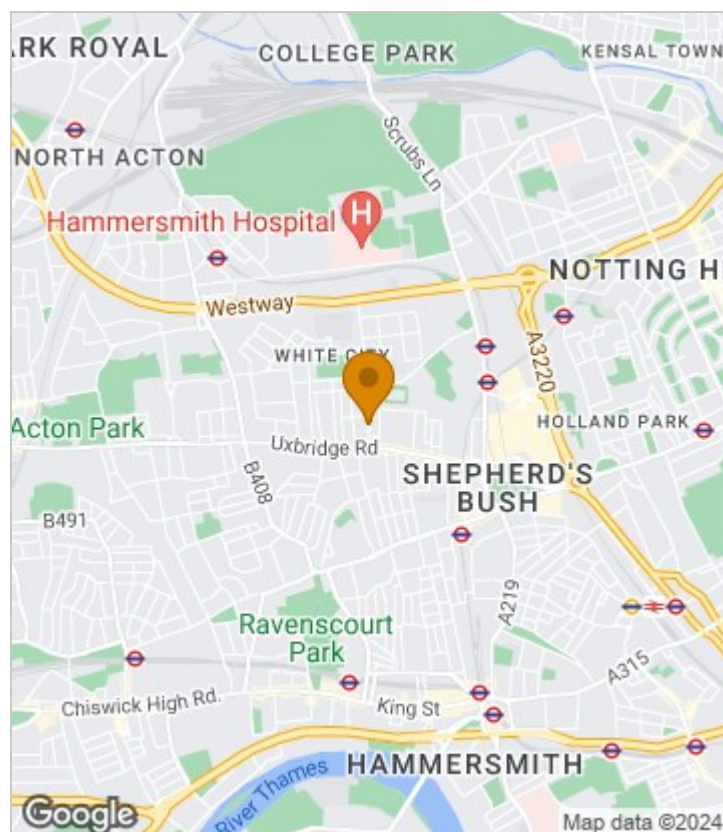
Located in an area renowned for its superb local amenities, the property offers easy access to a list of markets, music venues, and expansive parks such as Holland Park. It is also conveniently situated near top-tier schools like Jack Tizard School and Greenside Primary, with extensive public transport options nearby, providing effortless connectivity to all parts of London.

This beautiful home is the perfect sanctuary for those seeking a blend of historical charm and modern luxury in a lively urban setting.

Council Tax Band D—Hammersmith & Fulham.

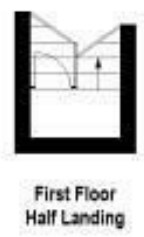
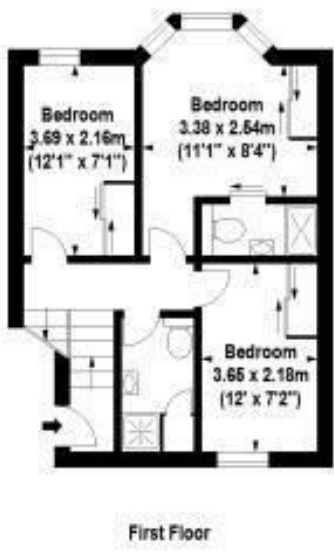
Deposit: One weeks' rent to reserve, with a security deposit of either 5 weeks' rent (for properties under £50,000pa) or 6 weeks' rent (for those over £50,000pa).

Area Map





Floor Plan

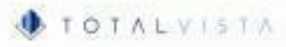


For Identification Purposes Only. Not To Scale. © www.alanaiken.com 2017

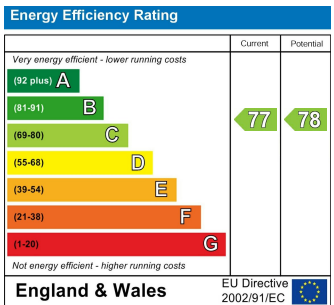


Bloemfontein Road, W12

Approx. Gross Internal Area
82.22 Sq M - 886 Sq Ft



Energy Efficiency Graph



Viewing

Please contact our Lettings SB Office on 0208 740 8740 if you wish to arrange a viewing appointment for this property or require further information.

- BEAUTIFUL VICTORIAN ARCHITECTURE
- SPACIOUS MULTI-LEVEL LIVING
- DARK HARDWOOD FLOORS
- NATURAL LIGHT FROM SKYLIGHTS
- MODERN TOP-FLOOR KITCHEN/RECEPTION
- HIGH-QUALITY FINISHES
- EXCELLENT LOCAL AMENITIES
- SUPERB TRANSPORT CONNECTIVITY
- OFFERED FURNISHED
- AVAILABLE EARLY JULY

For further information contact:
 Lettings SB, 234 Uxbridge Road, Shepherds Bush, London, W12 7JD
 Tel: 0208 740 8740 Email: enquiries@jorgensenturner.com
<https://www.jorgensenturner.com/>

Disclaimer

These particulars, whilst believed to be accurate are set out as a general outline only for guidance and do not constitute any part of an offer or contract. Intending purchasers should not rely on them as statements of representation of fact, but must satisfy themselves by inspection or otherwise as to their accuracy. No person in this firm's employment has the authority to make or give any representation or warranty in respect of the property.

