



jt | JORGENSENTURNER



Tunis Road, Shepherds  
Bush, London

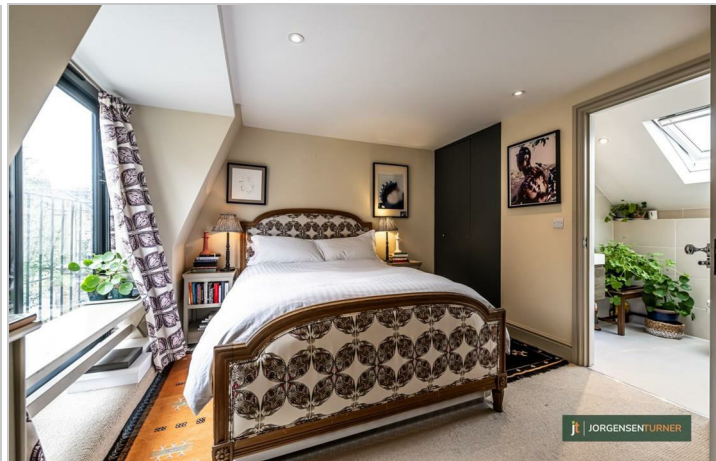
Asking Price £645,000



jt 2 2 1 C jt

# Tunis Road, Shepherds Bush, London

Asking Price £645,000



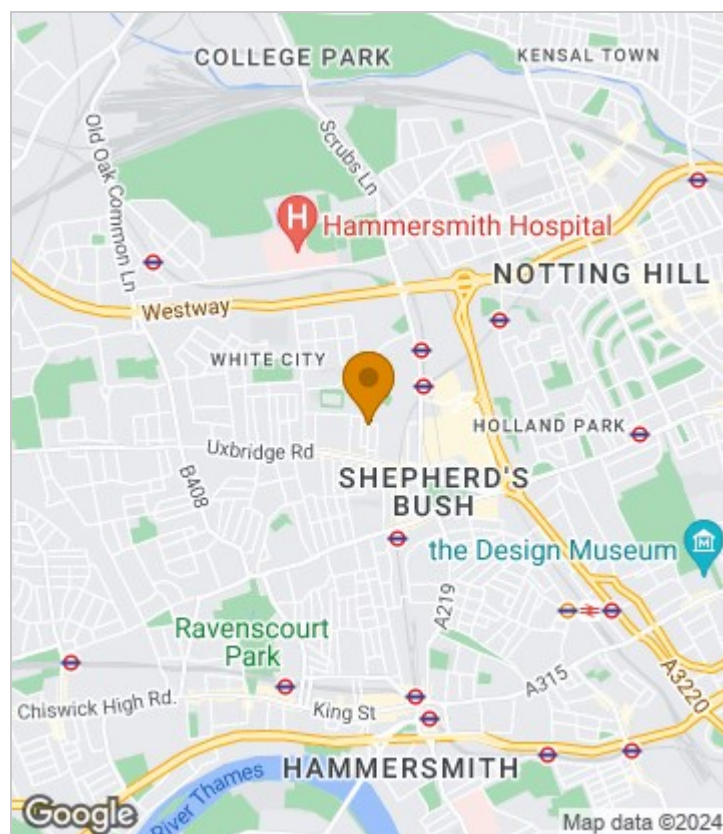
## Summary Description

Tunis Road W12. A wonderful example of a split level two bedroom, two bathroom period apartment. The property is beautifully presented throughout and comprises a spacious, open plan kitchen reception room, double bedroom with fitted wardrobes and a modern fitted bathroom suite on the first floor. Second floor there's a master bedroom with Juliette balcony and an en-suite shower room. The property has a share of freehold and is offered chain free.

The location offers ultra-convenience for all the shops, bars and restaurants on the Uxbridge Road, the Westfield shopping centre, John Lewis and the infamous Soho House members club. The location is extremely well served transport wise with the Hammersmith and City and Central Line tubes, Shepherds Bush Over ground station and numerous bus routes in to Central London. For recreational use the lovely Hammersmith Park is located at the end of the road.

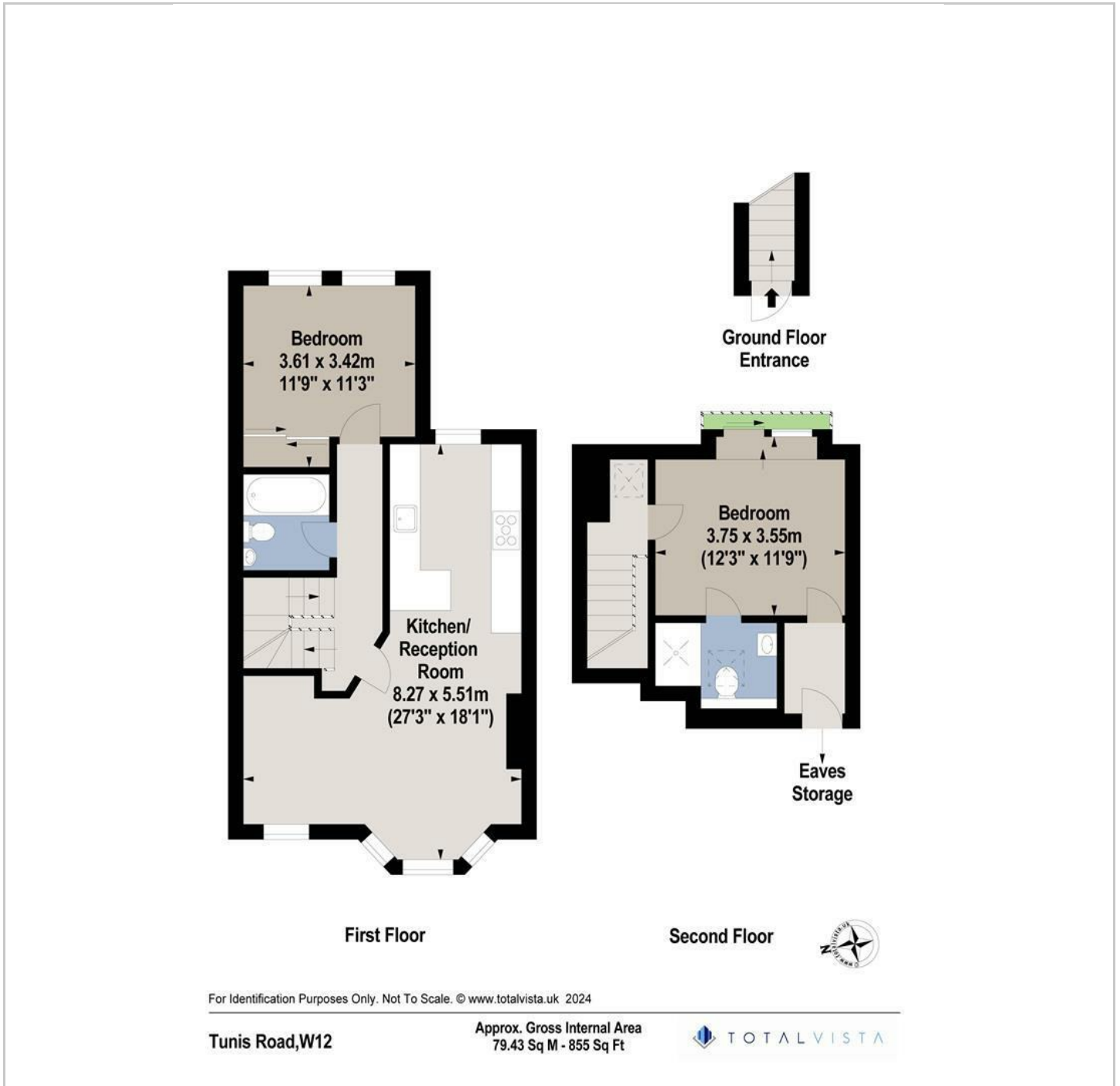
Share of Freehold, SC TBC GR N/A, Band C

## Area Map

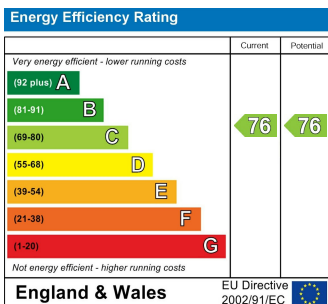




# Floor Plan



## Energy Efficiency Graph



## Viewing

Please contact our Sales SB Office on 0208 740 8740 if you wish to arrange a viewing appointment for this property or require further information.

- SPLIT LEVEL APARTMENT
- TWO BATHROOMS
- CHAIN FREE
- BEAUTIFULLY PRESENTED
- CLOSE TO WESTFIELD CENTRE
- TWO DOUBLE BEDROOMS
- JULIETTE BALCONY
- LONG LEASE
- SHORT WALK TO SOHO HOUSE
- CENTRAL LINE TUBE

For further information contact:

Sales SB, 234 Uxbridge Road, Shepherds Bush, London, W12 7JD

Tel: 0208 740 8740 Email: [enquiries@jorgensenturner.com](mailto:enquiries@jorgensenturner.com)

<https://www.jorgensenturner.com/>

### Disclaimer

These particulars, whilst believed to be accurate are set out as a general outline only for guidance and do not constitute any part of an offer or contract. Intending purchasers should not rely on them as statements of representation of fact, but must satisfy themselves by inspection or otherwise as to their accuracy. No person in this firm's employment has the authority to make or give any representation or warranty in respect of the property.

