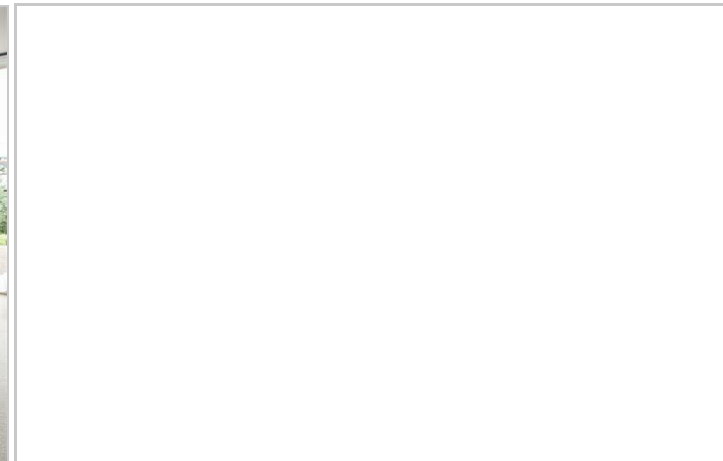




Stronsa Road, London

£2,200 Per Month



Summary Description

****DOGS CONSIDERED**** Jorgensen Turner Estate Agents are delighted to introduce this charming Victorian period conversion located in the vibrant area of Shepherd's Bush. Set over two floors, this 824sqft property expertly combines historical elegance with modern living. On the first floor, a welcoming reception accompanied by a cosy bedroom and a bright kitchen-breakfast space, accompanied by white cabinetry and patterned tiles that celebrate the property's Victorian roots. The layout continues to the upper level, where a spacious master bedroom features unique architectural details, offering a luxurious space of privacy.

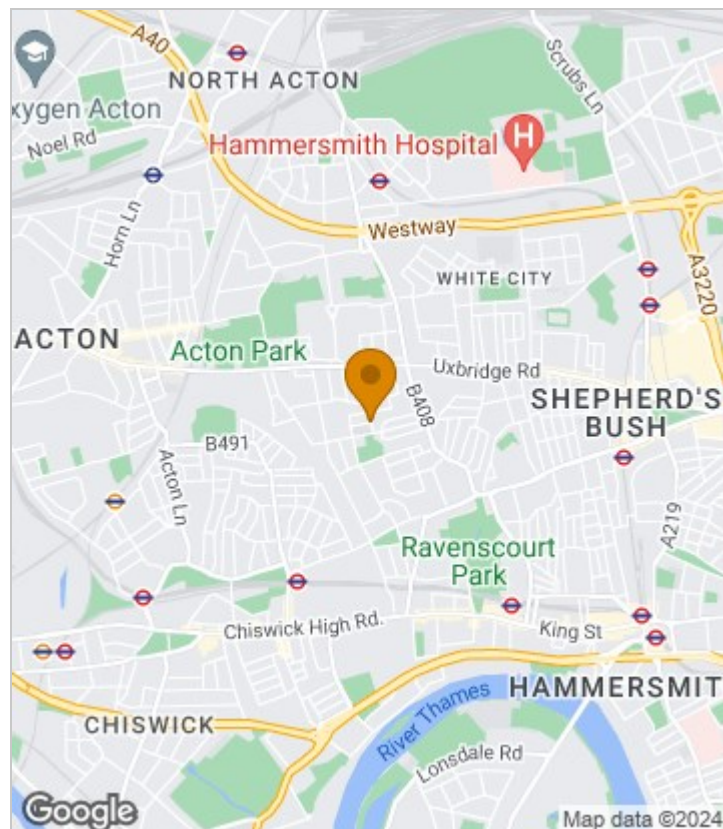
Throughout the home, oak-like hardwood flooring and traditional fireplaces enhance the warmth and character, while the exterior boasts a classic red brick façade with beautifully crafted white accented sash windows and decorative brick arches—further holding the historic charm of the area.

Settled on Stronsa Road, this property is not just a home but a piece of history, perfectly positioned for enjoying the extensive amenities of Shepherd's Bush, including Westfield London and the Shepherd's Bush Empire. Offered on a furnished basis, this apartment is perfect for either single occupants, couples, or sharers. Available from end-May 2024.

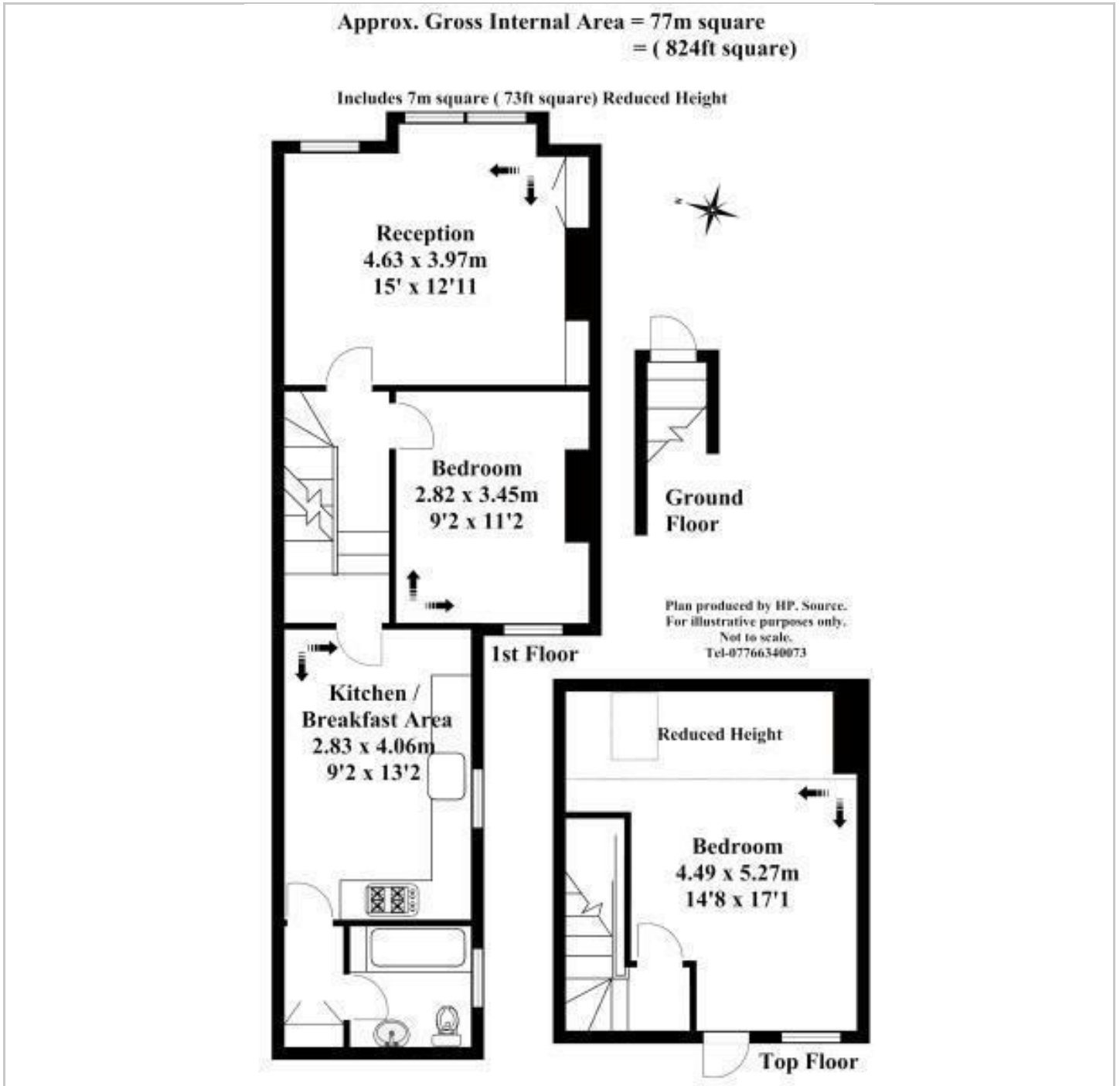
Council Tax Band D—Hammersmith & Fulham.

Deposit: One weeks' rent to reserve, with a security deposit of either 5 weeks' rent (for properties under £50,000pa) or 6 weeks' rent (for those over £50,000pa).

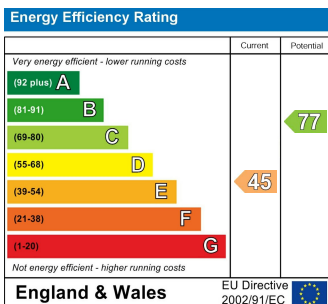
Area Map



Floor Plan



Energy Efficiency Graph



Viewing

Please contact our Lettings SB Office on 0208 740 8740 if you wish to arrange a viewing appointment for this property or require further information.

- VICTORIAN PERIOD PROPERTY
- MODERN KITCHEN WITH BREAKFAST AREA
- OAK-LIKE HARDWOOD FLOORING
- LARGE MASTER BEDROOM
- EXCELLENT ACCESS TO TRANSPORT LINKS
- EXPANSIVE TWO-LEVEL LIVING
- TRADITIONAL FIREPLACES THROUGHOUT
- CHARMING RED BRICK FAÇADE
- CLOSE TO WESTFIELD & SHEPHERD'S BUSH EMPIRE
- AVAILABLE END-MAY

For further information contact:

Lettings SB, 234 Uxbridge Road, Shepherds Bush, London, W12 7JD

Tel: 0208 740 8740 Email: enquiries@jorgensenturner.com

<https://www.jorgensenturner.com/>

Disclaimer

These particulars, whilst believed to be accurate are set out as a general outline only for guidance and do not constitute any part of an offer or contract. Intending purchasers should not rely on them as statements of representation of fact, but must satisfy themselves by inspection or otherwise as to their accuracy. No person in this firm's employment has the authority to make or give any representation or warranty in respect of the property.

