



jorgensenturner  
estate agents



Tunis Road Shepherds  
Bush, London, W12 7EZ

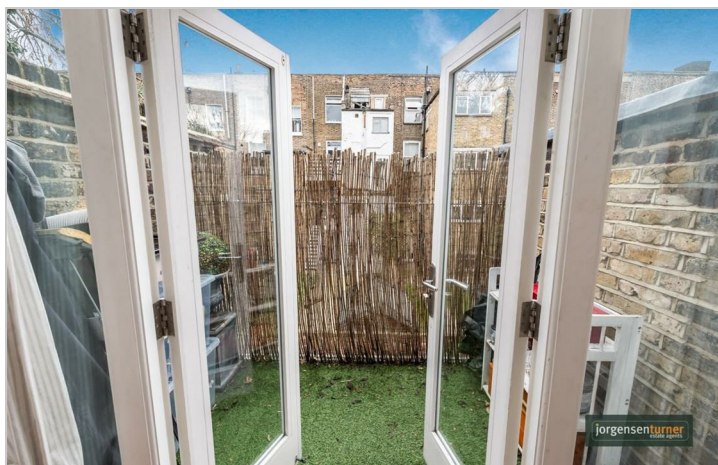
Asking Price £400,000



1 1 1 B

# Tunis Road Shepherds Bush, London, W12 7EZ

Asking Price £400,000



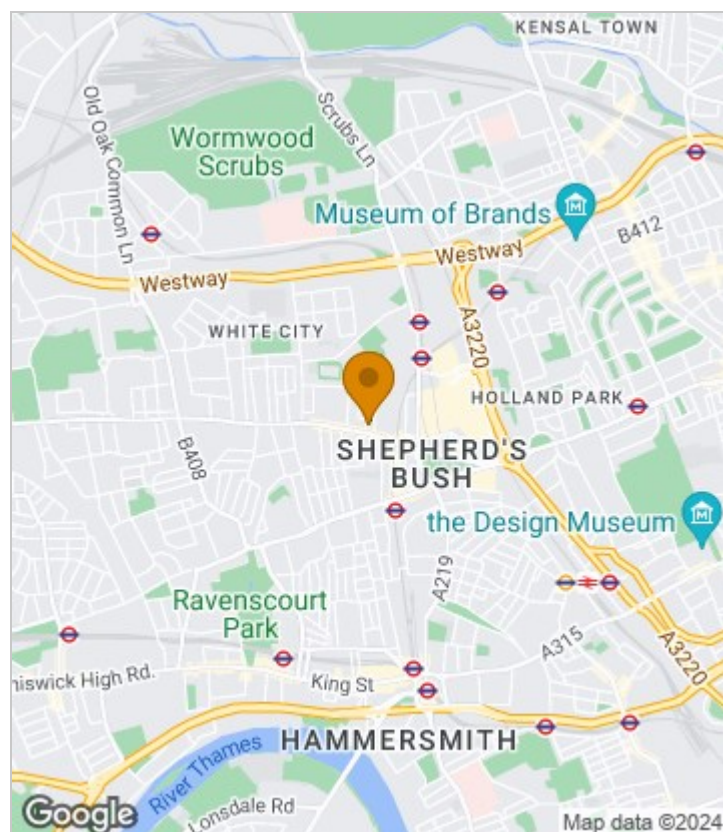
## Summary Description

Tunis Road W12. A lovely first floor apartment in the centre of Shepherd's Bush. Situated on the first floor of this attractive period building, the property offers a spacious reception room with wood flooring with doors leading out on to a private balcony, a modern fitted kitchen, a modern bathroom and a double bedroom with spacious fitted wardrobes. The property further benefits from a share of freehold and is offered chain free.

Tunis Road is a prime residential road located in the heart of Shepherd's Bush. The location offers convenience for all the shops, bars and restaurants on the Uxbridge Road, the Westfield shopping centre, John Lewis and the infamous Soho House members club. The location is extremely well served transport wise with the Hammersmith and City and Central Line tubes, Shepherds Bush Over ground station and numerous bus routes in to Central London. For recreational use the lovely Hammersmith Park is only a short walk away.

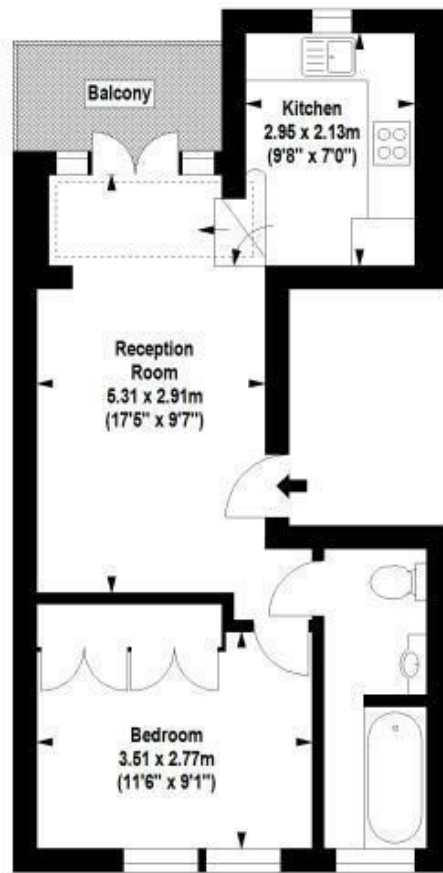
Lease 107 yrs . Service Charges £1,848pa, Ground Rent £250pa

## Area Map





# Floor Plan



First Floor



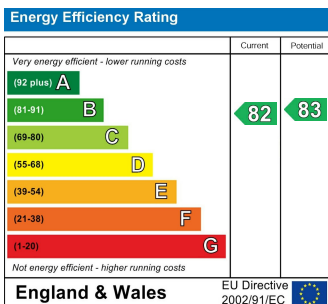
For Identification Purposes Only. Not To Scale. © www.totalvista.uk 2018

Tunis Road, W12

Approx. Gross Internal Area  
38.46 Sq M - 414 Sq Ft



## Energy Efficiency Graph



## Viewing

Please contact our Sales SB Office on 0208 740 8740 if you wish to arrange a viewing appointment for this property or require further information.

- FIRST FLOOR FLAT
- PRIVATE BALCONY
- GOOD CONDITION THROUGHOUT
- CENTRAL LOCATION
- HAMMERSMITH AND CITY LINE
- ONE BEDROOM
- ATTRACTIVE PERIOD CONVERSION
- SHARE OF FREEHOLD
- CENTRAL LINE TUBE
- CLOSE TO WESTFIELD WHITE CITY

For further information contact:

Sales SB, 234 Uxbridge Road, Shepherds Bush, London, W12 7JD

Tel: 0208 740 8740 Email: [enquiries@jorgensenturner.com](mailto:enquiries@jorgensenturner.com)

<https://www.jorgensenturner.com/>

### Disclaimer

These particulars, whilst believed to be accurate are set out as a general outline only for guidance and do not constitute any part of an offer or contract. Intending purchasers should not rely on them as statements of representation of fact, but must satisfy themselves by inspection or otherwise as to their accuracy. No person in this firm's employment has the authority to make or give any representation or warranty in respect of the property.

