



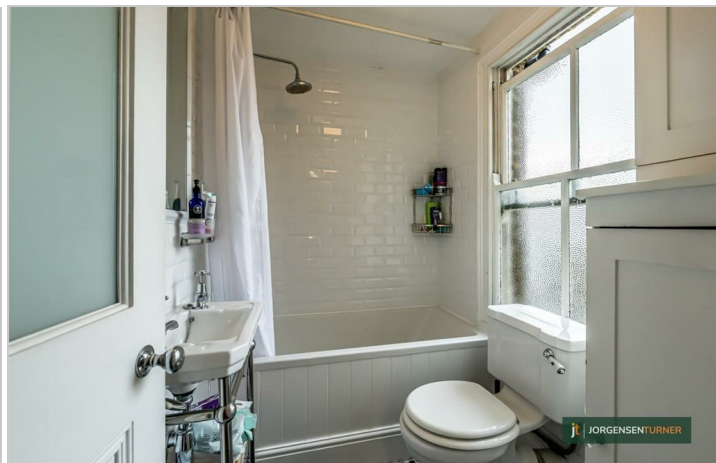
Loftus Road, Shepherds  
Bush

Asking Price £345,000



# Loftus Road, Shepherds Bush

Asking Price £345,000



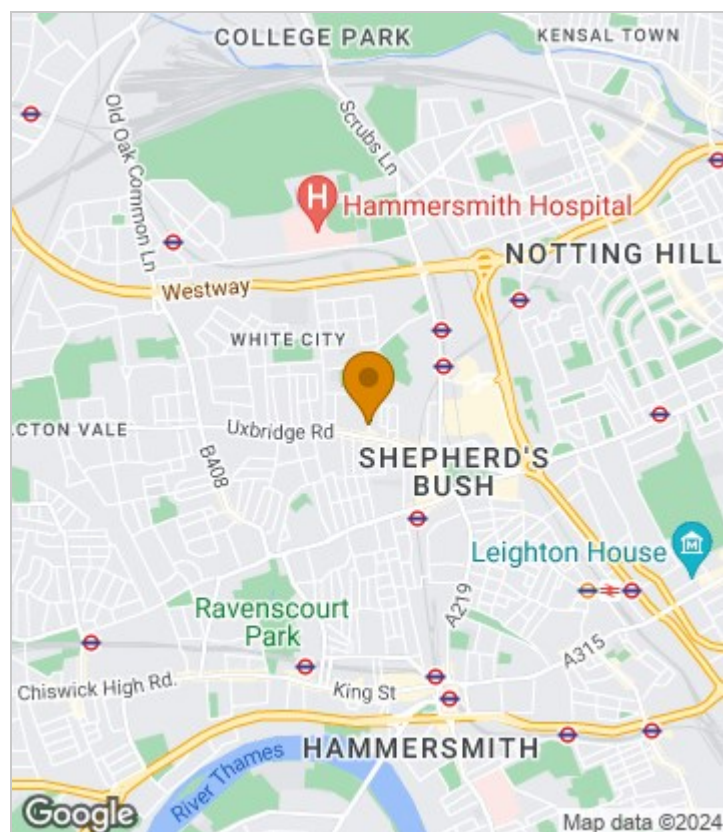
## Summary Description

Loftus Road W12. A centrally located second floor flat in this attractive period building. Internally the property is offered in excellent condition and comprises: reception room with wood flooring and great views to the rear of the property, fully fitted kitchen with fitted appliances, one double bedroom and modern bathroom. The property further benefits from a long lease. To arrange a viewing please call Jorgensen Turner Shepherd's Bush office on 0208 740 8740.

The location is well served by a number of excellent independent shops, coffee shops, bars and pubs (Princess Victoria) along the Uxbridge Road. Transport wise the property is well served by the Central Line (White City & Shepherds Bush), the Circle Line & Hammersmith & City Line (Shepherds Bush Market and Wood Lane) and London Overground (Shepherds Bush). The Westfield shopping centre is also only a short walk away from the property.

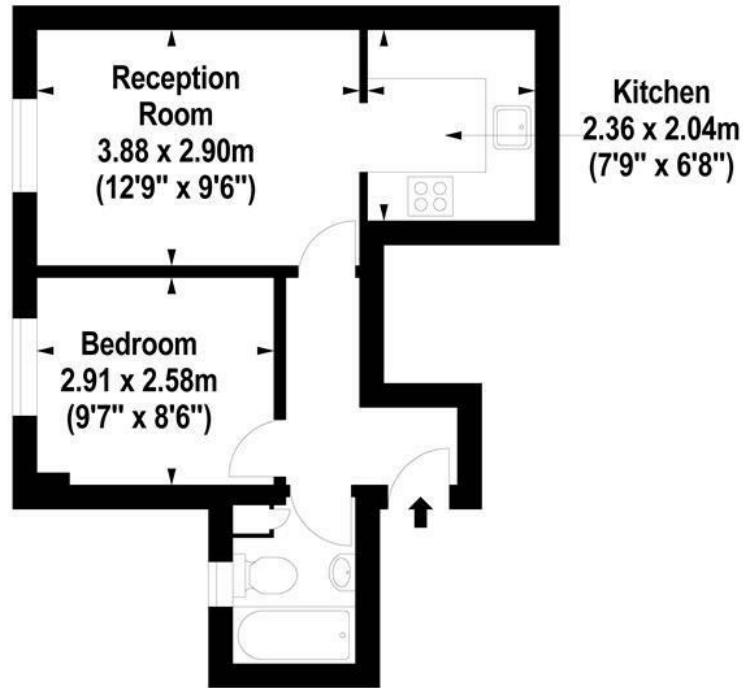
Lease 115yrs, Service Charge £1,370pa, GR £250pa

## Area Map





# Floor Plan



Second Floor

For Identification Purposes Only. Not To Scale. © www.totalvista.uk 2023

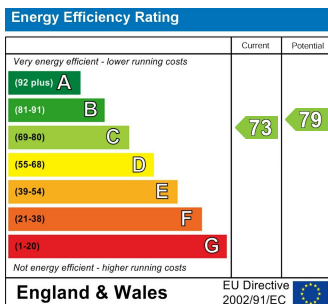


Loftus Road, W12

Approx. Gross Internal Area  
31.59 Sq M - 340 Sq Ft



## Energy Efficiency Graph



## Viewing

Please contact our Sales SB Office on 0208 740 8740 if you wish to arrange a viewing appointment for this property or require further information.

- SECOND FLOOR FLAT
- IMMACULATE CONDITION
- CENTRAL LOCATION
- MOMENTS FROM AMENITIES
- CENTRAL LINE TUBE
- ONE DOUBLE BEDROOM
- LONG LEASE
- ATTRACTIVE PERIOD BUILDING
- CLOSE TO WESTFIELD WHITE CITY
- HAMMERSMITH AND CITY LINE

For further information contact:

Sales SB, 234 Uxbridge Road, Shepherds Bush, London, W12 7JD

Tel: 0208 740 8740 Email: [enquiries@jorgensenturner.com](mailto:enquiries@jorgensenturner.com)

<https://www.jorgensenturner.com/>

### Disclaimer

These particulars, whilst believed to be accurate are set out as a general outline only for guidance and do not constitute any part of an offer or contract. Intending purchasers should not rely on them as statements of representation of fact, but must satisfy themselves by inspection or otherwise as to their accuracy. No person in this firm's employment has the authority to make or give any representation or warranty in respect of the property.

